



The battery compartments which are available as an option make this series of desktop enclosures (available on request) ideal for a very wide range of uses, including as a mobile hand-held enclosure. The plastic or aluminium plug-in front and rear panels allow low-cost processing or printing.

Additional slot-in grooves mean that mounting plates and PCBs can be slotted in on different levels parallel to the front panel.

The wraparound enclosure collar on the front of the enclosure provides optimal protection of the fitted operating elements against damage or unintentional operation.



Enclosure material: ABS.

For technical data  
see pages 646-650.

Colour: Black, similar to  
RAL 9005;  
special colours  
on request.

Ingress protection: IP 40/DIN EN 60529

Accessories (additional charge):

BO...FAE/RAE: Front or rear panel in  
aluminium anodized  
BO...FKS/RKS: Front or rear panel in  
ABS; black, similar to  
RAL 9005

Rubber feet

Scope of delivery:

Lid, base, screws;  
BE also with battery contacts, battery  
compartment lid, sticker with battery  
symbols.

## Models BOBOX

Enclosures		Encl. with battery comp.		External dimensions		
Model	Order no.	Model	Order no.	L	W	H
BO 706*	09706000	BO 706 BE*	09740000	104	60	30
BO 707*	09707000	BO 707 BE*	09740200	160	90	30
BO 708*	09708000	BO 708 BE*	09740300	160	90	45
BO 709*	09709000	BO 709 BE*	09740400	160	90	60
BO 710*	09710000	—	—	215	140	50

\* supplied as standard with moulded-on rear wall

• available on request

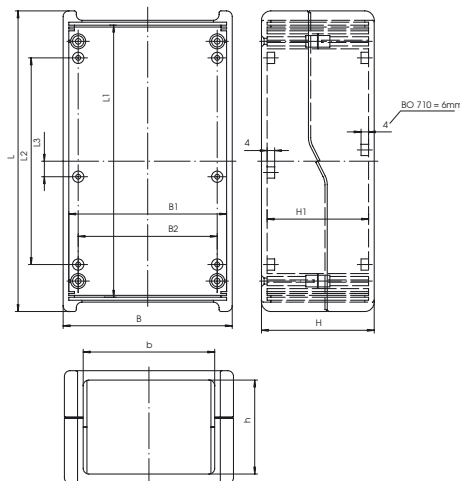
Please order front and rear panels separately.

BO 706 BE:

with separately accessible battery  
compartment to hold two mignon  
batteries or one 9 volt battery.

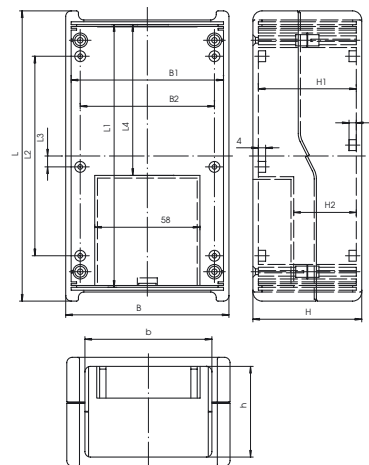
BO 707 BE - BO 709 BE:

with separately accessible battery  
compartment to hold four mignon  
batteries or two 9 volt batteries.



Z-2701788

## BE version



Z-2701789

## Table of dimensions

Model	L	B	H	L1	B1	H1	L2	L3	B2	h	b	L4	H2
BO 706 (BE)	104.0	60.0	30.0	94.0	54.0	24.0	84.0	10.0	44.0	20.0	45.0	63.0	4.0
BO 707 (BE)	160.0	90.0	30.0	143.0	84.0	24.0	110.0	6.0	74.0	20.0	70.0	83.0	4.0
BO 708 (BE)	160.0	90.0	45.0	142.8	84.0	39.0	110.0	6.0	74.0	35.0	70.0	83.0	19.0
BO 709 (BE)	160.0	90.0	60.0	143.0	84.0	54.0	110.0	6.0	74.0	50.0	70.0	83.0	34.0
BO 710	215.0	140.0	50.0	177.0	111.0	44.0	150.0	0.0	90.0	36.0	112.0	—	—

## Accessories

Front and  
rear panels for

Aluminium front and rear panels		Plastic front and rear panels	
Model	Order no.	Model	Order no.
BO 706 (BE)	BO 706 FAE*	—	—
BO 707 (BE)	BO 707 FAE/RAE*	BO 707 FKS/RKS*	46001400
BO 708 (BE)	BO 708 FAE/RAE*	BO 708 FKS/RKS*	46001500
BO 709 (BE)	BO 709 FAE/RAE*	BO 709 FKS/RKS*	46001600
BO 710	BO 710 FAE/RAE*	BO 710 FKS/RKS*	46001800
• available on request			
Rubber feet (1 pc)		59006830	