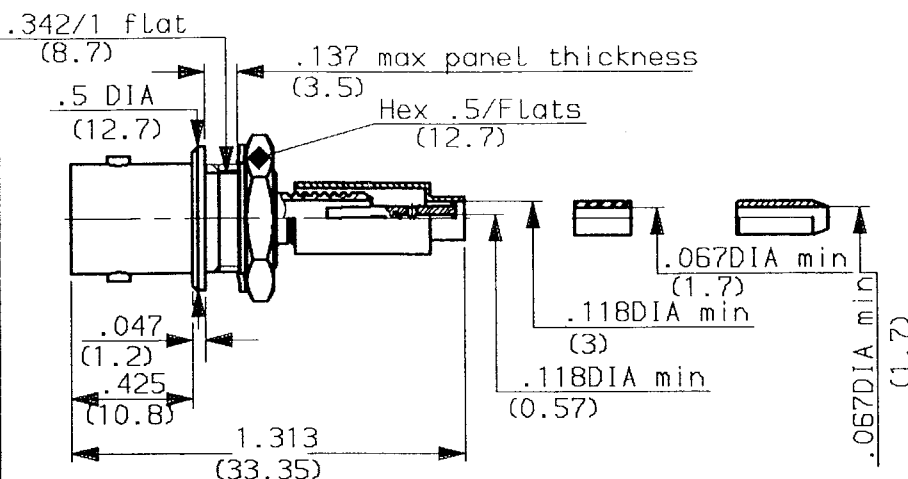


**STRAIGHT BULKHEAD JACK-CRIMP TYPE
 CABLE 2.6/50**

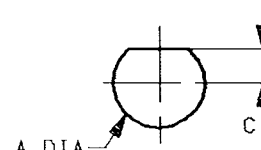
SERIES:

BNC

1 / 2



MOUNTING HOLE



| | MM | | INCH | |
|---|------|------|------|------|
| | mini | maxi | mini | maxi |
| A | 9.65 | 9.75 | .380 | .383 |
| C | 3.96 | 4.04 | .156 | .159 |

weight oz (g)

CABLES : RG174 KX3

CHARACTERISTICS

| | | |
|---------------------------------|----------|----------------------------------|
| NOMINAL IMPEDANCE | 50 | Ω |
| FREQUENCY RANGE | 0-4 | GHz |
| TEMPERATURE RATING | -65/+165 | °C |
| VSWR | AD | Max |
| RF INSERTION LOSS | AD | √F dB Maxi |
| VOLTAGE RATING | 335 | Vrms Maxi |
| DIELECTRIC WITHSTANDING VOLTAGE | 1000 | Vrms mini |
| INSULATION RESISTANCE | 5000 | MΩ mini |
| HERMETIC SEAL | NA | cc/s - Atm.cm ³ /s |
| LEAKAGE (pressurized only) | NA | psi - MPa |

STANDARDISATION

 CECC 22120 /BNC
 CEI 169-08/BNC
 MIL STD348-301/BNC

CABLE RETENTION

 8.8 Lb mini
 40 N

CENTER CONTACT RETENTION

 Axial force - mating end 5.984 Lb mini
 27.2 N

 Axial force - opposite end 5.984 Lb mini
 27.2 N

 Torque (Min) NA
 - Inch.oz
 - cm.N

RECOMMENDED TORQUES

| | | |
|-----------|--------|-----------------|
| Mating | NA | Inch.Lb cm.N |
| Panel nut | 22.125 | Inch.Lb cm.N |
| Clamp nut | NA | Inch.Lb cm.N |

CONSTRUCTION

| CONNECTOR PARTS | MATERIALS | FINISH |
|-----------------|------------------|--------|
| BODY | BRASS | NICKEL |
| OUTER CONTACT | BRASS | NICKEL |
| CENTER CONTACT | BERYLLIUM COPPER | GOLD |
| INSULATORS | PTFE | - |
| - | - | - |
| - | - | - |
| - | - | - |
| - | - | - |
| - | - | - |

| ISSUE | REVISION No | DESCRIPTION | BY | DATE |
|-------|-------------|------------------------------|--------|----------|
| 9737 | 9506.015 | braid clamp PTFE → Polyamide | Guerin | 17.09.97 |

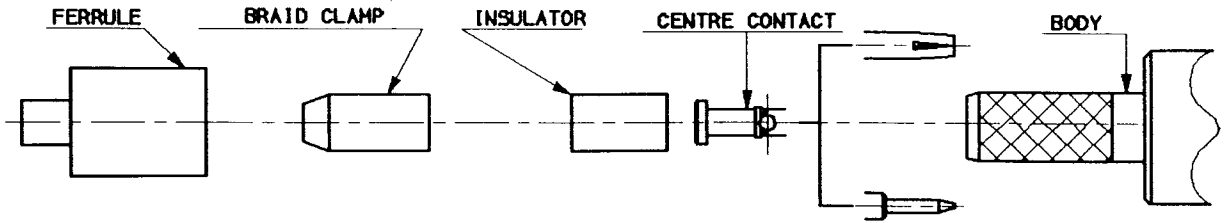
Initiated on 31-MAR-92

The information given here is subject to change without notice. Design changes may be in order to improve the product.



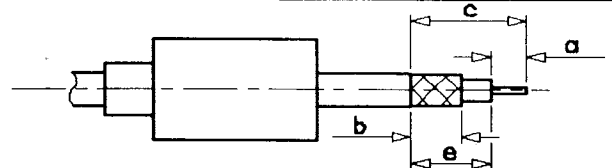
Superseded on

STRAIGHT BULKHEAD JACK-CRIMP TYPE
CABLE 2.6/50



①

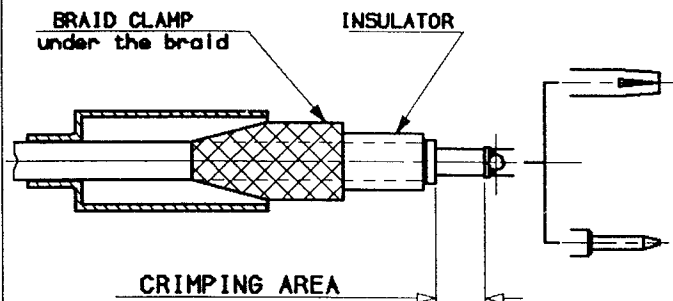
- 1-1 Slide onto the cable the ferrule
- 1-2 Strip the cable .
- 1-3 Fan the braid .



| Stripping | a | b | c | d | e |
|-----------|------|------|------|---|------|
| Inch | .157 | .393 | .728 | - | .57 |
| mm | 4 | 10 | 18.5 | - | 14.5 |

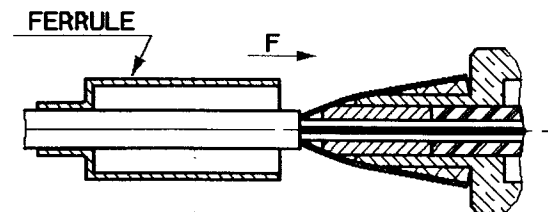
②

- 2-1 Slide the braid clamp and insulator between the dielectric and the braid .
- 2-2 Slide on the centre contact until it bottoms against cable dielectric .
- 2-3 Crimp centre contact , crimping tool R 282 223 000 (Hex. .068) or crimping tool M22520/5-01 + dies M22520/5-11



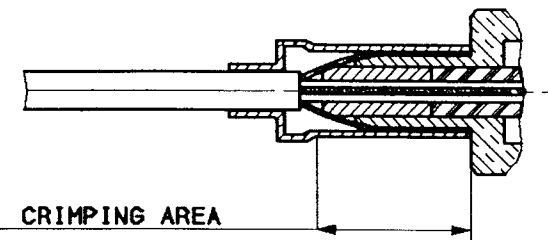
③

- 3-1 Slide cable into the body until bottoms against insulator .
- 3-2 Slide ferrule over the braid (in direction F)



④

- 4-1 Crimp the ferrule with crimping tool R 282 223 000 (Hex. .213) or Crimping tool M22520/5-01 + dies M22520/5-11
- 4-2 Cut the excess of braid .



| ISSUE | REVISION No | DESCRIPTION | BY | DATE |
|-------|-------------|-------------|----|------|
| . | . | . | . | . |
| . | . | . | . | . |
| . | . | . | . | . |

Initiated on 31-MAR-92
Superseded on _____

The information given here is subject to change without notice. Design changes may be in order to improve the product.

