

DESIGN/PROCESS CHANGE NOTIFICATION

This is to inform you that a change is being made to the following products.

This is a minor change that has no impact on product quality, reliability, electrical or mechanical performance. Affected products will remain fully compliant to all published specifications. Notification is being made for informational purposes only and there is no approval required. Products incorporating this change may be shipped interchangeably with existing unchanged products.

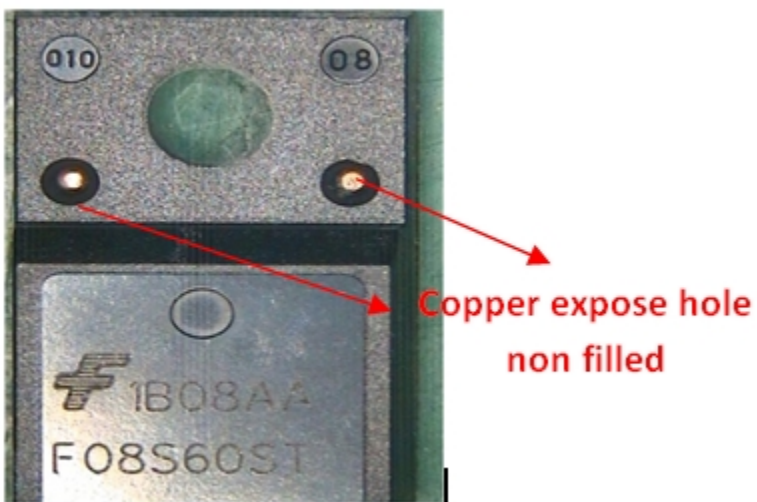
Please contact your local Customer Quality Engineer if you have any questions regarding this notification. Alternatively, you may send an email request for information to PCNSupport@fairchildsemi.com.

Implementation of change:

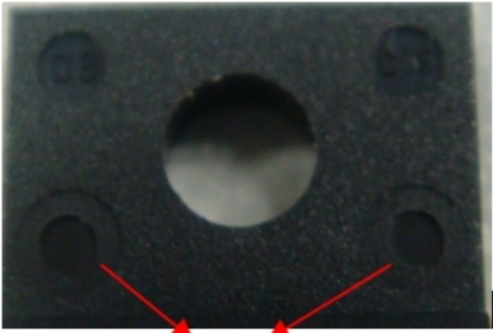
Expected First Shipment Date for Changed Product : Aug. 26, 2012

Expected First Date Code of Changed Product : 1236

Description of Change (From) : Non potting type, copper exposed hole.



Description of Change (To) : Retract molding, EMC filled hole.



hole filled

Reason for Change:

1. Molding process standardization
2. Productivity improvement

Affected Product(s):

FCPF11N60	FCPF11N60F	FCPF11N60_G
FCPF11N65	FCPF11N65_G	FCPF16N60
FCPF20N60	FCPF20N60FS	FCPF20N60S
FCPF7N60	FCPF7N60YDTU	FDPF14N30
FDPF15N65	FDPF16N50	FDPF18N50
FDPF20N50	FDPF39N20	FDPF51N25
FDPF51N25RDTU	FDPF51N25YDTU	FDPF55N06
FDPF7N50U_G	FFPF04S60STU	FFPF08H60STU
FFPF08S60SNTU	FFPF08S60STU	FFPF10F150STU
FFPF10UA60ST	FFPF10UP20STU	FFPF10UP30STU
FFPF10UP60STU	FFPF12UP20DNTU	FFPF15S60STU
FFPF20UA60DN	FFPF20UP20DNTU	FFPF20UP30DNTU
FFPF20UP40S	FFPF20UP60DNTU	FFPF20UP60DNTU_G
FFPF30UA60S	FFPF30UP20STU	FFPF60SA60DSTU
FGPF50N30TTU	FGPF50N33BTTU	FQPF10N20C
FQPF10N50CF	FQPF11N40C	FQPF11N50CF
FQPF11P06	FQPF13N06L	FQPF13N50CF
FQPF15P12	FQPF16N15	FQPF16N25C
FQPF19N10	FQPF19N20	FQPF19N20C
FQPF20N06	FQPF20N06L	FQPF22N30
FQPF22P10	FQPF27N25	FQPF27P06
FQPF2N60C	FQPF2N70	FQPF2N80
FQPF30N06L	FQPF32N20C	FQPF33N10
FQPF33N10L	FQPF3N25	FQPF3N80C
FQPF45N15V2	FQPF47P06	FQPF47P06YDTU
FQPF4N90C	FQPF5N40	FQPF5N50CYDTU
FQPF5N60C	FQPF5N60C_F105	FQPF5N90
FQPF5P20	FQPF5P20RDTU	FQPF630
FQPF65N06	FQPF6N80C	FQPF6N80C_G
FQPF6N90C	FQPF70N10	FQPF7N60
FQPF7N65C	FQPF7N65CYDTU	FQPF7N80C
FQPF7N80C_G	FQPF7P20	FQPF85N06
FQPF8N60CYDTU	FQPF8N80C	FQPF8N80CYDTU
FQPF8N90C	FQPF9N25C	FQPF9N25CYDTU
FQPF9N50CF	FQPF9P25	IRLS640A
ISL9R1560PF2	ISL9R460PF2	ISL9R860PF2
SGS10N60RUFDTU	SGS23N60UFDTU	