

TEST/CHARACTERISTICS	STANDARD REFERENCE	VALUES/REMARKS
----------------------	--------------------	----------------

### ELECTRICAL CHARACTERISTICS

Impedance		75 Ω
Frequency range		DC-1 GHz
V.S.W.R. max <i>Straight models cable group : 2.6/75, 5/75, 6/75, 8/75, 10 + 11/75</i>		1.30
<i>Right angle models</i> 2.6/75, 6/75		1.35
Insertion loss <i>straight connector</i> <i>right-angle connector</i>		0.2 dB max at 1 GHz 0.3 dB max at 1 GHz
RF Leakage		- 55 dB min from 2 to 3 GHz
Insulation resistance		5000 MΩ min
Contact resistance <i>center contact</i> <i>outer contact</i>	MIL	1.5 mΩ 0.2 mΩ
Working voltage in VRMS <i>at sea level</i> <i>(at 21 000m)</i>		500 125
Dielectric withstanding voltage in VRMS <i>at sea level</i> <i>(at 21 000m)</i>		1500 375
RF testing voltage in VRMS <i>sea level (5 MHz)</i>		1000

### MECHANICAL CHARACTERISTICS

Durability		500 matings
Force to engage and disengage <i>axial</i> <i>torque</i>		13.6 N max 28.6 Ncm
Coupling nut retention force	MIL	445 N
Cable retention force <i>cable 2.6/75, 5/75, 6/75, 8/75, 10 + 11/75</i>		340 N
Center contact retention force		

### ENVIRONMENTAL CHARACTERISTICS

Temperature range <i>flexible cables</i>	MIL	- 65°C + 165°C
Thermo cycling test		MIL STD 202, method 107, condition B
Thermal shock		
High temperature endurance		MIL STD 202, method 108
Corrosion salt spray		MIL STD 202, method 101, condition B
Vibration		MIL STD 202, method 204, condition B
Shock		MIL STD 202, method 213, condition G
Moisture resistance		MIL STD 202, method 106
Hermetic test		MIL STD 202, method 112, condition C vacuum 10 <sup>-6</sup> Hgmm (Torr) leakage rate < 10 <sup>-6</sup> atm/cm <sup>3</sup> /s
Barometric pressure		Pressure test : 3.5 bars; duration : 2 mn; temperature : 15° C to 25 °C

### MATERIALS

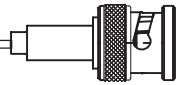
Bodies		Brass
Center contact <i>male</i> <i>female</i>		Brass Bronze or heat treated beryllium following QQ-C-530
Nut		Brass
Insulator		PTFE
Gasket		Silicon rubber

### PLATINGS

Bodies		Nickel
Center contacts		Gold

Standard packaging : unit

All dimensions are given in mm.



### RIGHT ANGLE PLUGS CLAMP TYPE FOR FLEXIBLE CABLES

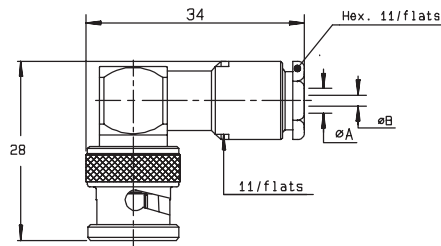


Fig. 1

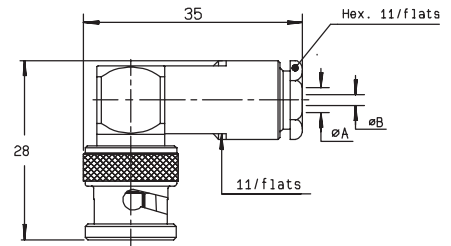
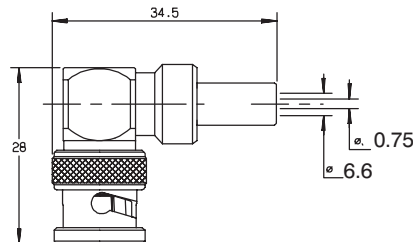


Fig. 2

cable	part number	fig.	dimensions		captive center contact	assembly
			A	B		
2.6 /75/ S	R142 154 000	1	3.1	0.6	yes	M02
6 /75/ S	R142 157 000	2	6.6	0.75	yes	M01

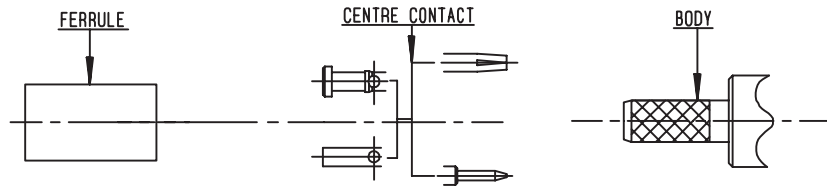
### RIGHT ANGLE PLUGS FULL CRIMP TYPE FOR FLEXIBLE CABLES



cable	part number	captive center contact	assembly
6 /75/ S	R142 184 000	yes	M07

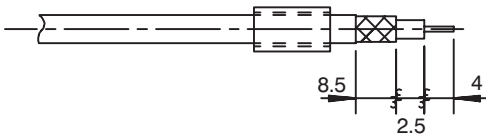
For others types of cables (75Ω, 93Ω or BT cables), please see "additional connectors" on page 36-37.

### M 07



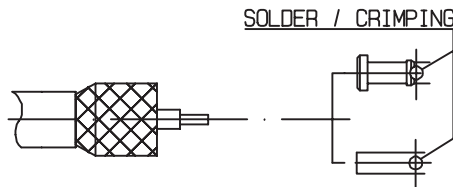
P/N	HEX. DIM. H	FERRULE		CENTER CONTACT	
		DIES INCLUDED	MIL STANDARD R282 293 000 (M22520/5-01)+DIES	DIES INCLUDED	MIL STANDARD R282 293 000 (M22520/5-01)+DIES
R141 082 000 R141 083 000 R141 182 000 R141 183 000	1,73-5,4	R282 223 000	R282 235 011 (M22520/5-11)	R282 223 000	R282 235 011 (M22520/5-11)
R142 184 000	1,73-6,48		R282 235 013 (M22520/5-13)		R282 235 013 (M22520/5-13)
R141 220 000 R141 237 000			R282 235 011 (M22520/5-11)		R282 235 011 (M22520/5-11)
R142 242 000			R282 235 013 (M22520/5-13)		R282 235 013 (M22520/5-13)
R141 292 000	1,73-5,4		R282 235 011 (M22520/5-11)		R282 235 011 (M22520/5-11)
R142 295 000	1,79-10,54				R282 231 000
R141 308 000 R141 332 500	1,73-5,4		R282 235 013 (M22520/5-13)		R282 235 011 (M22520/5-11)
R142 085 000	1,73-6,48				R282 235 013 (M22520/5-13)
R142 095 000					R282 235 011 (M22520/5-11)
R142 083 000	5.4		R282 223 000		R282 235 011 (M22520/5-11)

1



- 1.1 Slide onto the cable the ferrule
- 1.2 Strip the cable .

2



- 2.1 Fan the braid.
- 2.2 Slide on centre contact until it bottoms against cable dielectrique .
- 2.3 Crimp or solder the centre contact .