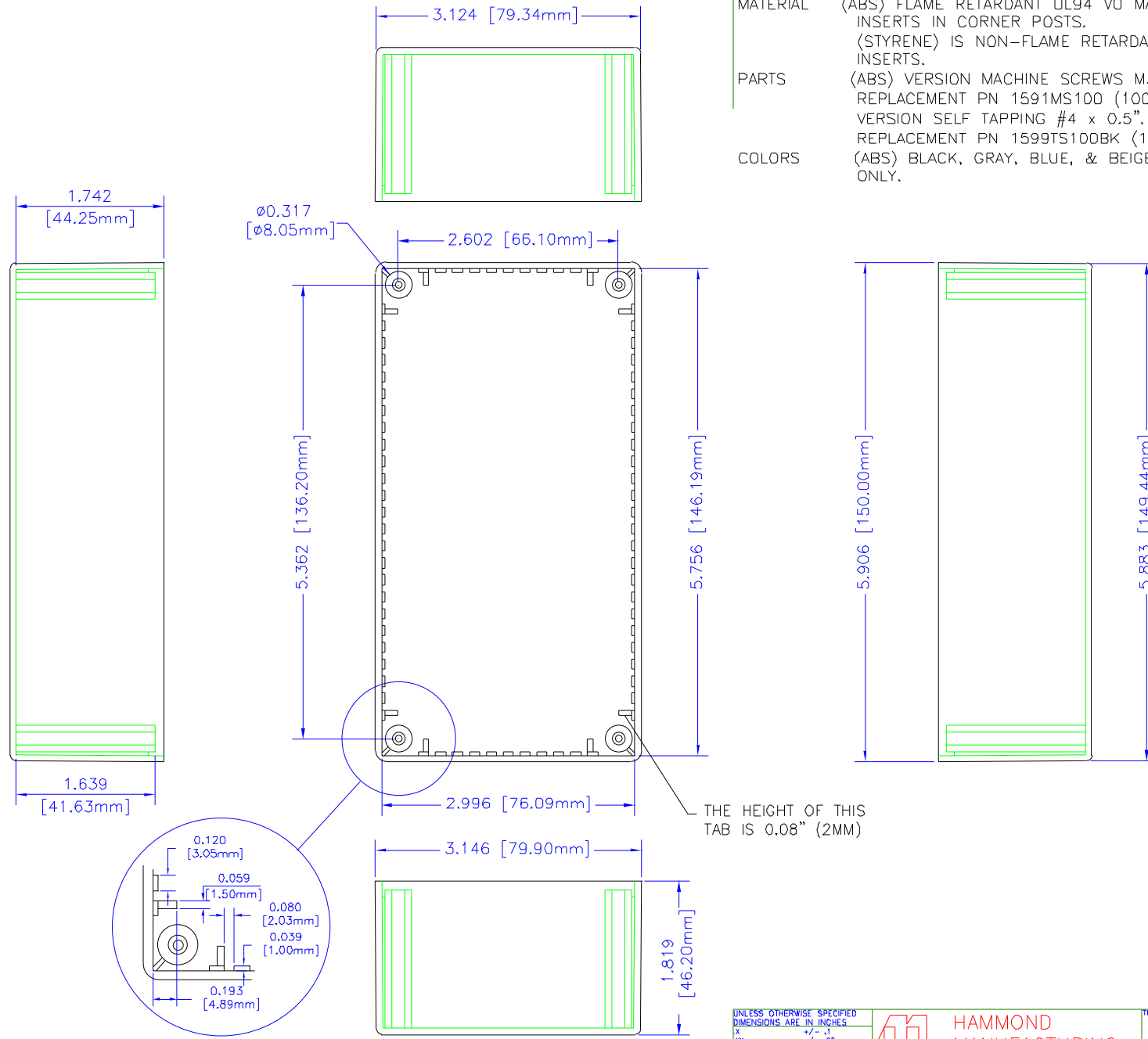


## NOTES

MATERIAL (ABS) FLAME RETARDANT UL94 V0 MATERIAL WITH BRASS INSERTS IN CORNER POSTS.  
(STYRENE) IS NON-FLAME RETARDANT WITHOUT BRASS INSERTS.

PARTS (ABS) VERSION MACHINE SCREWS M3-0.5 x 10mm.  
REPLACEMENT PN 1591MS100 (100 / BAG). (STYRENE) VERSION SELF TAPPING #4 x 0.5".  
REPLACEMENT PN 1599TS100BK (100 / BAG).

COLORS (ABS) BLACK, GRAY, BLUE, & BEIGE, (STYRENE) BLACK ONLY.



THE HEIGHT OF THIS TAB IS 0.08" (2MM)

BOX

UNLESS OTHERWISE SPECIFIED  
DIMENSIONS ARE IN INCHES.  
X +/- .1  
XX +/- .06  
XXX +/- .015  
GIPS +/- .005  
ANGLES +/- .5 DEG.  
**NOTICE**  
HAMMOND MANUFACTURING PROPRIETARY RIGHTS TO THE INFORMATION IN THIS DRAWING. IT IS INTENDED TO BE USED AS A REFERENCE FOR ENGINEERING INFORMATION ONLY. THIS INFORMATION MAY NOT BE USED TO MANUFACTURE PRODUCT WITHOUT WRITTEN PERMISSION FROM HAMMOND MANUFACTURING.



**HAMMOND  
MANUFACTURING**

WEB: [WWW.HAMMONDMFG.COM](http://WWW.HAMMONDMFG.COM)

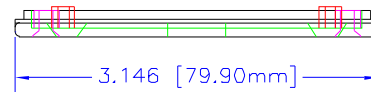
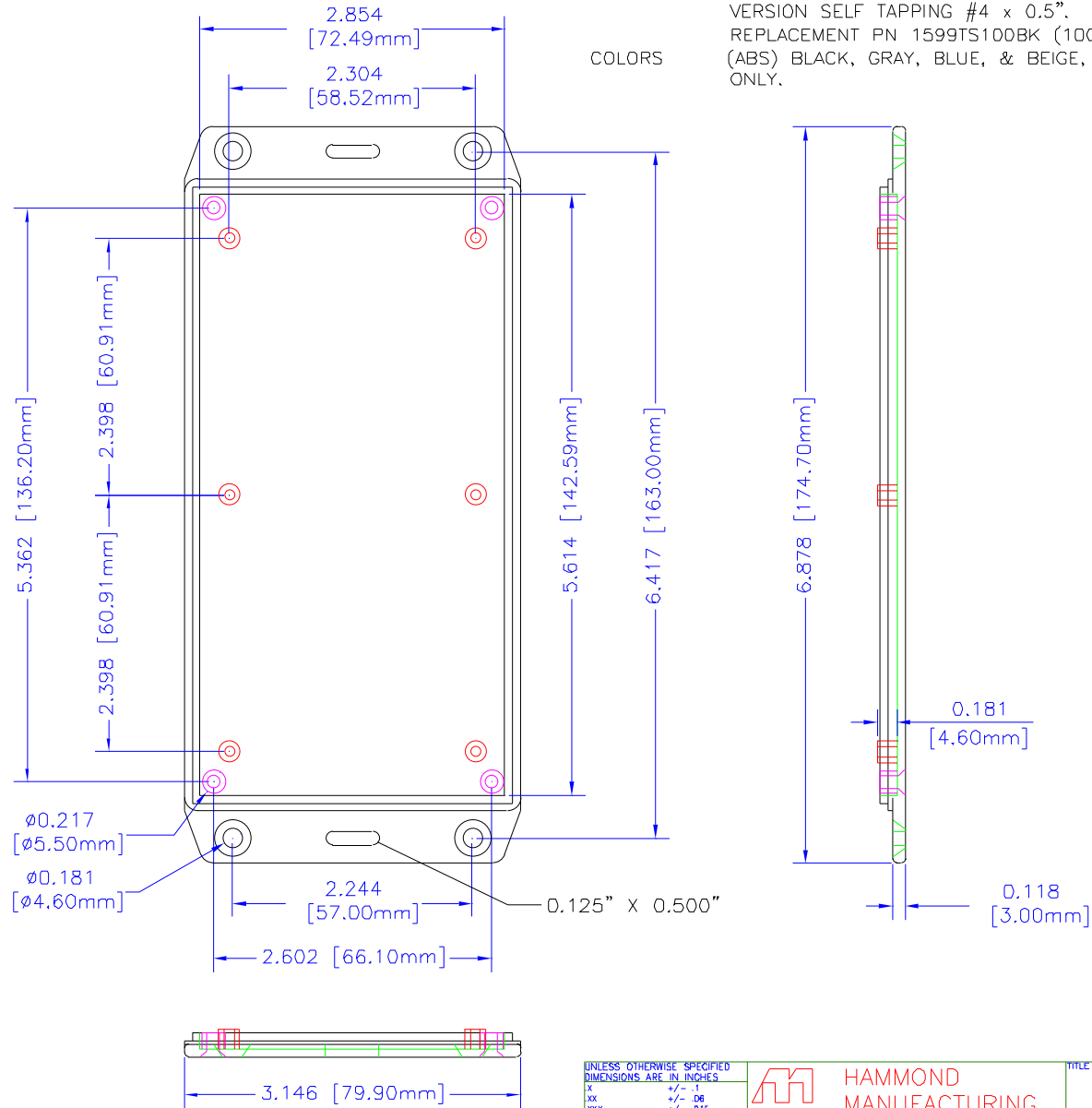
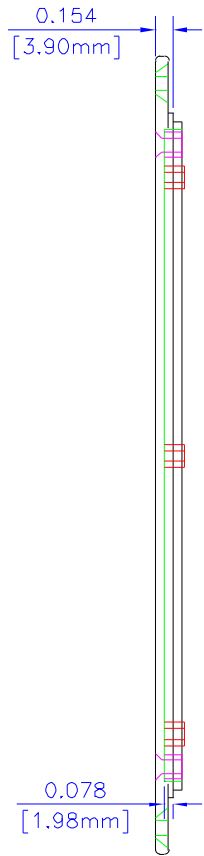
|             |         |  |          |
|-------------|---------|--|----------|
| TITLE       |         | HAMMOND 1591 SERIES<br>PLASTIC ENCLOSURE |          |
| DRAWN BY    | MJM     | DATE                                     | 01/23/01 |
| SCALE       |         | PAGE                                     | 1 OF 2   |
| PART NUMBER | 1591DFL |  |          |

# NOTES

**MATERIAL** (ABS) FLAME RETARDANT UL94 VO MATERIAL WITH BRASS INSERTS IN CORNER POSTS.  
(STYRENE) IS NON-FLAME RETARDANT WITHOUT BRASS INSERTS.

**PARTS** (ABS) VERSION MACHINE SCREWS M3-0.5 x 10mm.  
REPLACEMENT PN 1591MS100 (100 / BAG). (STYRENE) VERSION SELF TAPPING #4 x 0.5".  
REPLACEMENT PN 1599TS100BK (100 / BAG).

**COLORS** (ABS) BLACK, GRAY, BLUE, & BEIGE, (STYRENE) BLACK ONLY.



LID

UNLESS OTHERWISE SPECIFIED  
DIMENSIONS ARE IN INCHES

|        |            |
|--------|------------|
| X      | +/- .1     |
| XX     | +/- .05    |
| XXX    | +/- .015   |
| CUTS   | +/- .005   |
| ANGLES | +/- .5 DEC |

LOT/PCS

HAMMOND CLAIMS PROPRIETARY RIGHTS TO THE MATERIALS ON THIS DRAWING. IT IS INTENDED TO BE USED AS A REFERENCE FOR ENGINEERING INFORMATION ONLY. THIS INFORMATION MAY NOT BE USED TO MANUFACTURE PRODUCT WITHOUT WRITTEN PERMISSION FROM HAMMOND MANUFACTURING.



WEB: [WWW.HAMMONDMFG.COM](http://WWW.HAMMONDMFG.COM)

|  |             |
|--|-------------|
| TITLE                                    |             |
| HAMMOND 1591 SERIES<br>PLASTIC ENCLOSURE |             |
| DRAWN BY                                 | MJM         |
| DATE                                     | 01/23/01    |
| SCALE                                    | PAGE 2 OF 2 |
| PART NUMBER                              | 1591DFL     |