



# Hochstromkontakte

## High Power Contacts

### Technische Daten

#### Technical Data

##### Mechanische Daten

##### Mechanical Data

Mechanische Daten Mechanical Data	
Steckkraft <i>Mating force</i>	≤ 10 N
Ziehkraft <i>Unmating force</i>	≥ 1,6 N
Temperaturbereich (Prüfklasse 55/155/21 nach DIN, IEC 68 Teil 1) <i>Temperature range (test category 55/155/21 to DIN, IEC 68 part 1)</i>	-55 °C bis 125 °C -67 °F to 257 °F
Steckzyklen / <i>Mating cycles</i>	
- Anforderungsstufe 1 / <i>Performance class 1</i>	≥ 500
- Anforderungsstufe 2 / <i>Performance class 2</i>	≥ 400
- Anforderungsstufe 3 / <i>Performance class 3</i>	≥ 50

##### Elektrische Daten

##### Electrical Data

Elektrische Daten Electrical Data	
Durchgangswiderstand Außenleiter <i>Contact resistance outer conductor</i>	≤ 1 mΩ
Maximaler Kontaktstrom (DC) <i>Current rating (DC)</i>	10 - 40 A

##### Materialien

##### Materials

Materialien Materials	
Stiftkontakt <i>Pin contact</i>	Cu Legierung <i>Cu alloy</i>
Buchsenkontakt <i>Socket contact</i>	Cu Legierung <i>Cu alloy</i>
Halteclip <i>Retaining clip</i>	Cu Legierung <i>Cu alloy</i>



Stecker bzw. Stiftkontakte (P) dürfen nur in **Messerleisten**, Steckdosen bzw. Buchsenkontakte (S) nur in **Federleisten** montiert werden.  
*Plugs or pin contacts may only be mounted in **male connectors**, receptacles or sockets may only be mounted in **female connectors**.*

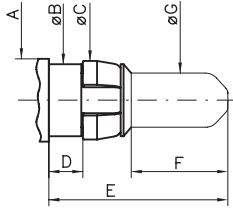


# Hochstromkontakte, Abmessungen Steckbereich

## High Power Contacts, Mating Area Dimensions

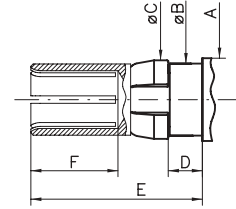
**Stecker**

**Plug**



**Buchse**

**Socket**



	Stecker / Plug		Buchse / Socket	
	min	max.	min	max.
<b>A</b>	—	6,00 (0.236)	—	6,00 (0.236)
<b>ØB</b>	4,80 <sub>f9</sub> (0.189)		4,80 <sub>f9</sub> (0.189)	
<b>ØC</b>	5,00 (0.197)	5,40 (0.213)	5,00 (0.197)	5,40 (0.213)
<b>D</b>	2,22 (0.087)	2,40 (0.094)	2,22 (0.087)	2,40 (0.094)
<b>E</b>	—	12,00 (0.472)	—	11,40 (0.449)
<b>F*</b>	6,40 (0.252)	6,50 (0.256)	—	—
<b>ØG</b>	3,55 (0.140)	3,60 (0.142)	—	—

\* Voreilender Steckbereich siehe Kontaktzeichnungen

\* Extended pin please see contact drawings

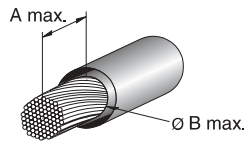
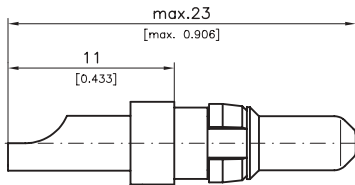


## Gerader Löttopfanschluss, 10, 20, 40 A

### Straight Solder Termination, 10, 20, 40 A

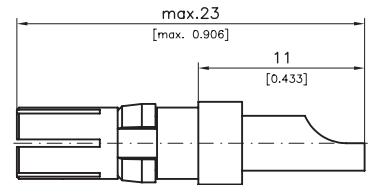
#### Stecker P

##### Plug P



#### Steckdose S

##### Receptacle S



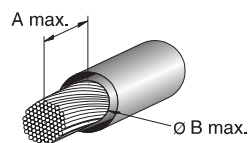
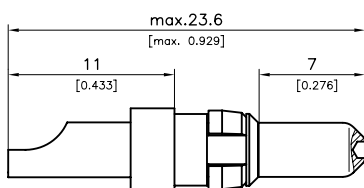
Bestell Nr. Stecker Order No. Plug			Kabelgröße Wire Size	Kabelabmessungen Cable Dimensions		Max. Strom Max. Current	Bestell Nr. Steckdose Order No. Receptacle		
Anforderungsstufe / Performance Class				A	B		Anforderungsstufe / Performance Class		
1	2	3					1	2	3
FMP050P103	FMP050P115	FMP050P105	AWG 16-20	7,8 (0.307)	1,7 (0.067)	10 A	FMP050S103	FMP050S115	FMP050S105
FMP001P103	FMP001P115	FMP001P105	AWG 12-16	7,8 (0.307)	2,6 (0.102)	20 A	FMP001S103	FMP001S115	FMP001S105
FMP051P103	FMP051P115	FMP051P105	AWG 8-12	7,8 (0.307)	4,6 (0.181)	40 A	FMP051S103	FMP051S115	FMP051S105

## Gerader Löttopfanschluss, voreilender Steckbereich, 10, 20, 40 A

### Straight Solder Termination, Extended Pin, 10, 20, 40 A

#### Stecker P

##### Plug P



Bestell Nr. Stecker Order No. Plug			Kabelgröße Wire Size	Kabelabmessungen Cable Dimensions		Max. Strom Max. Current
Anforderungsstufe / Performance Class				A	B	
1	2	3				
FMP027P103	FMP027P115	FMP027P105	AWG 16-20	7,8 (0.307)	1,7 (0.067)	10 A
FMP028P103	FMP028P115	FMP028P105	AWG 12-16	7,8 (0.307)	2,6 (0.102)	20 A
FMP029P103	FMP029P115	FMP029P105	AWG 8-12	7,8 (0.307)	4,6 (0.181)	40 A

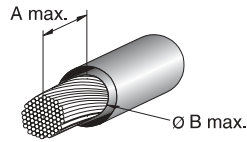
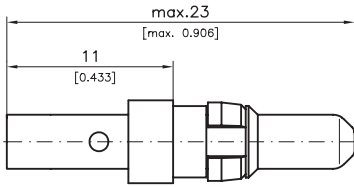


## Gerader Crimpanschluss, 10 - 40 A

### Straight Crimp Termination, 10 - 40 A

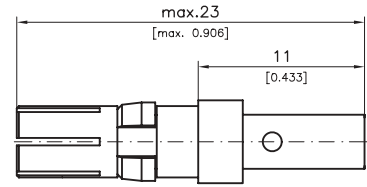
#### Stecker P

##### Plug P



#### Steckdose S

##### Receptacle S



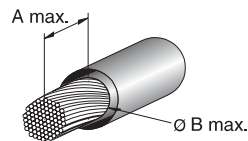
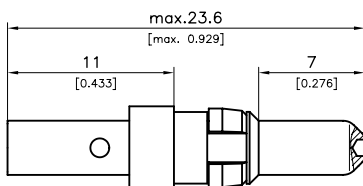
Bestell Nr. Stecker Order No. Plug			Kabelgröße Wire Size	Kabelabmessungen Cable Dimensions		Max. Strom Max. Current	Bestell Nr. Steckdose Order No. Receptacle		
Anforderungsstufe / Performance Class				A	B		Anforderungsstufe / Performance Class		
1	2	3					1	2	3
FMP035P103	FMP035P117	FMP035P106	AWG 16-20	7,8 (0.307)	1,7 (0.067)	10 A	FMP035S103	FMP035S117	FMP035S106
FMP036P103	FMP036P117	FMP036P106	AWG 12-16	7,8 (0.307)	2,6 (0.102)	20 A	FMP036S103	FMP036S117	FMP036S106
FMP052P103	FMP052P117	FMP052P106	AWG 10-14	7,8 (0.307)	3,7 (0.146)	30 A	FMP052S103	FMP052S117	FMP052S106
FMP037P103	FMP037P117	FMP037P106	AWG 8-12	7,8 (0.307)	4,6 (0.181)	40 A	FMP037S103	FMP037S117	FMP037S106

## Gerader Crimpanschluss, voreilender Steckbereich, 10 - 40 A

### Straight Crimp Termination, Extended Pin, 10 - 40 A

#### Stecker P

##### Plug P



Bestell Nr. Stecker Order No. Plug			Kabelgröße Wire Size	Kabelabmessungen Cable Dimensions		Max. Strom Max. Current
Anforderungsstufe / Performance Class				A	B	
1	2	3				
FMP024P103	FMP024P117	FMP024P106	AWG 16-20	7,8 (0.307)	1,7 (0.067)	10 A
FMP025P103	FMP025P117	FMP025P106	AWG 12-16	7,8 (0.307)	2,6 (0.102)	20 A
FMP055P103	FMP055P117	FMP055P106	AWG 10-14	7,8 (0.307)	3,7 (0.146)	30 A
FMP026P103	FMP026P117	FMP026P106	AWG 8-12	7,8 (0.307)	4,6 (0.181)	40 A

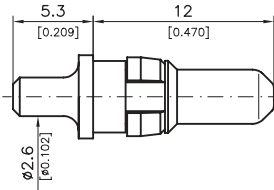


## Gerader Leiterplattenanschluss, 20 A

### Straight PCB Termination, 20 A

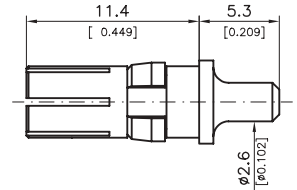
#### Stecker P

##### Plug P



#### Steckdose S

##### Receptacle S



Bestell Nr. Stecker Order No. Plug			Max. Strom Max. Current	Bestell Nr. Steckdose Order No. Receptacle		
Anforderungsstufe / Performance Class				Anforderungsstufe / Performance Class		
1	2	3		1	2	3
FMP224P104	FMP224P115	FMP224P105	20 A	FMP224S104	FMP224S115	FMP224S105

Leiterplattenlochbild siehe Seite 10

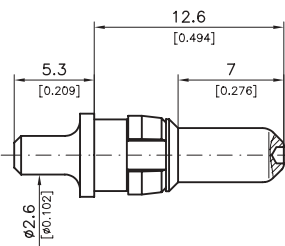
PCB hole pattern see page 10

## Gerader Leiterplattenanschluss, voreilender Steckbereich, 20 A

### Straight PCB Termination, Extended Pin, 20 A

#### Stecker P

##### Plug P



Bestell Nr. Stecker Order No. Plug			Max. Strom Max. Current
Anforderungsstufe / Performance Class			
1	2	3	
FMP079P104	FMP079P115	FMP079P105	20 A

Leiterplattenlochbild siehe Seite 10

PCB hole pattern see page 10

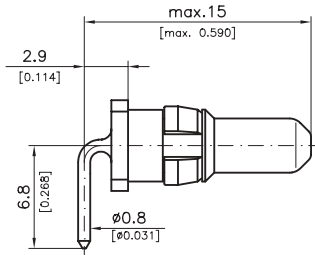


## Abgewinkelter Leiterplattenanschluss, 10 A

### Right Angled PCB Termination, 10 A

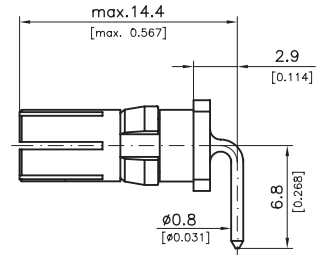
#### Stecker P

##### Plug P



#### Steckdose S

##### Receptacle S



Bestell Nr. Stecker Order No. Plug			Max. Strom Max. Current	Bestell Nr. Steckdose Order No. Receptacle		
Anforderungsstufe / Performance Class				Anforderungsstufe / Performance Class		
1	2	3	10 A	1	2	3
FMP054P104	FMP054P115	FMP054P105			FMP054S104	FMP054S115

Leiterplattenlochbild siehe Seite 8

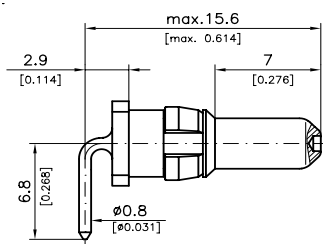
PCB hole pattern see page 8

## Abgewinkelter Leiterplattenanschluss, voreilender Steckbereich, 10 A

### Right angled PCB Termination, Extended Pin, 10 A

#### Stecker P

##### Plug P



Bestell Nr. Stecker Order No. Plug			Max. Strom Max. Current
Anforderungsstufe / Performance Class			
1	2	3	10 A
FMP013P104	FMP013P115	FMP013P105	

Leiterplattenlochbild siehe Seite 8

PCB hole pattern see page 8

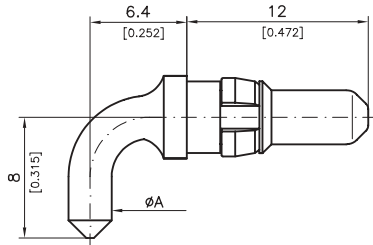


## Abgewinkelter Leiterplattenanschluss, 20, 40 A

### Right Angled PCB Termination, 20, 40 A

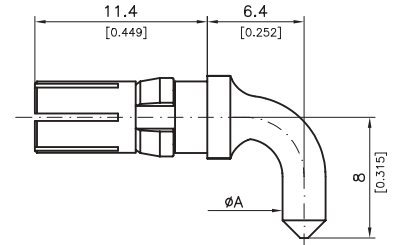
#### Stecker P

##### Plug P



#### Steckdose S

##### Receptacle S



Bestell Nr. Stecker Order No. Plug			Max. Strom Max. Current	Kontaktabmessung Contact Dimension A	Bestell Nr. Steckdose Order No. Receptacle		
Anforderungsstufe / Performance Class					Anforderungsstufe / Performance Class		
1	2	3			1	2	3
FMP047P104	FMP047P115	FMP047P105	20 A	2,9 (0.114)	FMP047S104	FMP047S115	FMP047S105
FMP077P104	FMP077P115	FMP077P105	40 A	3,8 (0.150)	FMP077S104	FMP077S115	FMP077S105

Leiterplattenlochbild siehe Seite 8

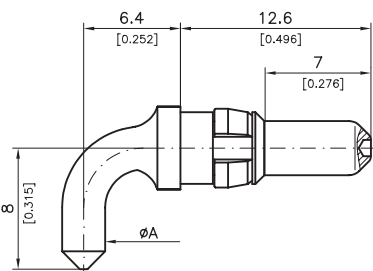
PCB hole pattern see page 8

## Abgewinkelter Leiterplattenanschluss, voreilender Steckbereich, 20, 40 A

### Right Angled PCB Termination, Extended Pin, 20, 40 A

#### Stecker P

##### Plug P



Bestell Nr. Stecker Order No. Plug			Max. Strom Max. Current	Kontaktabmessung Contact Dimension A
Anforderungsstufe / Performance Class				
1	2	3		
FMP076P104	FMP076P115	FMP076P105	20 A	2,9 (0.114)
FMP078P104	FMP078P115	FMP078P105	40 A	3,8 (0.150)

Leiterplattenlochbild siehe Seite 8

PCB hole pattern see page 8

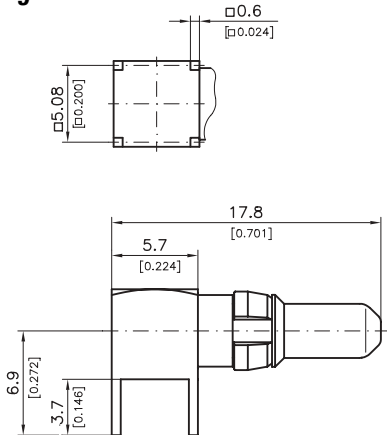


## Abgewinkelter Leiterplattenanschluss, 40 A

### Right Angled PCB Termination, 40 A

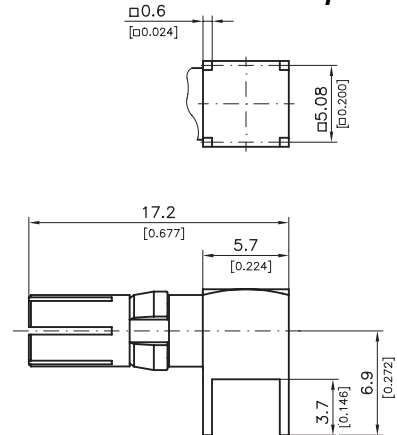
#### Stecker P

##### Plug P



#### Steckdose S

##### Receptacle S



Bestell Nr. Stecker Order No. Plug			Max. Strom Max. Current	Bestell Nr. Steckdose Order No. Receptacle		
Anforderungsstufe / Performance Class				Anforderungsstufe / Performance Class		
1	2	3		SW	2	3
FMP012P104	FMP012P115	FMP012P105	40 A	FMP012S104	FMP012S115	FMP012S105

Leiterplattenlochbild siehe Seite 8

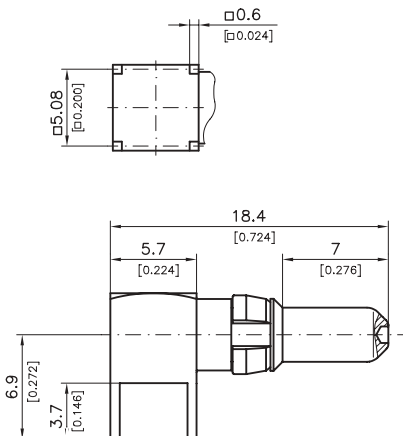
PCB hole pattern see page 8

## Abgewinkelter Leiterplattenanschluss, voreilender Steckbereich, 40 A

### Right Angled PCB Termination, Extended Pin, 40 A

#### Stecker P

##### Plug P



Bestell Nr. Stecker Order No. Plug			Max. Strom Max. Current
Anforderungsstufe / Performance Class			
1	2	3	
FMP057P104	FMP057P115	FMP057P105	40 A

Leiterplattenlochbild siehe Seite 8

PCB hole pattern see page 8