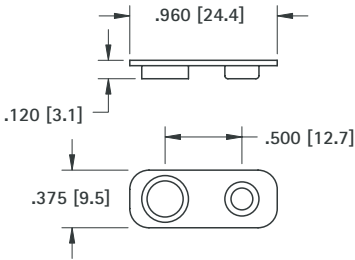


PROTECTIVE BATTERY CAP

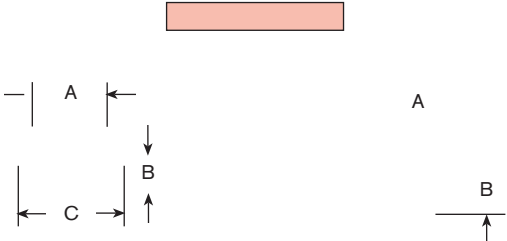
- Protects 9 Volt batteries and battery packs when they are not in use
- Snap-fits onto battery contacts
- Both male and female contacts are covered, minimizing physical damage which can occur during battery handling, shipping and storage
- Shields the battery contacts and reduces the potential of a short circuit between battery poles
- Protects sensitive electronic equipment, systems and circuits, cap prevents unwanted electrical discharges
- Protects the battery contacts from damage due to dust, dirt and contamination

MATERIAL:
Impact Resistant Polypropylene, Black

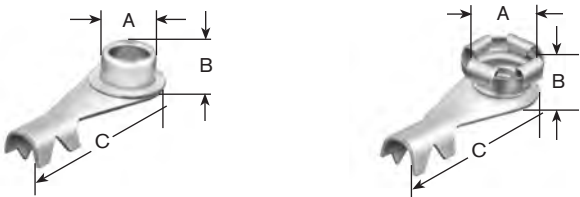


BATTERY SNAP-ONS

For most electronic applications requiring a quick connect and disconnect of circuit. Commonly used with 9 Volt or other batteries designed with snap fasteners. Ideal for temporary or permanent means of connecting without soldering. Can be cascaded together for multiple connections.



SOCKET OR STUD W/CRIMP LUG



| CAT. NO. | FIG NO. | A | B | C | SIZE | MATERIAL |
|----------|---------|------------|------------|-------------|--------|--|
| 263* | 3 | .225 (5.7) | .170 (4.3) | .790 (20.1) | Junior | Stud: Steel, Nickel Plate Lug: Brass, Tin Plate |
| 271* | 4 | .205 (5.2) | .200 (5.1) | .790 (20.1) | | |
| 264 | 3 | .283 (7.2) | .185 (4.7) | .840 (21.3) | Senior | Stud: Brass, Nickel Plate Lug: Brass, Tin Plate |
| 272 | 4 | .265 (6.7) | .185 (4.7) | .835 (21.2) | | |

*Use Jr. Socket and stud for standard 9 Volt Battery

DIMENSIONS ARE FOR REFERENCE ONLY

*Use Jr. Socket and stud for standard 9 Volt Battery