

Raspberry Pi Enclosures

No screws, no glue – just add your *Raspberry Pi*

- Designed to house the *Raspberry Pi* via clip-in grooves - **NO SCREWS REQUIRED!**
- All cut-outs are pre-cut into the case - **NO MODS REQUIRED!**
- Supplied with Rubber feet
- **Gloss Finish**
- **Mix and Match Colours**

Material:

- Thickness 3mm: HB Rated
- Coloured Materials: High Impact Polystyrene (HIPS)
- Carbon Fibre Finish: Acrylic Capped ABS



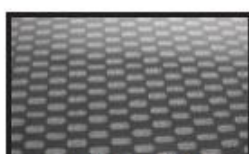
Raspberry Pi not included



White



Black



Carbon Fibre



Lilac



Purple



Red



Green



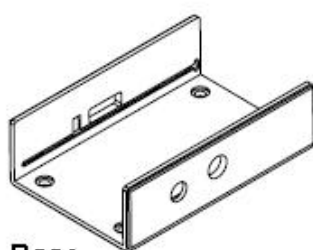
Yellow



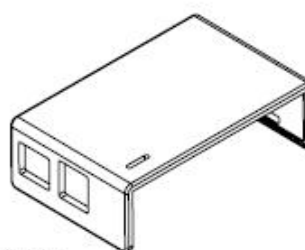
Orange



Blue



Base



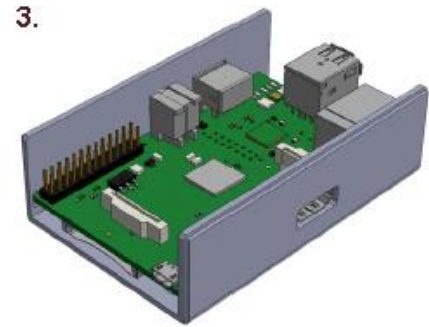
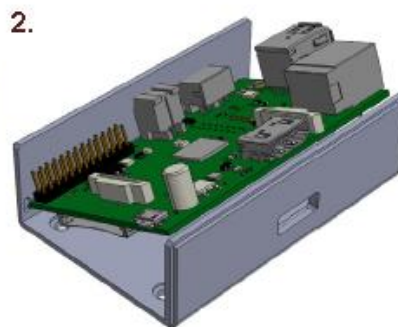
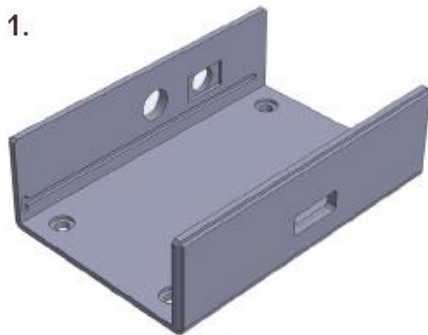
Top

RS Stock No.	Colour
768-3961	Black
768-3964	Blue
768-3968	Green
768-3977	Lilac
768-3970	Orange
768-3974	Purple
768-3983	Red
768-3986	White
768-3980	Yellow
768-3999	Carbon fibre

RS Stock No.	Colour
768-3924	Black
768-3933	Blue
768-3936	Green
768-3930	Lilac
768-3949	Orange
768-3942	Purple
768-3946	Red
768-3955	White
768-3958	Yellow
768-3952	Carbon fibre

PCB Assembly

1. Place your Raspberry Pi enclosure base onto a steady surface.
2. Tilting your Raspberry Pi at 45° angle, align the audio and RCA video ports with the machined holes in the base and push until the PCB clips into the PCB groove.
3. Push the opposite side of the PCB down so that it clips into the second PCB groove in the base.



Enclosure Assembly

4. Placing the top cover at a 45° angle clip over the USB and LAN connectors. Then clip the opposite end of the top onto the base.
5. Peel off the protective film on both the top and base of your enclosure.
6. Push the supplied feet into place if required.

