

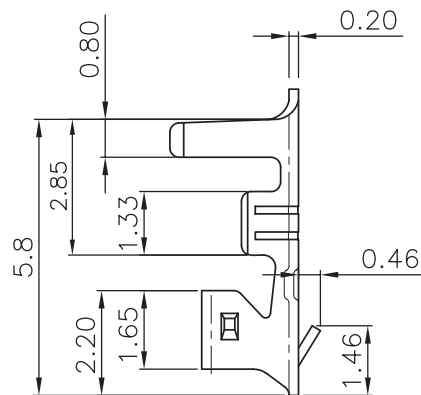
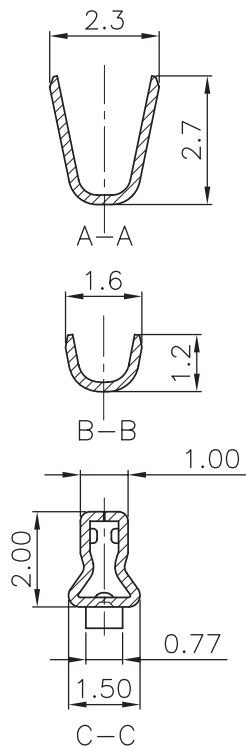
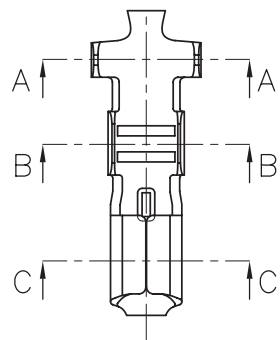
1

2

3

4

5



TECHNICAL CHARACTERISTICS

MATERIAL

CONTACT MATERIAL: COPPER ALLOY
 CONTACT TYPE: STAMPED
 CONTACT PLATING: TIN
 QUALITY CLASS: 25 MATING CYCLES
 PITCH: 2.00MM

ENVIRONMENTAL

OPERATING TEMPERATURE: -25°C UP TO +85°C
 COMPLIANCE: LEAD FREE AND ROHS

ELECTRICAL

CURRENT RATING: 2A
 WORKING VOLTAGE: 125V AC
 CONTACT RESISTANCE: 20 mOHM MAX

WIRE DIMENSION

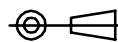
AWG: AWG 24 - 28

PACKAGING

BULK/LOOSE DELIVERY IN A BAG
 EACH TERMINAL SEPARATED FROM EACH OTHER
 NOT ON A REEL
 100PCS/PER BAG. MULTIPLE OF 100PCS ONLY
 1PC OF 62000113722DEC=1 CRIMP TERMINAL
 SO 1 BAG MEANS 100 PCS OF 62000113722DEC

RoHS Compliant

PROJECTION:



GENERAL TOLERANCE

.X = +/- 0.2

.XX = +/- 0.15



APPROVAL: RJ

UNIT: MM

DESCRIPTION: 2.00 MM FEMALE CRIMP TERMINAL

SIZE

APPROVAL: RJ

SCALE:

WERI PART NO: 62000113722DEC

A4

APPROVAL: RJ

SHEET: 1/1

APPROVAL: RJ

DRAW: MIKE

G			
F			
E			
D			
C	26-MAY-14	OPE TEMPERATURE	QL
B	06-AUG-13	CHARACTERISTIC	QL
A	12-MAY-10	PDF	JP
REV	DATE	FILE	BY