



KN-BM60

MANUAL



IP Baby and Child Monitor

**Table of contents**

• Introduction	2
• Safety precautions	2
• Packaging content	2
• System requirements	2
• Product description	3
• User instructions	3
• Maintenance	23
• Warranty	23
• Disclaimer	23
• Disposal	23

**Introduction**

The wireless kids monitor more than just a baby monitor with pan & tilt function enables parents to check the complete room within seconds and makes this product a perfect monitoring solution during the growing up years of their child. It facilitates remote viewing on smart devices and will send out an e-mail and/or push notification if it detects any motion or sound. For optimum protection the built-in temperature sensor will alert if the climate in the child's room changes. The kids monitor is easy to set up and requires no complex configuration. The uCare Cam app, available for free on Google Play and Apple App Store, offers a full scale of features enables parents to maintain a secure connection with their child anytime, anywhere.

- We recommend that you read this manual before installing/using this product.
- Keep this manual in a safe place for future reference.

**Safety precautions**

This product should ONLY be opened by an authorized technician when service is required. Disconnect the product from mains and other equipment if a problem should occur. Do not expose the product to water or moisture.

**Packaging content**

- 1x IP camera
- 1x Camera mount
- 1x AC/DC adapter
- 1x Quick start guide
- 1x CD with complete manual

**System requirements**

- Device running on iOS 5.0 and above
- Device running on Android 4.0 and above
- Wi-Fi Router

## Product description

1. Microphone
2. Light intensity sensor
3. Lens
4. IR LED
5. Loudspeaker
6. Antenna
7. Micro SD card slot
8. 5 V DC input
9. IO alarm connector
10. Ethernet connector
11. Temperature sensor



## Bottom

- Wi-Fi/Ethernet switch
- Connection for wall mount
- WPS/RESET button



## User instructions

### A. Hardware Installation


1. Please find a location to install IP baby and child monitor that is within good Wi-Fi signal reach of your home Router.
2. If you plan to hang the IP baby and child monitor, you can use the included mounting kit found in inside box.
3. If the included power cable does not have sufficient length to reach power outlet, please purchase an extender cable from your local electronics store.
4. Connect the camera power adapter.

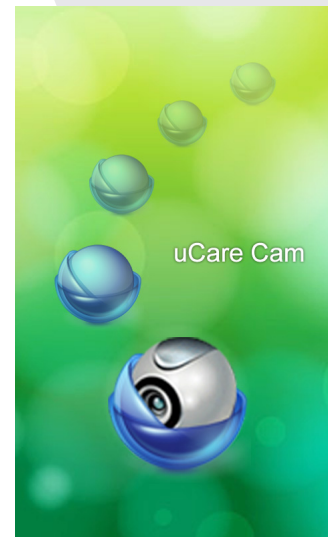

**Warning:**

Please use the power adapter included with your camera to avoid damage to the camera.

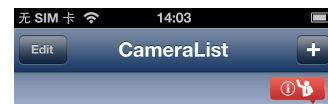
When the camera powers up, the status LED will be Green for about 15 seconds before flashing Red. If there is no Red LED flashing, please unplug the power cord, wait 5 seconds, then re-connect the power again. It will take about 60 seconds for the IP baby and child monitor to finish starting up. The status LED should alternate between Red and Green. If the status LED does not flash Red and Green, please press the WPS/RESET button at the back of IP baby and child monitor for 10 seconds.

**B. Hardware Installation**

1. Download the Smartphone APP "uCare Cam" from App store (iOS) or Play Store (Android).
2. Search for APP name "uCare Cam", then download and install it into Smartphone.
3. After the software installation is complete, the icon  will appear. Click on this to run the APP.


**C. uCare Cam APP Overview**

Default camera password: 0000  
 Default manager name: admin  
 Default manager password: 0000



There are 4 major function Tabs at the bottom of the APP main screen.

There's no camera in the list.


**Camera List Tab**

This is the main APP screen. In this Tab, all the cameras which have been added will be listed.

**Wi-Fi Setting or Wi-Fi Connect Tab**

Please go to this Tab to configure IP baby and child monitor Wi-Fi settings.

There are two methods to install a new IP baby and child monitor and connect it to a Wi-Fi Router.

1. Router Mode
2. WPS (Wi-Fi Protect Setup) Mode  
(Requires a Router with WPS function using WPA/WPA2 encryption - WEP encryption will not work)

### Play List Tab

Go to this Tab to view all Pictures taken by User via Smartphone. The Pictures will be listed by camera.

### Setting Tab

Configure IP baby and child monitor settings and playback remote microSD Card video.

User will need to input a management ID and Password to enter this Tab.

Default management ID: **admin**

Default Password: **0000**

If you forget your password, you can reset the IP baby and child monitor by pressing the WPS/RESET button at the back of the camera for 10 seconds. This will restore IP baby and child monitor to factory settings. You will need to set up the Wi-Fi connection again after you reset the camera.

### D. iOS – Setup IP baby and child monitor Wi-Fi

#### Method 1: Use WPS (Wi-Fi Protected Setup)

Available if your Wi-Fi Router supports WPS and it is set to use **WPA or WPA2 security encryption**. WEP security encryption is not supported in WPS mode. An easy way to check if your Router supports WPS is to look for a button that says “WPS” on the Router. It may also be called “AOSS” or “QSS”.

1. Press and hold the WPS/RESET button for 10 seconds at the back of the camera. It will reset and restart the IP baby and child monitor. After about 60 seconds, the LED color should flash Green and Red.
2. Press “WPS” button on Wi-Fi Router.
3. Press the WPS/RESET Button on the back of the IP baby and child monitor for 2 seconds.  
If IP baby and child monitor has entered the WPS connection mode, the status LED color will turn a fast blinking Green.
4. IP baby and child monitor will try for up to 2 minutes to connect to the Wi-Fi Router using WPS.
5. If the LED color changes to Orange, your IP baby and child monitor has successfully connected to your Router. If the LED does not change to Orange, the setup has failed. Please make sure the IP baby and child monitor is within Wi-Fi distance of your Router, press the WPS/RESET button for 10 seconds to reset IP baby and child monitor, and try the setup again.
6. Use Smartphone APP to add IP baby and child monitor into Camera list. See instruction manual – “iOS - Add IP baby and child monitor (already connected to Router) to APP”.


#### Method 2: Use Router Mode


You will first need to connect to the Router that is available inside IP baby and child monitor, configure the Wi-Fi settings for your home Router, then IP baby and child monitor will restart and connect to your home Router.

Write down or have handy, the SSID of your Wi-Fi Router and your Wi-Fi Password. For example, the SSID may be something like "TP-Link-XXXXX" or "NETGEAR". You will need both the SSID and the Password during this process.

1. Make sure the status LED on IP baby and child monitor is blinking Red and Green. If the status LED is not blinking Red and Green, please press and hold the WPS/RESET button for 10 seconds to reset IP baby and child monitor. Wait for 1-2 minutes for it to restart and the LED should become Red and Green.

2. Connect your iOS device to the router inside IP baby and child monitor. To connect to IP baby and child monitor router,

open up **"Settings"** , then **"Wi-Fi"** and let it search for network. The network will be **"Wi-Fi-cam-p2p"**. Click on **"Wi-Fi-cam-p2p"** to connect.

3. Now, open the Smartphone APP "uCare Cam"  and click on the Tab at the bottom of the screen that says **"Wi-Fi Connect"**. Click on **"Router mode"**, then **"Next"**. You will see live video.

4. Enter the Wi-Fi router SSID and password for your home router. Click on **"Next"** button and again, on the next screen, the **"Next"** button.

5. Please enter a Camera name (2 to 20 characters) and default password "0000". You are encouraged to change the default password after setup for security purposes. Then click **"Finish"**.

6. After IP baby and child monitor receives this information, it will restart. Please wait for it to start up and connect to your home router. When it successfully connects, the status LED color will turn Orange. It may take up to 10 minutes. If the status LED color does not turn Orange, please check your router and make sure IP baby and child monitor is within the signal area of your Wi-Fi router. Then try setup again, starting from Step3.

7. Your iOS device should have disconnected from **"Wi-Fi-cam-p2p"** and reconnected to your home Router. Please check that your iOS device has connected to your home Router now, via **"Settings"** -> **"Wi-Fi"**. If it has not, please connect your Smartphone to your home Router Wi-Fi.

8. Open "uCare Cam" Smartphone App, you can click on the camera name in Camera List view to connect.



#### Step 3.

Please wait for the video screen and then press Next button to continue.



Previous

Next



#### Step 4.

Please enter the WiFi Router's SSID and password that camera wants to connect. When finished, click the Next button to continue setting:

WiFi SSID

Password

Previous

Next





## E. Android – Setup IP baby and child monitor Wi-Fi

There are two methods to setup IP baby and child monitor to connect to a new Wi-Fi Router.


### Method 1: Use WPS (Wi-Fi Protected Setup)

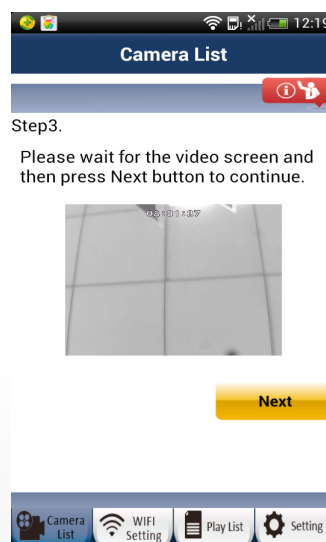
Available if your Wi-Fi Router supports WPS and it is set to use **WPA or WPA2 security encryption**. WEP security encryption is not supported for WPS mode. An easy way to check if your Router supports WPS is to look for a button that says "WPS" on the Router. It may also be called "AOSS" or "QSS".

1. Press and hold the WPS/RESET button for 10 seconds at the back of the camera. It will reset and restart the IP baby and child monitor. After about 60 seconds, the LED color should flash Green and Red.
2. Press "WPS" button on Wi-Fi Router.
3. Press the WPS/RESET Button on the back of the IP baby and child monitor for 2 seconds. If IP baby and child monitor has entered the WPS connection mode, the status LED color will turn a fast blinking Green.
4. IP baby and child monitor will try for up to 2 minutes to connect to the Wi-Fi Router using WPS.
5. If the LED color changes to Orange, your IP baby and child monitor has successfully connected to your Router. If the LED does not change to Orange, the setup has failed. Please make sure the IP baby and child monitor is within Wi-Fi distance of your Router, press the WPS/RESET button for 10 seconds to reset IP baby and child monitor, and try the setup again.
6. Use Smartphone APP to add IP baby and child monitor into Camera list. See instruction manual – "Android - Add IP baby and child monitor(already connected to Router) to APP".

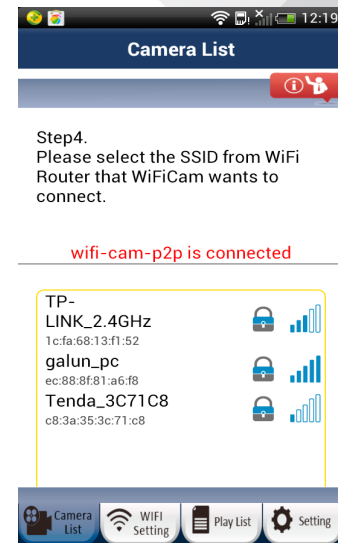
### Method 2: Use Router Mode

Please have your Wi-Fi password readily available as you will need it in this process.

1. Open the Smartphone APP "uCare Cam"  and click on the Tab at the bottom of the screen that says "Wi-Fi Setting".
2. Click on "Router mode".
3. Make sure the status LED on IP baby and child monitor is blinking Red and Green. If the status LED is not blinking Red and Green, please press and hold the WPS/RESET button for 10 seconds to reset IP baby and child monitor. Wait for 1-2 minutes for it to restart and the LED should become Red and Green.
4. Click "Next". Your Smartphone will start to search for IP baby and child monitor. Once it finds it, you will see live video. Click on "Next" button.
5. Your Smartphone will search for nearby Wi-Fi signals. Once they are found, you will see a list of Routers.
6. Click on your Router name and enter your Wi-Fi password in the pop-up screen.



7. Please enter a Camera name (2 to 20 characters) and default password "0000". You are encouraged to change the default password after setup for security purposes. Then click "OK" in the top right corner.
8. The camera will restart and the Smartphone App will automatically connect to the camera in Live View.
9. When IP baby and child monitor successfully connects to your Router, the status LED color will turn Orange. It may take up to 10 minutes. If the status LED color does not turn Orange, please check your Router and make sure IP baby and child monitor is within the signal area of your Wi-Fi Router. Then try the setup again.
10. If the setup is successful, the IP baby and child monitor will be automatically added to your Camera List window and you can click on the camera name to view Live Video.




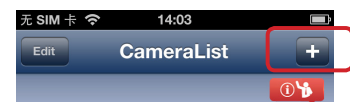
#### F. iOS – Add IP baby and child monitor (already connected to Router) to APP

There are three ways to add a IP baby and child monitor to the Camera List view if the IP baby and child monitor is already connected to the internet. You can:

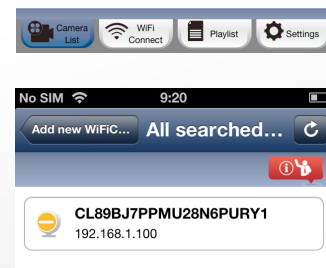
- Scan for IP baby and child monitor in local intranet
- Scan QR code at back of IP baby and child monitor
- Type in 20 digit code

#### Method 1: Scan for IP baby and child monitor in local intranet

1. Make sure your Smartphone is connected to the same Router as your IP baby and child monitor. Open up the Smartphone APP "uCare Cam"  and click on the "+" at the top right of the screen.
2. Click on "Scan Camera's UID in intranet".
3. You will see a list of UID's that were found on your local intranet.
4. Click on the UID you would like to add.
5. Please enter a Camera name (2 to 20 characters) and the camera password. Default password is 0000. Click "Done" on top right of window.
6. You will see the Camera name now in Camera List view. It should indicate that the Camera is "Online". To connect to the Camera, please click on Camera name. If the Camera is not "Online", you may need to force Reconnect. To force Reconnect, click on the right arrow and click on "Reconnect". Click on Camera name once it shows "Online".




There's no camera in the list.






**Method 2: Scan QR Code at back of IP baby and child monitor**

1. Make sure your Smartphone is connected to the internet. Open up the Smartphone APP "uCare Cam"  and click on the "+" at the top right of the screen.
2. Click on **"Scan camera QR code"**.
3. You will see your Smartphone camera live view. Face your Smartphone camera towards the QR code found on the back of IP baby and child monitor. Please make sure the QR code is clear and fully viewable in the screen. Once the QR code has been detected, the APP will display the UID in the APP window.
4. Please enter a Camera name (2 to 20 characters) and the camera password. Default password is 0000. Click **"Done"** on upper right of the screen.
5. You will see the Camera name now in Camera List view. It should indicate that the Camera is **"Online"**. To connect to the Camera, please click on Camera name. If the Camera is not **"Online"**, you may need to force Reconnect. To force Reconnect, click on the right arrow and click on **"Reconnect"**. Click on Camera name once it shows **"Online"**.

**Method 3: Type in 20 digit QR code**


1. Make sure your Smartphone is connected to the internet. Open up the Smartphone APP "uCare Cam"  and click on the "+" at the top right of the screen.
2. Click in the **"UID"** field to enter typing mode.
3. Type in 20 digit code exactly as printed underneath the QR code in back of IP baby and child monitor.
4. Please enter a Camera name (2 to 20 characters) and the camera password. Default password is 0000. Click **"Done"** on upper right of the screen.
5. You will see the Camera name now in Camera List view. It should indicate that the Camera is **"Online"**. To connect to the Camera, please click on Camera name. If the Camera is not **"Online"**, you may need to force Reconnect. To force Reconnect, click on the right arrow and click on **"Reconnect"**. Click on Camera name once it shows **"Online"**.

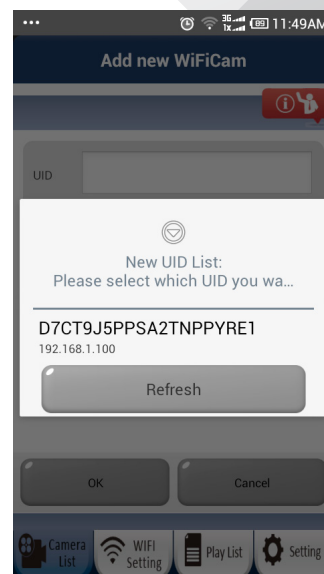
**G. Android – Add IP baby and child monitor (already connected to Router) to APP**

There are three ways to add a IP baby and child monitor to the Camera List view if the IP baby and child monitor is already connected to the internet. You can:


- Scan for IP baby and child monitor in local intranet
- Scan QR code at back of IP baby and child monitor
- Type in 20 digit code

### Method 1: Scan for IP baby and child monitor in local intranet


1. Make sure your Smartphone is connected to the same Router as your IP baby and child monitor. Open up the Smartphone APP "uCare Cam"  and click on the "Click here to import installed Wi-FiCam" at the top of the screen.
2. Click on "Search".
3. You will see a list of UID's that were found on your local intranet (Figure XX).
4. Click on the UID you would like to add.
5. Please enter a Camera name (2 to 20 characters) and the camera password. Default password is 0000. Click "OK" on the bottom of the screen.
6. You will see the Camera name now in Camera List view. It should indicate that the Camera is "Online". To connect to the Camera, please click on Camera name. If the Camera is not "Online", you may need to force Reconnect. To force Reconnect, click and hold on Camera name. A pop-up window will give you options to Reconnect, Edit, and Remove Camera. Click on "Reconnect" then click on Camera name once it shows "Online".



### Method 2: Scan QR Code at back of IP baby and child monitor

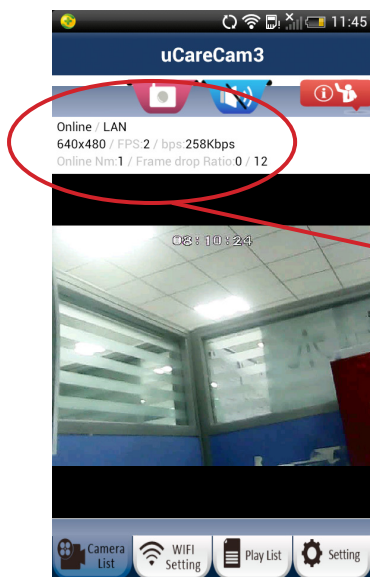
1. Make sure your Smartphone is connected to the internet. Open up the Smartphone APP "uCare Cam"  and click on the "Click here to import installed Wi-FiCam" at the top of the screen.
2. Click on "QRCode". You are required to have a QR code reader installed on your Android phone. A popular QR code reader might be "QR Droid".
3. You will see your Smartphone camera live view. Face your Smartphone camera towards the QR code found on the back of IP baby and child monitor. Please make sure the QR code is clear and fully viewable in the screen. Once the QR code has been detected, the APP will display the UID in the APP window.
4. Please enter a Camera name (2 to 20 characters) and the camera password. Default password is 0000. Click "OK" on the bottom of the screen.
5. You will see the Camera name now in Camera List view. It should indicate that the Camera is "Online". To connect to the Camera, please click on Camera name. If the Camera is not "Online", you may need to force Reconnect. To force Reconnect, click and hold on Camera name. A pop-up window will give you options to Reconnect, Edit, and Remove Camera. Click on "Reconnect" then click on Camera name once it shows "Online".

### Method 3: Type in 20 digit QR code

1. Make sure your Smartphone is connected to the internet. Open up the Smartphone APP "uCare Cam"  and click on the "Click here to import installed Wi-Fi-Cam" at the top of the screen.

2. Click in the "UID" field to enter typing mode.
3. Type in 20 digit code exactly as printed underneath the QR code in back of IP baby and child monitor.
4. Please enter a Camera name (2 to 20 characters) and the camera password. Default password is 0000. Click "OK" on the bottom of the screen.
5. You will see the Camera name now in Camera List view. It should indicate that the Camera is "Online". To connect to the Camera, please click on Camera name. If the Camera is not "Online", you may need to force Reconnect. To force Reconnect, click and hold on Camera name. A pop-up window will give you options to Reconnect, Edit, and Remove Camera. Click on "Reconnect" then click on Camera name once it shows "Online".

#### H. Live Video Window & Network Connection Type



When you connect to your IP baby and child monitor, you will see the below Live Video screen. At the top of the screen, there will be some information listed to help you understand the performance of your internet connection.

Online / LAN  
640x480 / FPS:2 / bps:258Kbps  
Online Nm:1 / Frame drop Ratio:0 / 12

- **Online/P2P:** Connection type - there are three types, LAN, P2P, and Relay. Connection type shown is P2P
- **640x480** is the video resolution. IP baby and child monitor supports VGA 640x480, QVGA 320x240, and QCIF 160x120
- **FPS** is current frames per second
- **OnLine Nm:** number of users currently connected to this IP baby and child monitor
- **Frame Ratio 0/499:** first number is packet loss number, second number is packet receive number. If the first number is too high compared to the second number, it means that your internet connection speed is slow or unsteady.

#### Connection Types

There are three types of network connection types possible between IP baby and child monitor and your Smartphone APP.

##### 1) Local Area Network (LAN) Mode

Both IP baby and child monitor and your Smartphone are connected to the same Wi-Fi Router.

Typical frame rate will be around VGA 640x480 15~20fps.

## 2) Point to Point (P2P) Mode

IP baby and child monitor will establish a point to point network connection directly with the Smartphone.

Typical scenario will be that the IP baby and child monitor is installed at home or in the office and the Smartphone has a 3G/3.5G/4G internet connection. Typical frame rate will be around VGA 640x480 10~15 fps.

## 3) Relay Mode

IP baby and child monitor and Smartphone cannot establish a point to point network connection link. IP baby and child monitor must send Audio/Video data to a Relay Server and the Smartphone will retrieve data from the Relay server. In Relay mode, there will be a limit on the Video download frame rate. Typical scenario will be that the IP baby and child monitor is installed at home or in the office and the Smartphone is using a Wi-Fi connection.

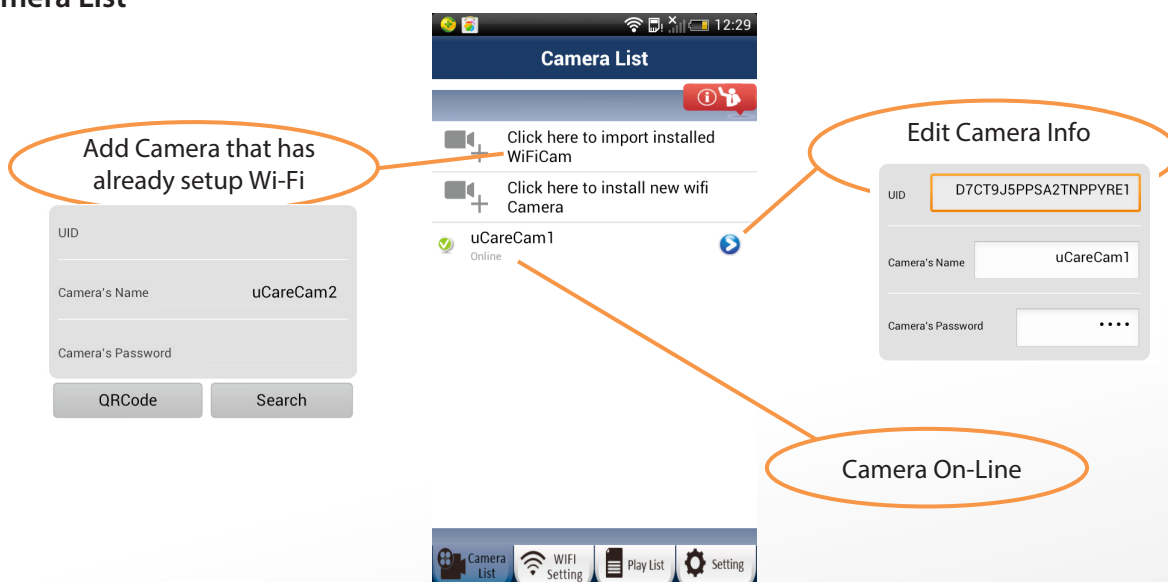
### Remark:

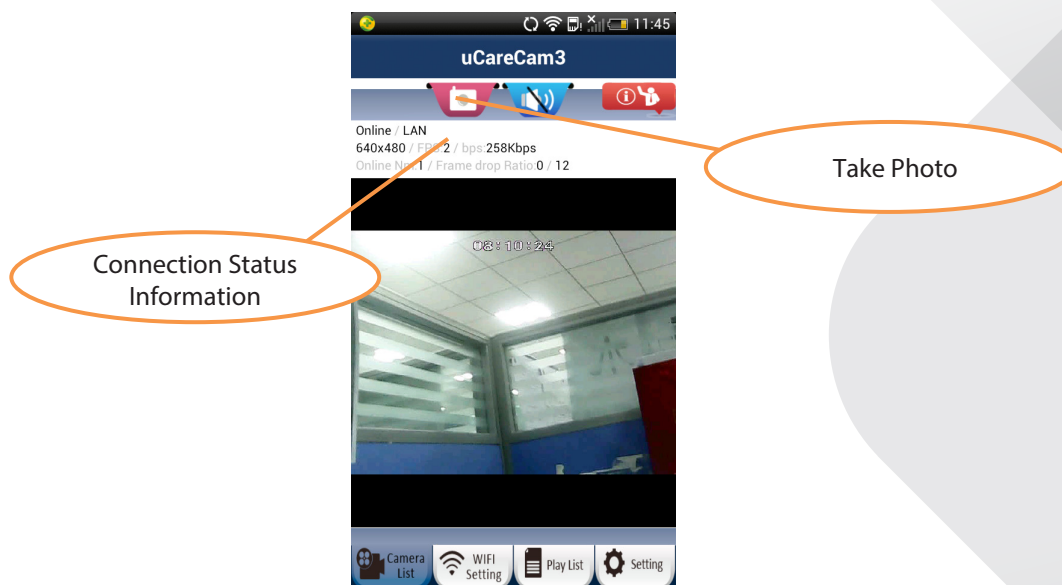
- When using 3G/3.5G/4G to connect to IP baby and child monitor, the APP will use P2P mode.
- If the Smartphone download speed is too slow, the APP will switch to Relay mode. The user can force the APP to reconnect to IP baby and child monitor and it will try P2P mode again. To force reconnect, press and hold the camera name on Camera list. A pop-up menu will appear with the option to "Reconnect". Please click "Reconnect".

## I. Using the IP baby and child monitor APP

The IP baby and child monitor has a lot of functions possible through the Smartphone APP. Please see below for some of the key functions.

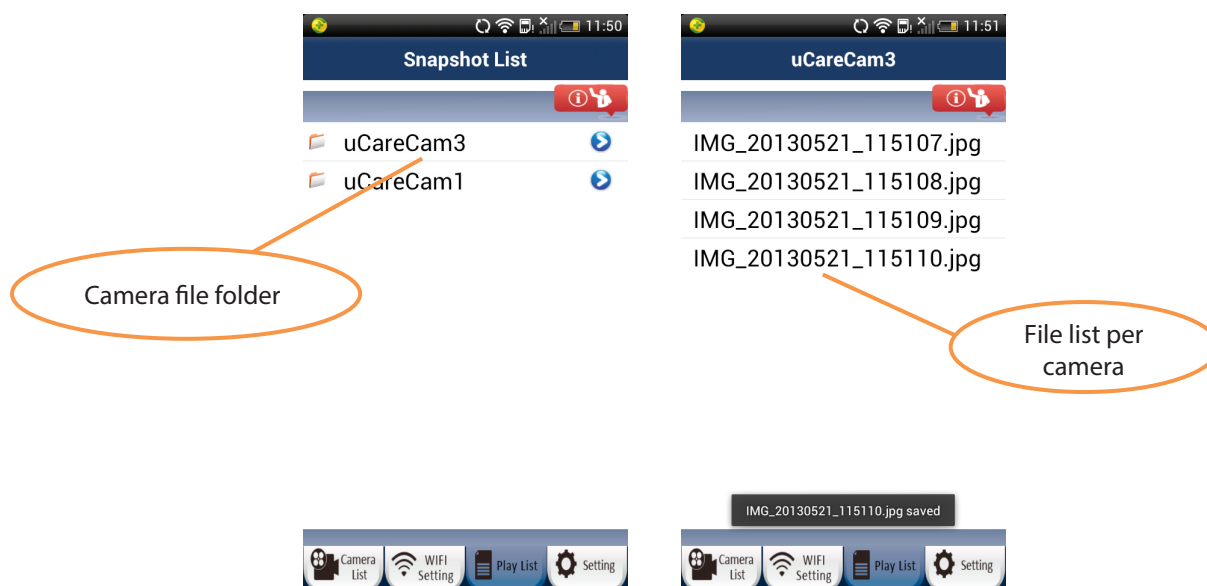
### Camera List

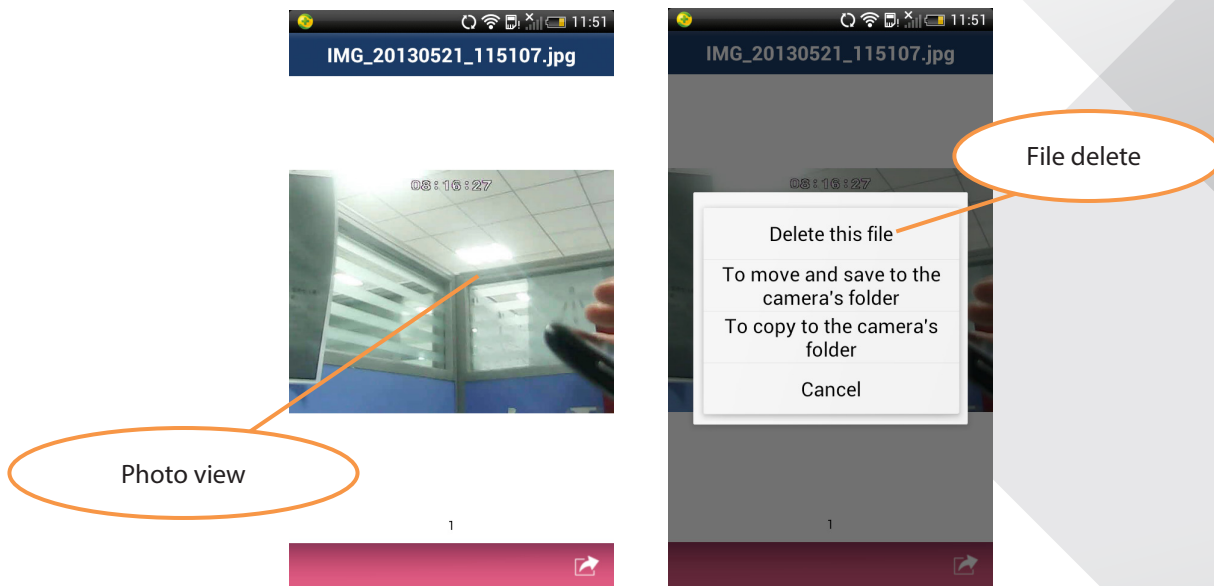




## Playlist

User can view, delete, and copy picture files.





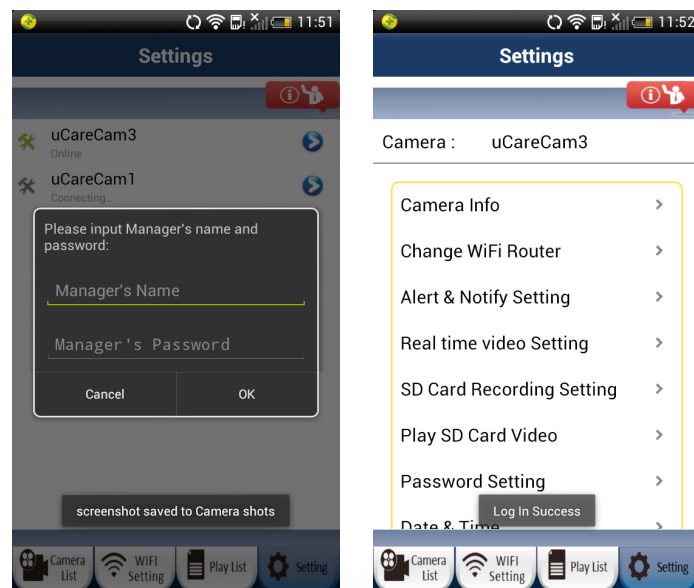
## Settings

Manage IP baby and child monitor (Default manager name: admin , Default Password: 0000)

Only one User can manage a camera that is online and connected to Smartphone APP at any one time.

Here, User can:

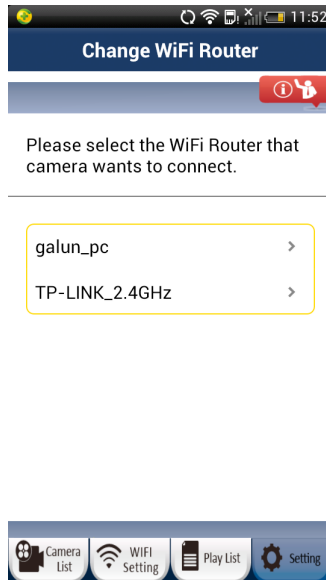
- Check Camera Info
- Change Wi-Fi Router
- Change Alarm Settings – “Warning & Notify Setting”
- Set Real Time Video
- Check SD Card Recording
- Play SD Card Video
- Set Password
- Change Date & Time





## 1) Change Wi-Fi Router

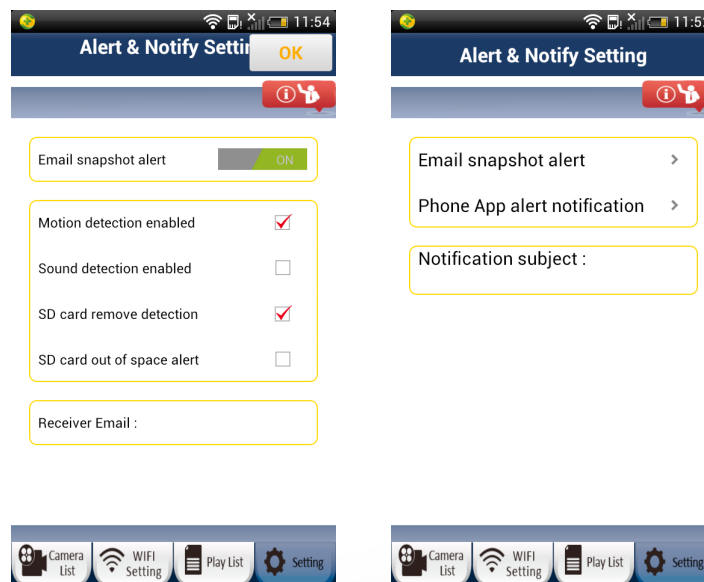
User can remotely switch the camera to connect to a different Wi-Fi Router.

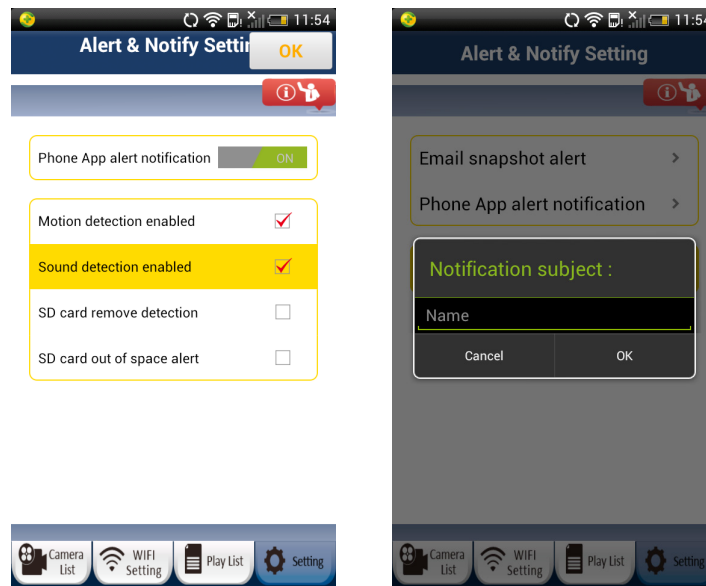


## 2) Alert & Notify Setting/Warning & Notify Setting

The camera has a number of hardware alarm detection possibilities.

User can set the desired trigger and notification. When a new event is generated, the APP will notify the User either through email or through a Phone Push Message.

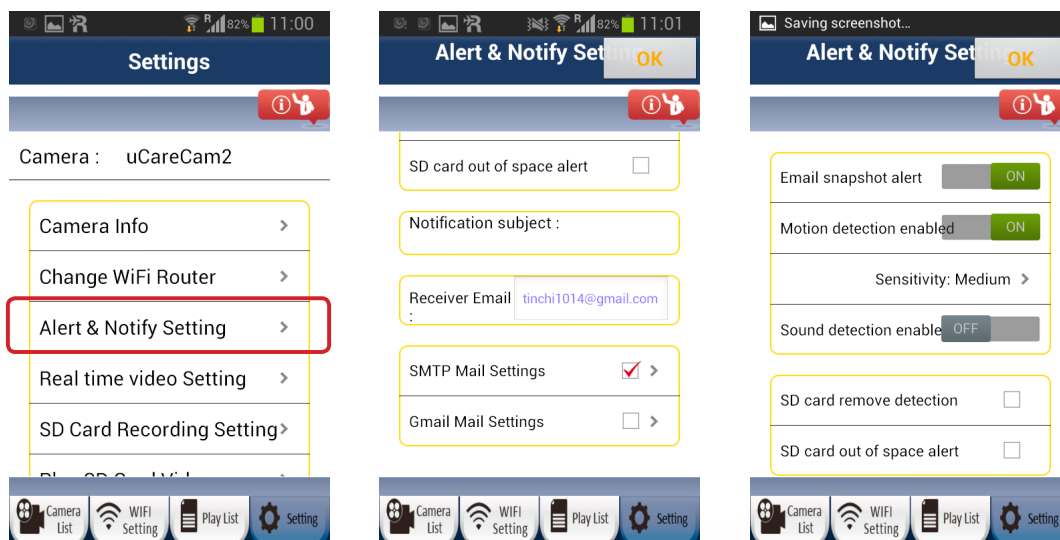




## Set Email Alerts

To setup your email to receive motion/sound/etc. alerts, please login to the “Settings” page with Manager name and password (default: admin/0000).

- 1) Click on “Alert & Notify Setting” or “Warning & Notify Setting”.
- 2) Click on “Email snapshot alert”.
- 3) You will see a variety of options. You can touch and scroll down the page to see more options.



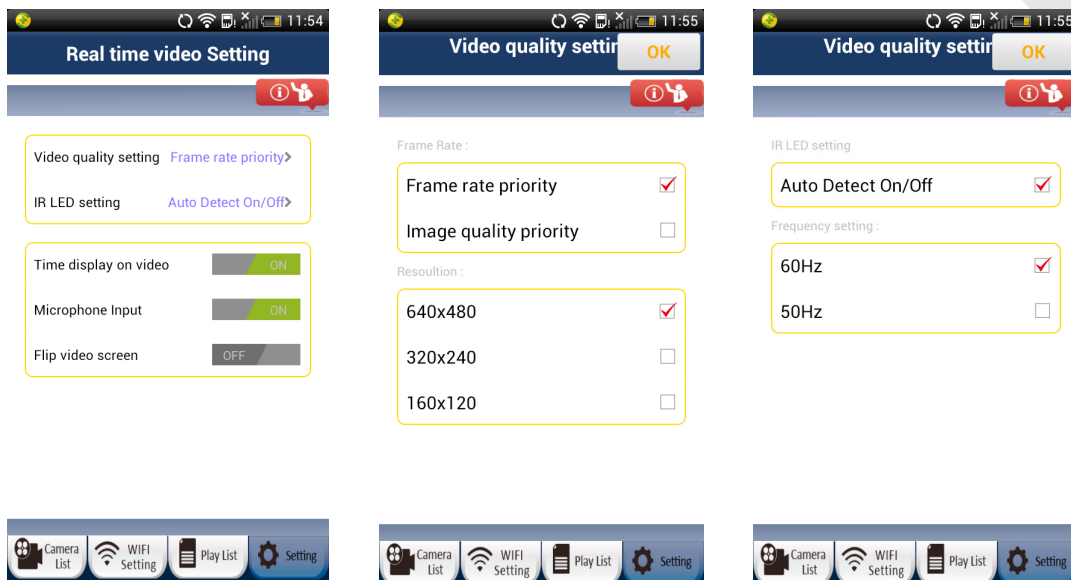
- **Email snapshot alert** – Turn email on/off
- **Motion detection enabled** – Turn motion detection on/off
- **Sensitivity** – Motion detection sensitivity (High, Medium, Low)
- **Sound detection enabled** – Turn sound detection on/off
- **SD card remove detection** – Send alert if SD card is removed
- **SD card out of space alert** – Send alert if SD card is full
- **Notification subject** – Note to be added to email alert (less than 10 characters)
- **Receiver Email** – Email address to send alert to

- **SMTP Mail Settings** – Only either SMTP or Gmail mail settings can be set. Please enter your email provider's SMTP server settings. You may need to contact your email provider for the server settings. Please enter your email address and email password. This account will be used as the "Sender" or "From" for the email alerts.
- **Gmail Mail Settings** – Only either SMTP or Gmail mail settings can be set. For convenience, we have already entered Gmail's SMTP server settings. Please enter your Gmail account email and Gmail password. This account will be used as the "Sender" or "From" for the email alerts.

### 3) Real time video setting

User can adjust the video quality settings based on the status of the network connection. If User does not have adequate video performance, please turn off motion detection and reduce the resolution.

- 1) Frames: The default is motion image detection
- 2) Resolution: The default is 640x480



#### 4) SD Card Recording Setting

User can insert a microSD card into the camera to enable the recording function.

##### Trigger Recording:

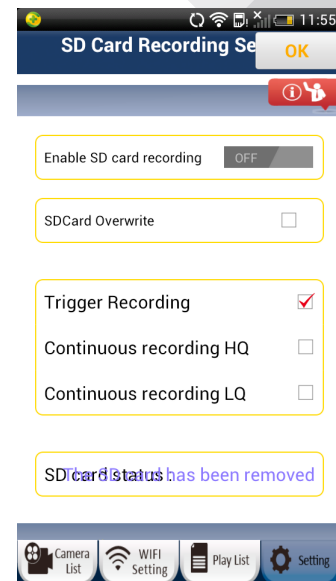
The camera will automatically start recording when a trigger event (motion, sound, and other events) have occurred.

The camera will record for 60 seconds. If another trigger event occurs, the camera will record for another 60 seconds; otherwise it will stop recording.

##### Continuous Recording:

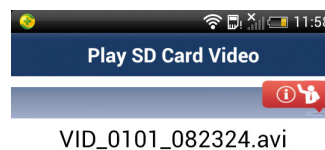
User can setup IP baby and child monitor to constantly record. A video file will be saved every two minutes.

When the microSD card is full, if "SDCard Overwrite" is checked, the program will remove the oldest video files and continue to record. Otherwise, it will stop recording. "HQ" means high quality recording. "LQ" means low quality recording.



#### 5) Play SD Card Video

Click on the Video file to play.



## 6) Password Setting

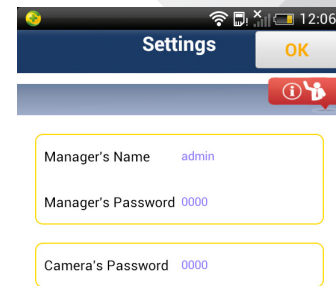
The two-level password management system allows the user to safely and effectively manage the camera.

**First layer: Camera password – able to view the camera.**

**Default value is 0000**

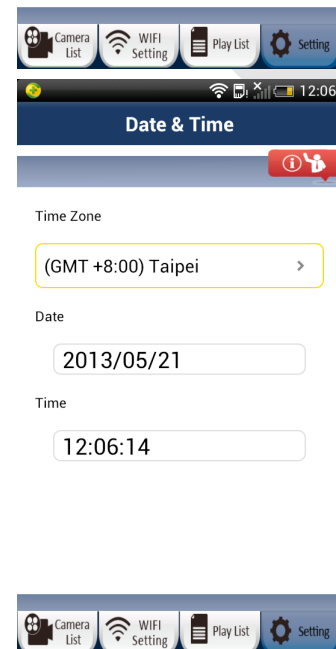
**Second layer: Manager's Name and Password – able to view and set IP baby and child monitor settings.**

**Default value : admin/0000**



## 7) Date & Time

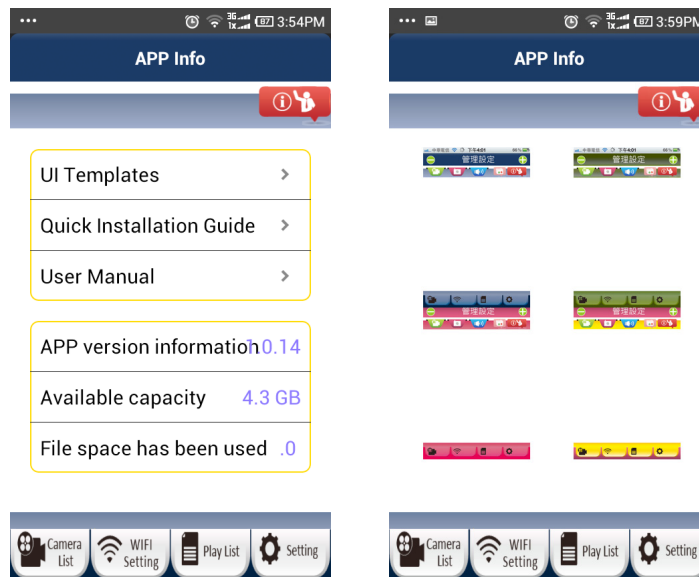
User can only adjust the Time Zone. The Date and Time will be set from the factory and User can not change.



## APP Info

In the APP Info page, User can see options related to the APP, not specific to a camera. To go to APP Info page, please click on  on top right hand of screen. Inside APP Info page, User can:

- Switch the APP user interface skin to a different color template
- See the Quick Installation Guide
- See this Detailed Instruction Manual
- See the APP version number
- See the memory usage of IP baby and child monitor APP on Smartphone.



## J. Update your IP baby and child monitor firmware

1. Download firmware and un-compress the file.
2. Copy "update.bin" to microSD Card top folder, for example H:\.
3. Turn off power to IP baby and child monitor and insert microSD card into IP baby and child monitor microSD slot in back of IP baby and child monitor.
4. Turn power on to IP baby and child monitor.
5. IP baby and child monitor will start reading data from microSD card and upgrade the firmware. LED color will blink Red and Green during this process. It will take about 3 minutes to upgrade the firmware.  
Don't power off the camera or remove the microSD Card during the upgrade process.
6. After firmware upgrade is successful, IP baby and child monitor will automatically reboot and reset all settings.
7. User will now need to reinstall IP baby and child monitor.

## FAQ:

### 1) IP baby and child monitor status LED is Orange.

Why can't my Smartphone connect to IP baby and child monitor?

- a. Does the camera status in Camera List view show "Online"?
  - i. Yes -> Check Smartphone internet connection speed
  - ii. No -> Try to force Reconnect.
    1. To force Reconnect on iOS, click on the right arrow and click on "Reconnect". Click on Camera name once it shows "Online".
    2. To force Reconnect in Android, click and hold on Camera name. A pop-up window will give you options to Reconnect. Click on "Reconnect" then click on Camera name once it shows "Online".



## 2) The live video stream is very slow.

IP baby and child monitor will automatic adjust video streaming speed according to smartphone's internet connection. It will start sending video from a low frame rate and gradually increase the frame rate. It may take 1-2 minutes for the frame rate to stabilize. If performance is still not satisfactory –

- Please ensure motion detection is turned off. "Settings" -> "Alert & Notify Setting" -> "Email snapshot alert" -> "Motion detection enabled" is NOT checked.
- Please reduce the video quality. "Settings" -> "Real time video Setting" -> "Video quality settings"

## 3) What does the LED color stand for?

LED Color	Description
Power on → Green	IPCam booting (15 seconds)
Power on → Green → Red flashing	IPCam loading program (15 seconds)
Red and Green lit alternatively	Router Mode
Fast Green lit	WPS Mode
Green slow flashing	Searching and Connecting to Wi-Fi Router (IP baby and child monitor will reboot automatically every one hour in this status)
Orange	Connected to Wi-Fi Router
Red fast flashing	WPS pairing failed

## 4) My IP baby and child monitor does not connect to the Router

It's possible that there are too many Wi-Fi routers nearby using the same channel and interfere with each other.

- Please move the IP baby and child monitor closer to the Router to ensure a good Wi-Fi signal.
- You may consider to change your Wi-Fi channel number, for example Ch1, Ch6, Ch11.
- Please turn off power to IP baby and child monitor, wait 5 seconds, then turn power on to IP baby and child monitor.
- Please wait ~1 minute, then press WPS/RESET key in back of IP baby and child monitor.
- Please wait ~1-2 minutes. The status LED should be flashing Red and Green. Please try setup again following instructions.
- If status LED does not flash Red & Green, please contact Customer Support.

## 5) How to check your Wi-Fi signal and coverage by Android App - Wi-Fi Analyzer

Ans: There is a free android app "Wi-Fi Analyzer" that can scan and show all Wi-Fi SSID's around. User can change their Wi-Fi channel to avoid interference and get better signal and coverage.

[https://play.google.com/store/apps/details?id=com.farproc.wifi.analyzer&feature=search\\_result](https://play.google.com/store/apps/details?id=com.farproc.wifi.analyzer&feature=search_result)

## 6) What is the default account name and password?

Ans: Default password for IPCam is "0000", default manager account is "admin", password is "0000"

**7) Why can't IP baby and child monitor connect with Wi-Fi Router using WPS Mode?**

- a. Make sure Router's WPS function is enabled.
- b. Please try Router model if WPS mode setup failed.

**8) What is the frequency of email alert and smartphone notify alert?**

Ans: Once motion or sound detection is triggered, then IP baby and child monitor will send email and phone notify immediately. If the trigger event continually happens, then the email and phone notify will send out on a three minute interval.

The trigger event ends after 10 seconds if there is no continual motion or sound.

The minimum interval for email and phone notify will be 11 seconds.

**9) What is the estimate recording size of video per hour (video format .AVI)**

VGA 640x480	Continuous HQ (20fps)	Continuous LQ (10fps)
Frame Rate Priority	4GB/Hour	2GB/Hour
Image Quality Priority	8GB/Hour	4GB/Hour

**10) In iOS, I cannot see the IP baby and child monitor Router "Wi-Fi-cam-p2p".**

After some time, the IP baby and child monitor Router will no longer broadcast the SSID "Wi-Fi-cam-p2p". Please reset IP baby and child monitor by pressing the WPS/RESET button for ~10 seconds. Then please take note of the LED color. When the LED turns green/red, then you should see the SSID being broadcast again.

**Maintenance**

Clean the product only with a dry cloth.  
Do not use cleaning solvents or abrasives.

**Warranty**

Any changes and/or modifications to the product will void the warranty. We cannot accept any liability for damage caused by incorrect use of this product.

**Disclaimer**

Designs and specifications are subject to change without notice. All logos, brands and product names are trademarks or registered trademarks of their respective holders and are hereby recognized as such.

**Disposal**

- This product is designated for separate collection at an appropriate collection point.  
Do not dispose of this product with household waste.
- For more information, contact the retailer or the local authority responsible for waste management.

This product has been manufactured and supplied in compliance with all relevant regulations and directives, valid for all member states of the European Union. It also complies to all applicable specifications and regulations in the country of sales. Formal documentation is available upon request. This includes, but is not limited to: Declaration of Conformity (and product identity), Material Safety Data Sheet, product test report.

Please contact our customer service desk for support:

via website: <http://www.nedis.com/en-us/contact/contact-form.htm>

via e-mail: [service@nedis.com](mailto:service@nedis.com)

via telephone: +31 (0)73-5993965 (during office hours)

NEDIS B.V., De Tweeling 28, 5215 MC 's-Hertogenbosch, THE NETHERLANDS