

EN-9320SFP+ EN-9320TX-E

Quick Installation Guide

08-2017 / v1.0

Edimax Technology Co., Ltd.

No. 278, Xinhua 1st Rd., Neihu Dist., Taipei City, Taiwan

Email: support@edimax.com.tw

Edimax Technology Europe B.V.

Fijenhof 2, 5652 AE Eindhoven, The Netherlands

Email: support@edimax.nl

Edimax Computer Company

3350 Scott Blvd., Bldg.15 Santa Clara, CA 95054, USA

Live Tech Support: 1(800) 652-6776

Email: support@edimax.com

I. Product Information.....	1
I-1. Package Contents	1
I-2. LED Status	1
I-3. System Requirements.....	1
II. Hardware Installation.....	2
III. Setup Wizard.....	3
III-1. Driver Installation	3
III-2. Driver Uninstallation.....	8

Multi-Language Quick Installation Guide (QIG) on the CD

Čeština: Českého průvodce rychlou instalací naleznete na přiloženém CD s ovladači

Deutsch: Finden Sie bitte das deutsche S.A.L. beiliegend in der Treiber CD

Español: Incluido en el CD el G.R.I. en Español.

Français: Veuillez trouver l'français G.I.R ci-joint dans le CD

Italiano: Incluso nel CD il Q.I.G. in Italiano.

Magyar: A magyar telepítési útmutató megtalálható a mellékelt CD-n

Nederlands: De nederlandse Q.I.G. treft u aan op de bijgesloten CD

Polski: Skrócona instrukcja instalacji w języku polskim znajduje się na załączonej płycie CD

Português: Incluído no CD o G.I.R. em Portugues

Русский: Найдите Q.I.G. на русском языке на приложенном CD

Türkçe: Ürün ile beraber gelen CD içinde Türkçe Hızlı Kurulum Kılavuzu'nu bulabilirsiniz

Українська: Для швидкого налаштування Вашого пристрою, будь ласка, ознайомтесь з інструкцією на CD

I. Product Information

The EN-9320SFP+/EN-9320TX-E is a high-performance 10 Gigabit Ethernet PCI Express Adapter for Servers.

I-1. Package Contents



EN-9320SFP+



EN-9320TX-E

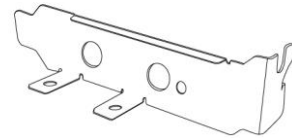
Or



CD-ROM



QIG



Low Profile PCIe Bracket

I-2. LED Status

LED	Status	Definition
SPEED	Green	10Gbps
	Amber	5Gbps / 2.5Gbps / 1Gbps
	Off	100Mbps
LNK/ACT	Solid Green	Link established
	Flashing Green	Activity or data transmitting
	Off	No Link

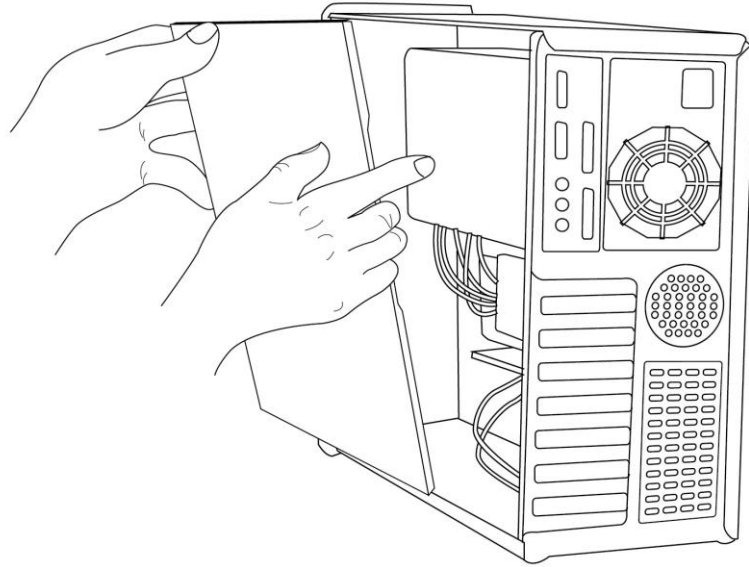
I-3. System Requirements

- Windows 7/8/8.1/10, windows Server 2012, 2012 R2, 2008, 2008 R2
- Hard Disk: 100MB
- CD-ROM Drive
- Empty PCI Express 2.0 Slot (x4 or higher)
- 10 Gigabit SFP+ transceiver (not compatible with 10/100/1000 Mbps SFP transceivers)

II. Hardware Installation

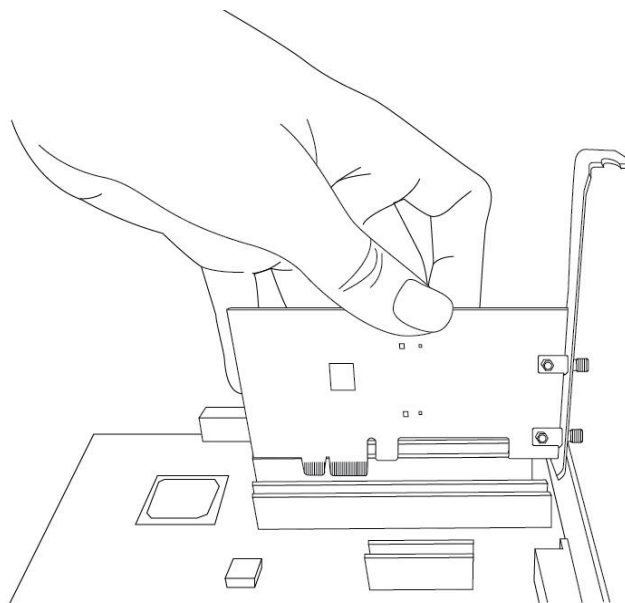
1. Switch off and unplug your computer and remove the cover.

 **Refer to your computer's user manual if you are unsure how to remove the cover and locate a PCIe slot.**

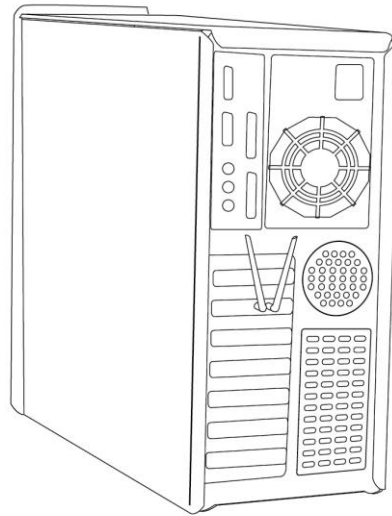


2. Identify your empty PCIe slot and remove the associated metal bay cover on the back of the computer by unscrewing it. Insert the Ethernet card into the empty PCIe slot.

 **A Low Profile PCIe bracket is also included in the package contents.**



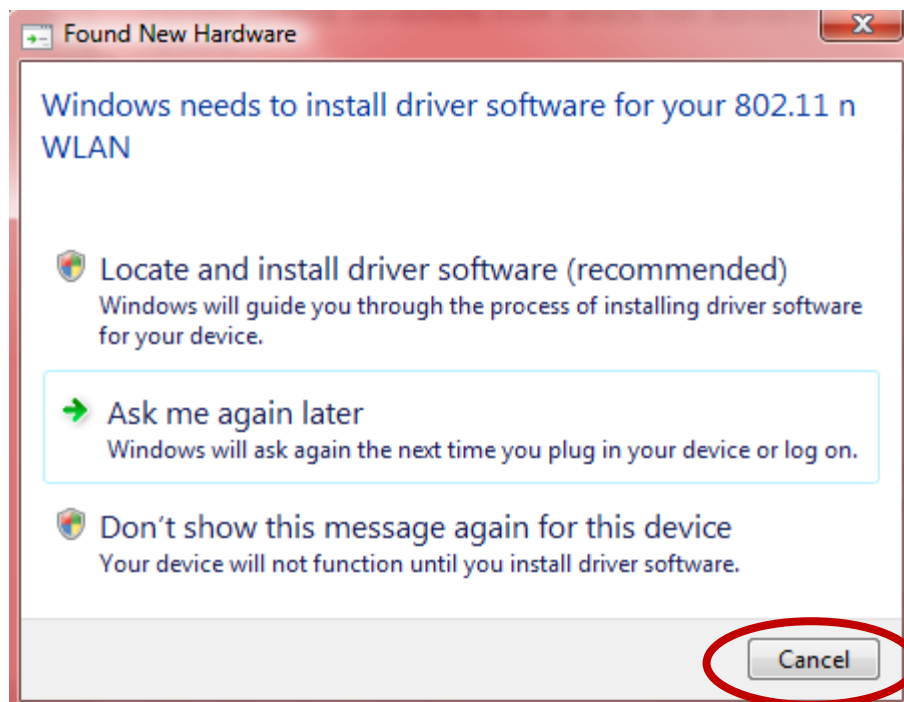
- Secure the card in place by screwing the metal bay screw, which you removed in the previous step, back into place. Reattach the cover on your computer.



III. Setup Wizard

III-1. Driver Installation


- Switch your computer on and if a Windows “Found New Hardware” wizard opens, please close it.



2. Insert the included CD-ROM into the CD drive of your computer.

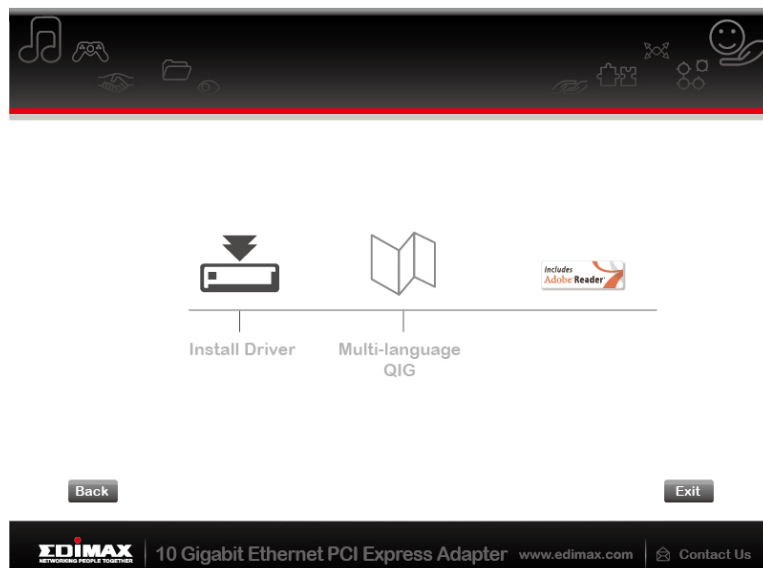
 **The setup wizard is also available for download from the Edimax website.**

3. The setup wizard will open as shown below. Click on your wireless PCIe adapter to continue.

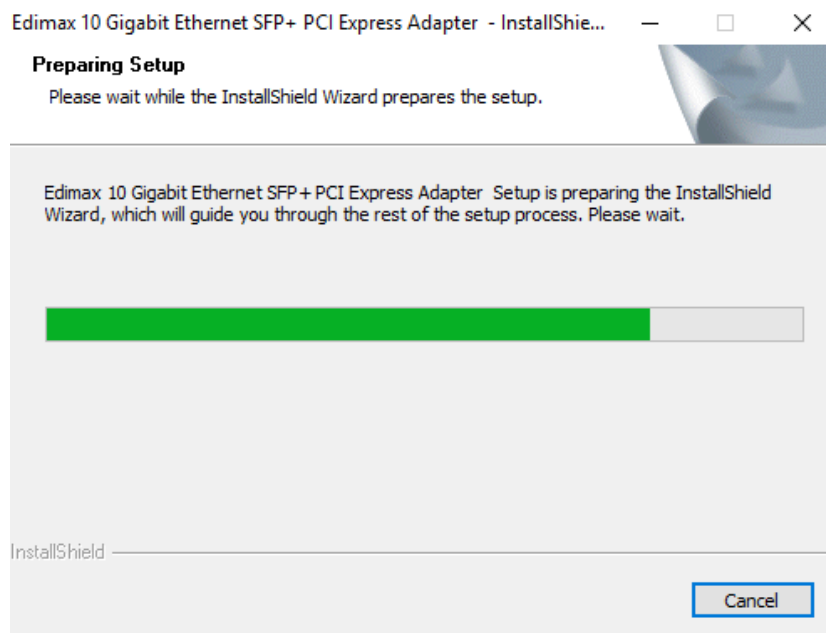
 **If the CD doesn't auto-run or if you downloaded the setup wizard, please browse to the "Autorun" folder of the CD.**



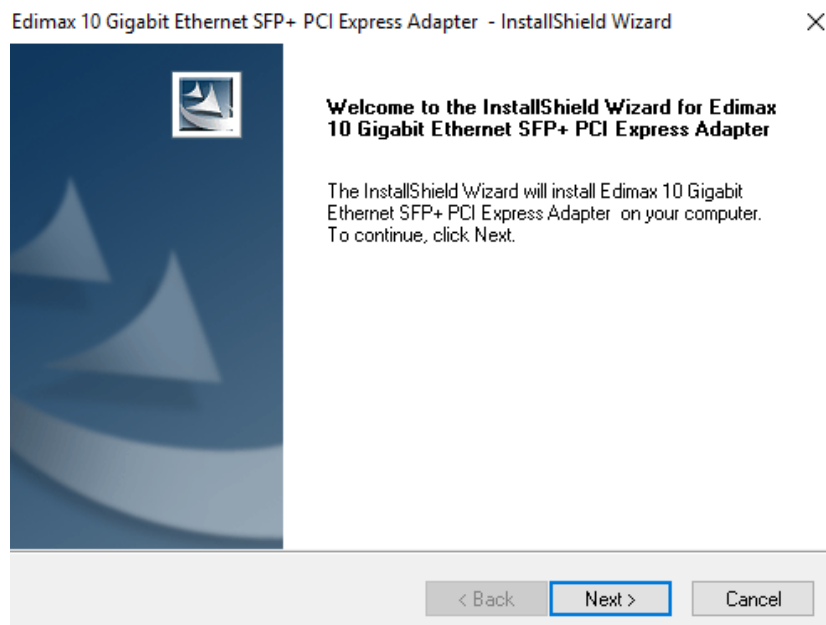
4. Click "Install Driver" to continue to install the drivers for your EN-9320SFP+/EN-9320TX-E.



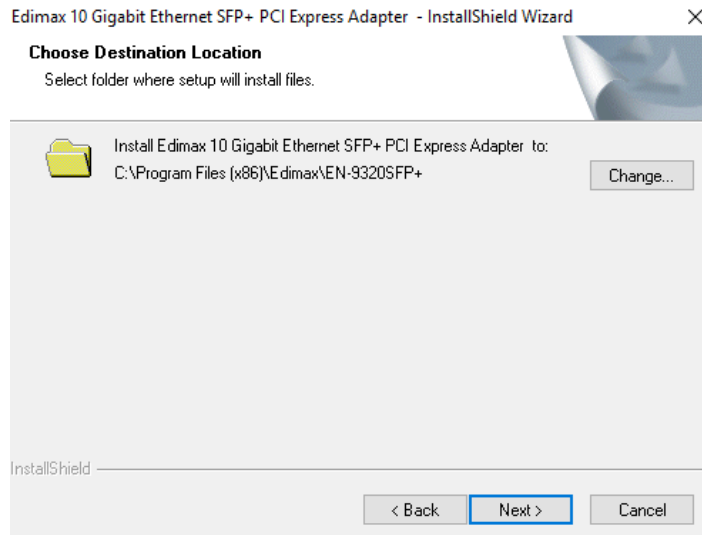
5. Please wait while the setup wizard prepares to install the drivers.



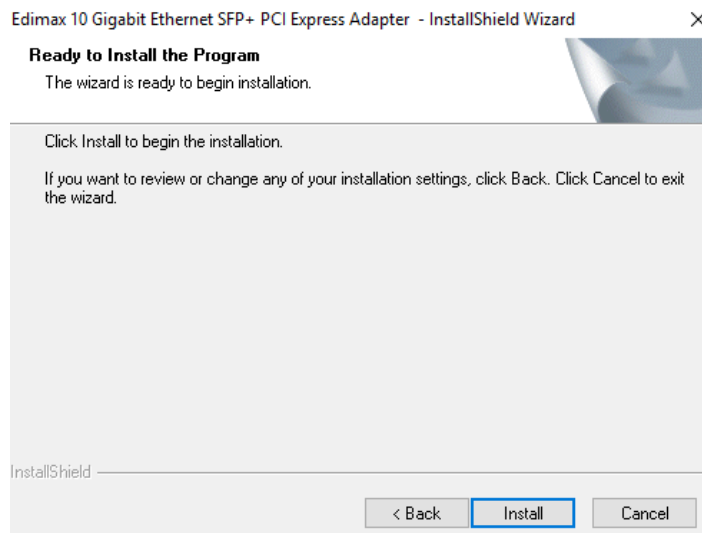
6. Click “Next” to install the driver.



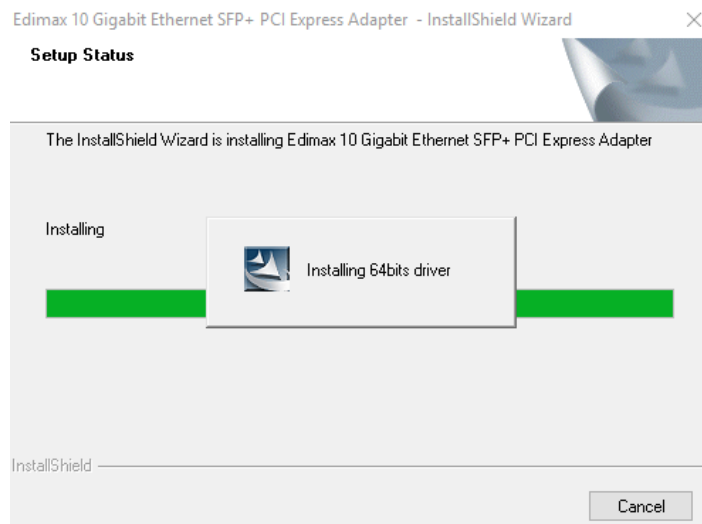
7. Select a folder where setup will install files. Click “Next” to confirm.



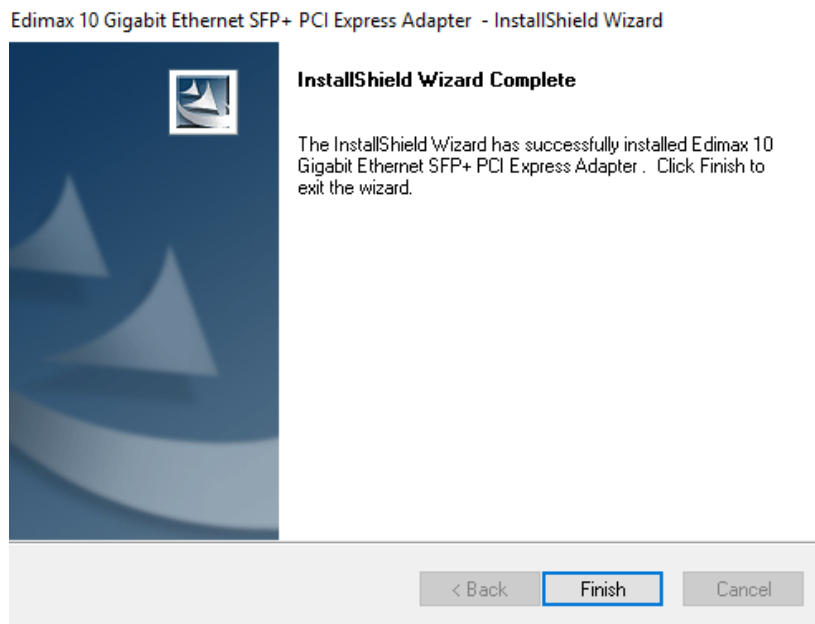
8. Click “Install” to begin the installation.



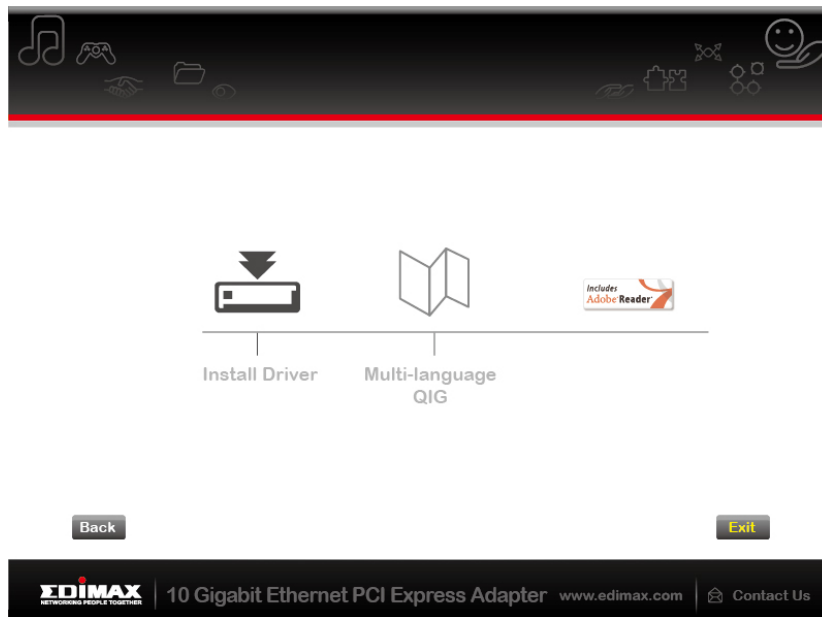
9. Please wait while the driver is installing.



10. When the installation is complete, click “Finish” to exit.



11. Click “Exit” to close the setup wizard.



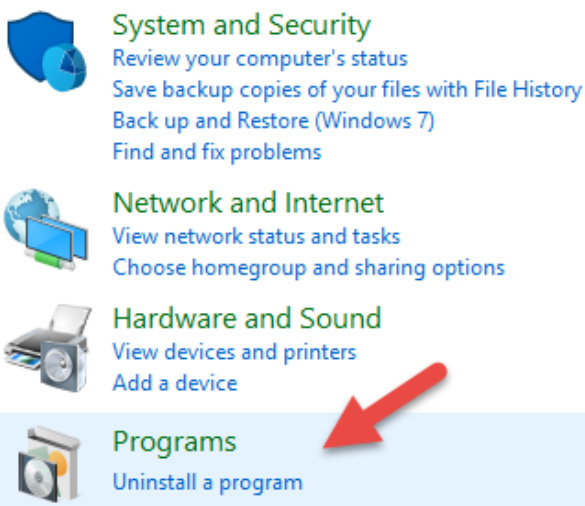
The multi-language QIG is also included on the CD-ROM. To open it click “Multi-language QIG”.

III-2. Driver Uninstallation

III-2-1. Windows Vista, 7, 8.1 & 10

1. Open Control Panel using the Start menu or Search function.
2. Select **Uninstall a program** under the **Programs** category.

Adjust your computer's settings

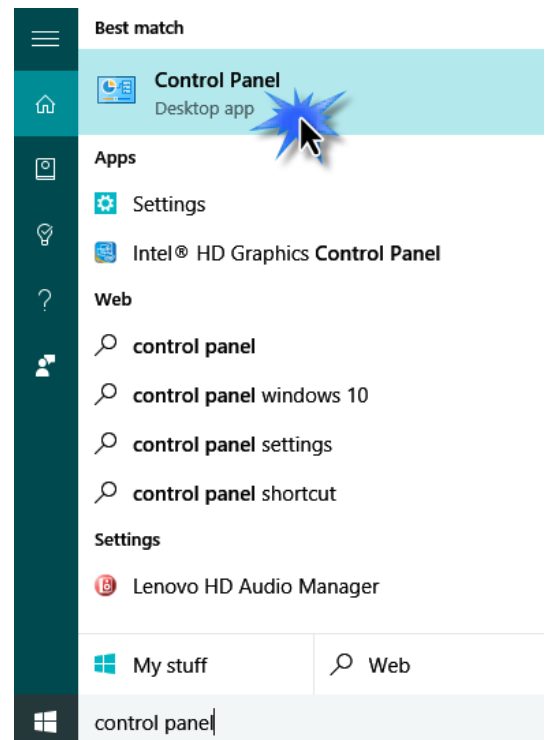


System and Security
Review your computer's status
Save backup copies of your files with File History
Back up and Restore (Windows 7)
Find and fix problems

Network and Internet
View network status and tasks
Choose homegroup and sharing options

Hardware and Sound
View devices and printers
Add a device

Programs
Uninstall a program



Best match

Control Panel
Desktop app

Apps

- Settings
- Intel® HD Graphics Control Panel

Web

- control panel
- control panel windows 10
- control panel settings
- control panel shortcut

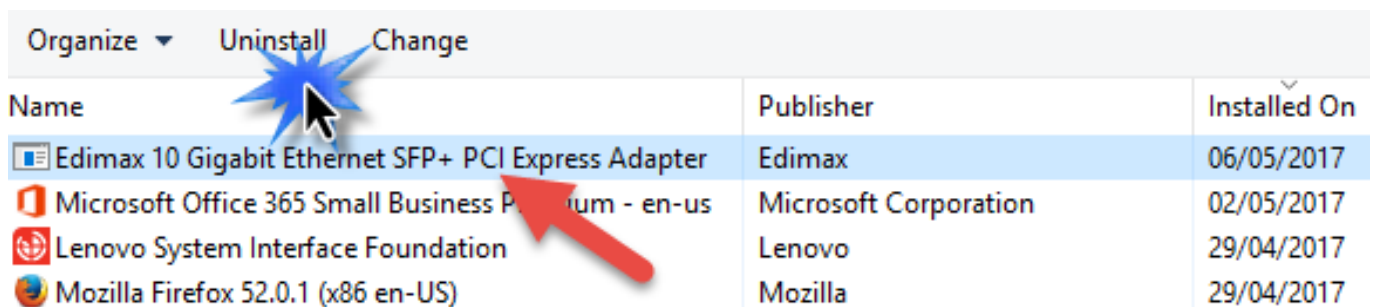
Settings

- Lenovo HD Audio Manager

My stuff Web

control panel

3. Select **Edimax** (or similar) and click **Uninstall**.



Name	Publisher	Installed On
Edimax 10 Gigabit Ethernet SFP+ PCI Express Adapter	Edimax	06/05/2017
Microsoft Office 365 Small Business Premium - en-us	Microsoft Corporation	02/05/2017
Lenovo System Interface Foundation	Lenovo	29/04/2017
Mozilla Firefox 52.0.1 (x86 en-US)	Mozilla	29/04/2017

COPYRIGHT

Copyright © Edimax Technology Co., Ltd. all rights reserved. No part of this publication may be reproduced, transmitted, transcribed, stored in a retrieval system, or translated into any language or computer language, in any form or by any means, electronic, mechanical, magnetic, optical, chemical, manual or otherwise, without the prior written permission from Edimax Technology Co., Ltd.

Edimax Technology Co., Ltd. makes no representations or warranties, either expressed or implied, with respect to the contents hereof and specifically disclaims any warranties, merchantability, or fitness for any particular purpose. Any software described in this manual is sold or licensed as is. Should the programs prove defective following their purchase, the buyer (and not this company, its distributor, or its dealer) assumes the entire cost of all necessary servicing, repair, and any incidental or consequential damages resulting from any defect in the software. Edimax Technology Co., Ltd. reserves the right to revise this publication and to make changes from time to time in the contents hereof without the obligation to notify any person of such revision or changes.

The product you have purchased and the setup screen may appear slightly different from those shown in this QIG. The software and specifications are subject to change without notice. Please visit our website www.edimax.com for updates. All brand and product names mentioned in this manual are trademarks and/or registered trademarks of their respective holders.

Federal Communication Commission Interference Statement

This equipment has been tested and found to comply with the limits for a Class B digital device, pursuant to Part 15 of the FCC Rules. These limits are designed to provide reasonable protection against harmful interference in a residential installation. This equipment generates, uses and can radiate radio frequency energy and, if not installed and used in accordance with the instructions, may cause harmful interference to radio communications. However, there is no guarantee that interference will not occur in a particular installation. If this equipment does cause harmful interference to radio or television reception, which can be determined by turning the equipment off and on, the user is encouraged to try to correct the interference by one or more of the following measures:

- Reorient or relocate the receiving antenna.
- Increase the separation between the equipment and receiver.
- Connect the equipment into an outlet on a circuit different from that to which the receiver is connected.
- Consult the dealer or an experienced radio/TV technician for help.

FCC Caution: Any changes or modifications not expressly approved by the party responsible for compliance could void the user's authority to operate this equipment.

This device complies with Part 15 of the FCC Rules. Operation is subject to the following two conditions: (1) This device may not cause harmful interference, and (2) this device must accept any interference received, including interference that may cause undesired operation.

This device and its antenna(s) must not be co-located or operating in conjunction with any other antenna or transmitter.

EU Declaration of Conformity

- English:** This equipment is in compliance with the essential requirements and other relevant provisions of Directive 2014/30/EU.
- Français:** Cet équipement est conforme aux exigences essentielles et autres dispositions de la directive 2014/30/EU.
- Čeština:** Toto zařízení je v souladu se základními požadavky a ostatními příslušnými ustanoveními směrnice 2014/30/EU.
- Polski:** Urządzenie jest zgodne z ogólnymi wymaganiami oraz szczególnymi warunkami określonymi Dyrektywą UE 2014/30/EU.
- Română:** Acest echipament este în conformitate cu cerințele esențiale și alte prevederi relevante ale Directivei 2014/30/EU.
- Русский:** Это оборудование соответствует основным требованиям и положениям Директивы 2014/30/EU.
- Magyar:** Ez a berendezés megfelel az alapvető követelményeknek és más vonatkozó irányelveknek (2014/30/EU).
- Türkçe:** Bu cihaz 2014/30/EU. direktifleri zorunlu istekler ve diğer hükümlerle ile uyumludur.
- Українська:** Обладнання відповідає вимогам і умовам директиви 2014/30/EU.
- Slovenčina:** Toto zariadenie spĺňa základné požiadavky a ďalšie príslušné ustanovenia smerníc 2014/30/EU.
- Deutsch:** Dieses Gerät erfüllt die Voraussetzungen gemäß den Richtlinien 2014/30/EU.
- Español:** El presente equipo cumple los requisitos esenciales de la Directiva 2014/30/EU.
- Italiano:** Questo apparecchio è conforme ai requisiti essenziali e alle altre disposizioni applicabili della Direttiva 2014/30/EU.
- Nederlands:** Dit apparaat voldoet aan de essentiële eisen en andere van toepassing zijnde bepalingen van richtlijn 2014/30/EU.
- Português:** Este equipamento cumpre os requisitos essenciais da Directiva 2014/30/EU.
- Norsk:** Dette utstyret er i samsvar med de viktigste kravene og andre relevante regler i Direktiv 2014/30/EU.
- Svenska:** Denna utrustning är i överensstämmelse med de väsentliga kraven och övriga relevanta bestämmelser i direktiv 2014/30/EU.
- Dansk:** Dette udstyr er i overensstemmelse med de væsentligste krav og andre relevante forordninger i direktiv 2014/30/EU.
- suomen kieli:** Tämä laite täyttää direktiivien 2014/30/EU. oleelliset vaatimukset ja muut asiaankuuluvat määräykset.

FOR USE IN 



WEEE Directive & Product Disposal



At the end of its serviceable life, this product should not be treated as household or general waste. It should be handed over to the applicable collection point for the recycling of electrical and electronic equipment, or returned to the supplier for disposal.

Declaration of Conformity

We, Edimax Technology Co., Ltd., declare under our sole responsibility, that the equipment described below complies with the requirements of the European R&TTE directives.

Equipment: 10GbE SFP+ / 10GbE Network Adapter Card

Model No.: EN-9320SFP+ / EN-9320TX-E

The following European standards for essential requirements have been followed:

Directives 2014/30/EU

EN 55032:2012/AC:2013 Class B

EN 61000-3-2:2014

EN 61000-3-3:2013

EN 55024:2010

EN 61000-4-2:2009 (ESD)

EN 61000-4-3:2006/A1:2008/A2:2010 (RS)

EN 61000-4-4:2012 (EFT)

EN 61000-4-5:2014 (Surge)

EN 61000-4-6:2014 (CS)

EN 61000-4-8:2010 (PFMF)

EN 61000-4-11:2004 (DIP)

Edimax Technology Europe B.V.

Fijenhof 2,

5652 AE Eindhoven,

The Netherlands

Signature:

Printed Name: Vivian Ma

Title: Director

Edimax Technology Europe B.V.

a company of :

Edimax Technology Co., Ltd.

No. 278, Xinhua 1st Rd., Neihu

Dist., Taipei City, Taiwan



Date of Signature: April, 2017

Signature: 

Printed Name: Albert Chang

Title: Director

Edimax Technology Co., Ltd.



ΣDIMAX
NETWORKING PEOPLE TOGETHER