

EN-9320SFP+ EN-9320TX-E

Guía de instalación rápida

08-2017 / v1.0

Edimax Technology Co., Ltd.

No. 278, Xinhua 1st Rd., Neihu Dist., Taipei City, Taiwan

Email: support@edimax.com.tw

Edimax Technology Europe B.V.

Fijenhof 2, 5652 AE Eindhoven, The Netherlands

Email: support@edimax.nl

Edimax Computer Company

3350 Scott Blvd., Bldg.15 Santa Clara, CA 95054, USA

Live Tech Support: 1(800) 652-6776

Email: support@edimax.com

I. Información acerca del producto	1
I-1. Volumen de suministro.....	1
I-2. Estado de los LEDS	1
I-3. Requisitos del sistema	1
II. Instalación del dispositivo	2
III. Asistente de configuración	3
III-1. Instalación del controlador	3
III-2. Desinstalación del controlador	8
III-2-1. Windows Vista, 7, 8.1 y 10.....	8

Multi-Language Quick Installation Guide (QIG) on the CD

Čeština: Českého průvodce rychlou instalací naleznete na přiloženém CD s ovladači

Deutsch: Finden Sie bitte das deutsche S.A.L. beiliegend in der Treiber CD

Español: Incluido en el CD el G.R.I. en Español.

Français: Veuillez trouver l'français G.I.R ci-joint dans le CD

Italiano: Incluso nel CD il Q.I.G. in Italiano.

Magyar: A magyar telepítési útmutató megtalálható a mellékelt CD-n

Nederlands: De nederlandse Q.I.G. treft u aan op de bijgesloten CD

Polski: Skrócona instrukcja instalacji w języku polskim znajduje się na załączonej płycie CD

Português: Incluído no CD o G.I.R. em Portugues

Русский: Найдите Q.I.G. на русском языке на приложенном CD

Türkçe: Ürün ile beraber gelen CD içinde Türkçe Hızlı Kurulum Kılavuzu'nu bulabilirsiniz

Українська: Для швидкого налаштування Вашого пристрою, будь ласка, ознайомтесь з інструкцією на CD

I. Información acerca del producto

El EN-9320SFP+/EN-9320TX-E es un adaptador para servidores Ethernet PCI Express 10 Gigabit de alto rendimiento.

I-1. Volumen de suministro



EN-9320SFP+



EN-9320TX-E

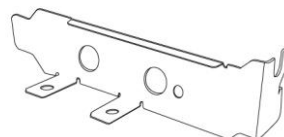
O



CD-ROM



Guí



Soporte de perfil bajo PCIe

I-2. Estado de los LEDS


LED	Estado	Definición
VELOCIDAD	Verde	10 Gbps
	Ámbar	5 Gbps / 2.5 Gbps / 1 Gbps
	Apagado	100 Mbps
LNK/ACT	Verde fijo	Enlace establecido
	Verde parpadeante	Actividad o transmisión de datos
	Apagado	Ningún enlace

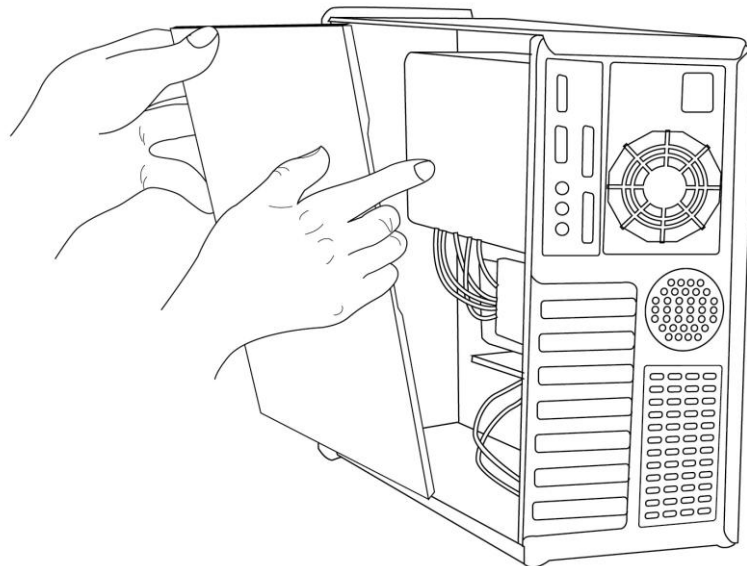
I-3. Requisitos del sistema

- Windows 7/8/8.1/10, Windows Server 2012, 2012 R2, 2008, 2008 R2
- Disco duro: 100 MB
- Unidad CD-ROM
- Ranura PCI Express 2.0 (4 o superior) vacía
- Transceptor de 10 Gigabit SFP+ (no compatible con transceptores SFP de 10/100/1000 Mbps)

II. *Instalación del dispositivo*

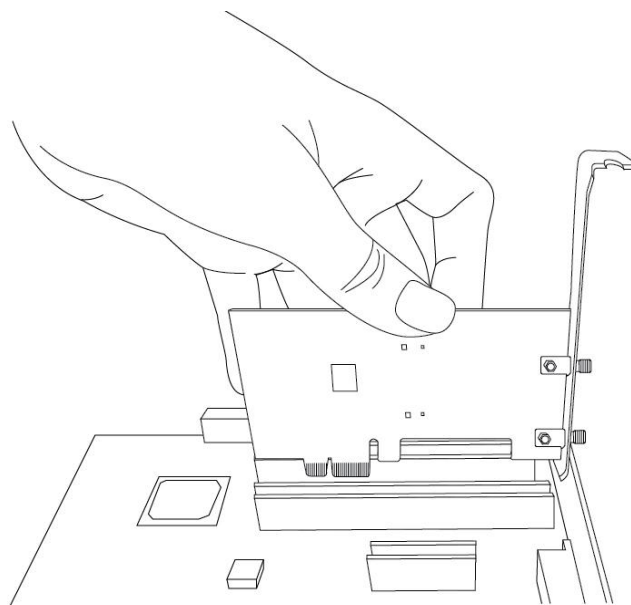
1. Apague y desenchufe el ordenador y extraiga la tapa.

 **Consulte el manual de usuario de su ordenador si no está seguro de cómo quitar la tapa y colocar la ranura PCIe.**

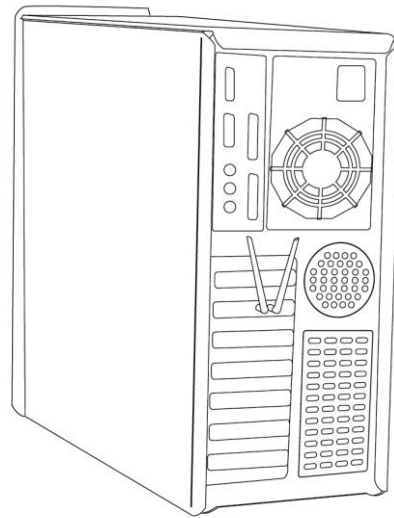


2. Identifique la ranura PCIe vacía y extraiga la tapa de la bahía metálica correspondiente de la parte trasera del ordenador desatornillándola. Inserte la tarjeta Ethernet en la ranura PCIe vacía.

 **El suministro incluye un soporte de perfil bajo PCIe.**



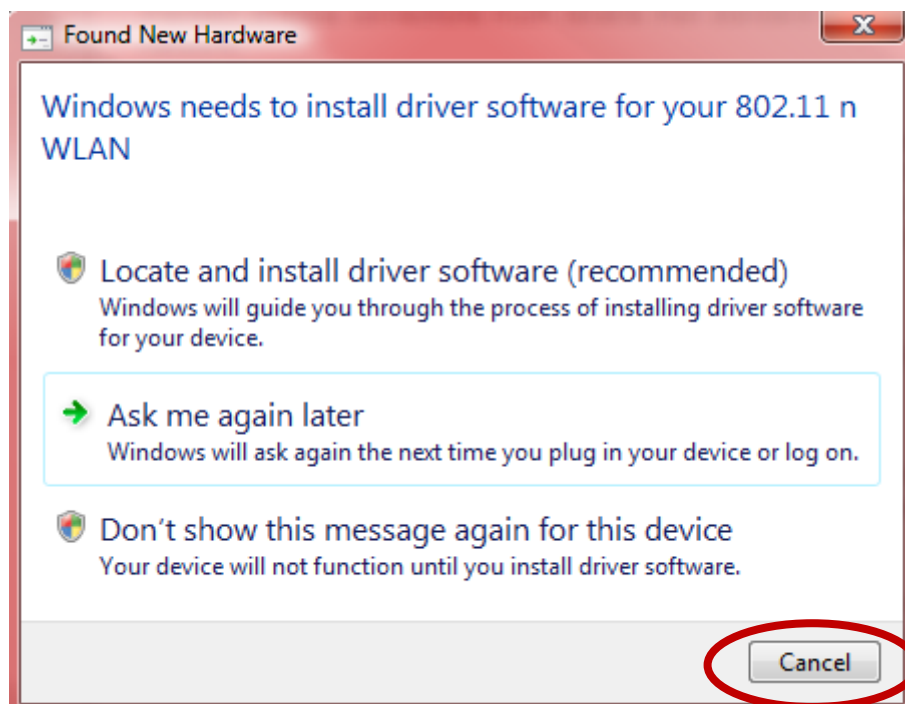
3. Fije la tarjeta en posición volviendo a atornillar los tornillos de la bahía metálica que retiró en el paso anterior. Vuelva a colocar la tapa del ordenador.



III. Asistente de configuración

III-1. Instalación del controlador

1. Encienda el ordenador y si se abre el asistente de Windows “Nuevo hardware encontrado”, ciérrelo.



2. Introduzca el CD-ROM suministrado en la unidad de CD de su ordenador.

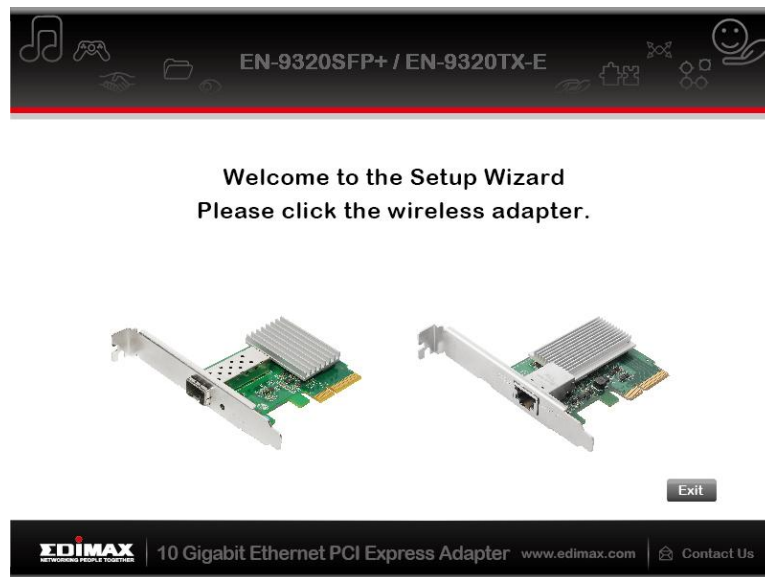


El asistente de configuración también se puede descargar del sitio web de Edimax.

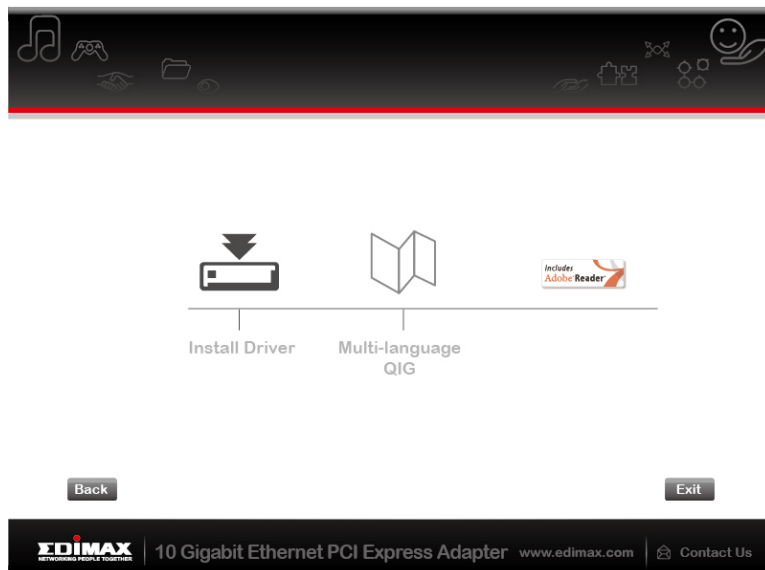
3. El asistente de instalación se abrirá como se muestra abajo. Haga clic en adaptador inalámbrico PCIe para continuar.



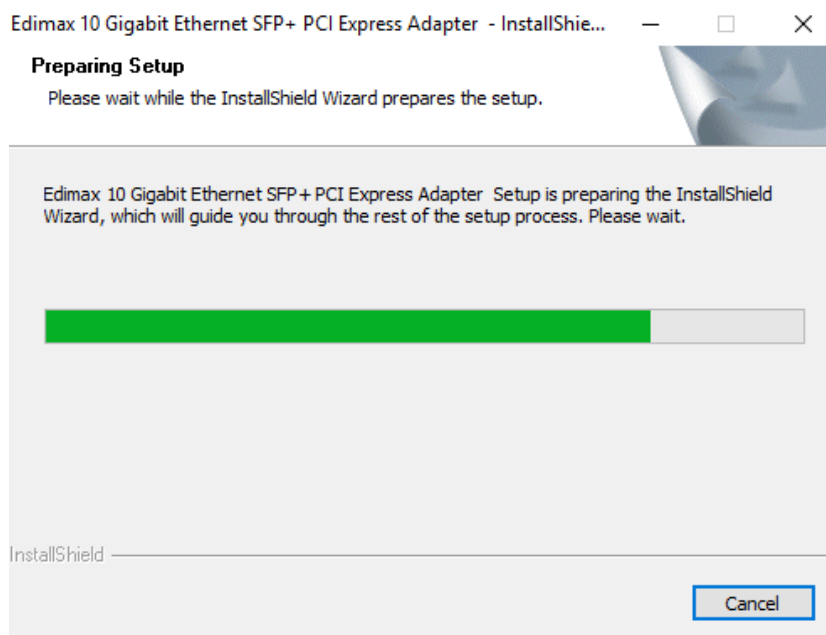
Si el CD no se ejecuta automáticamente o si usted descargó el asistente de instalación, busque la carpeta "Autorun" en el CD.



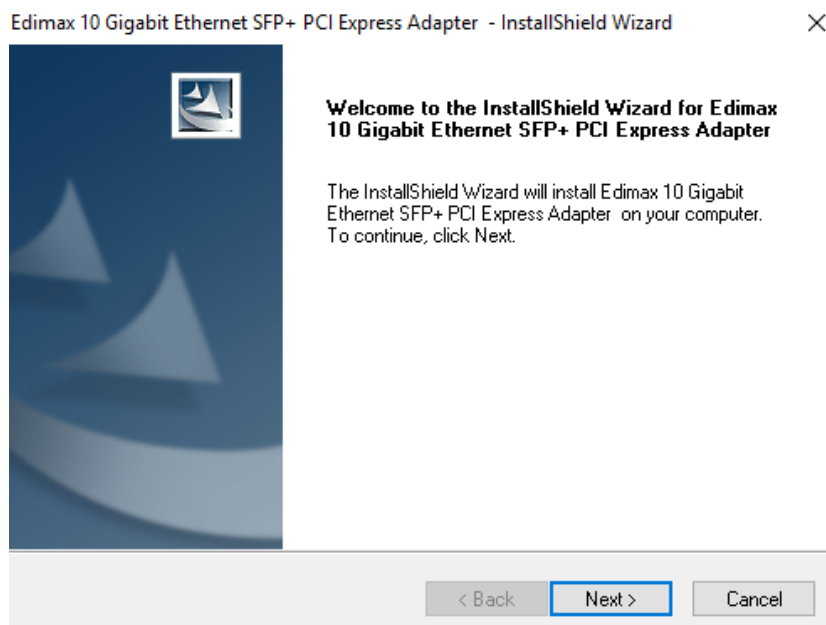
4. Haga clic en "Instalar controlador" para instalar los controladores del EN-9320SFP+/EN-9320TX-E.



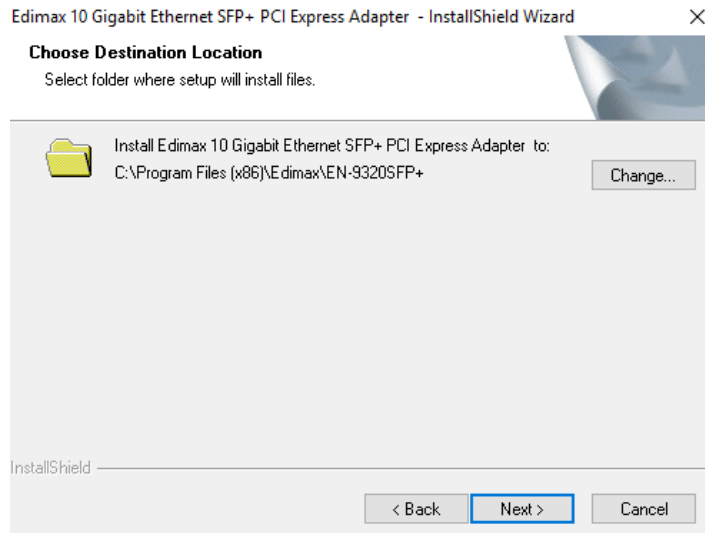
5. Espere a que el asistente de instalación se prepare para instalar los controladores.



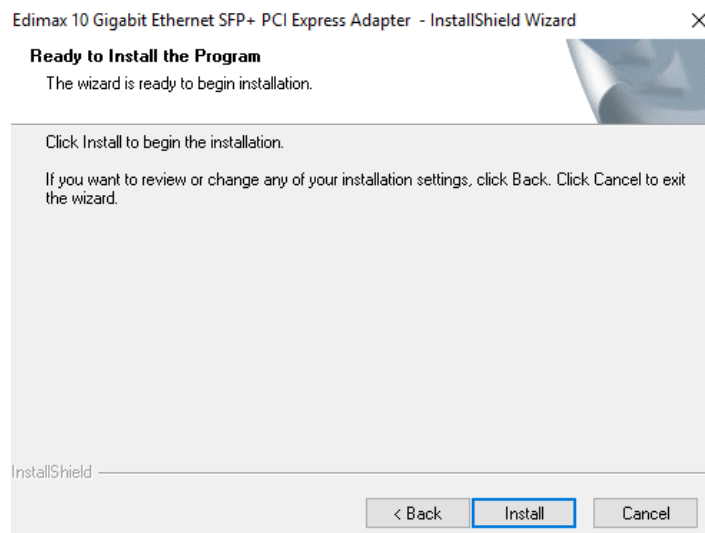
6. Haga clic en “Siguiete” para instalar el controlador.



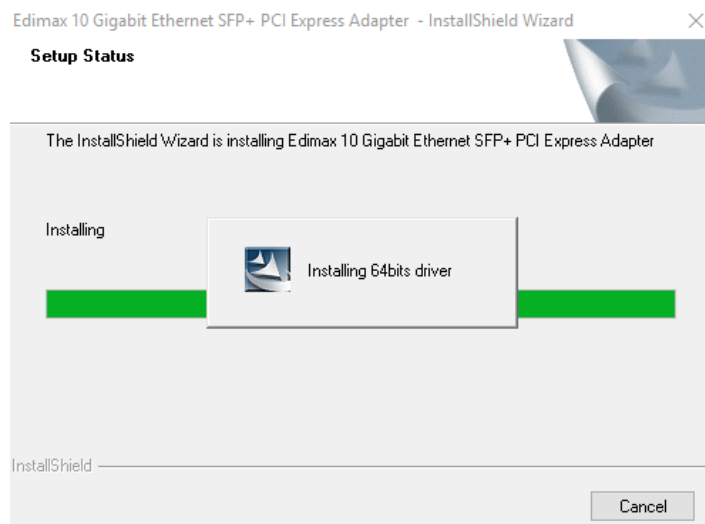
7. Seleccione la carpeta donde desea guardar los archivos de instalación. Pulse “Siguiete” para confirmar.



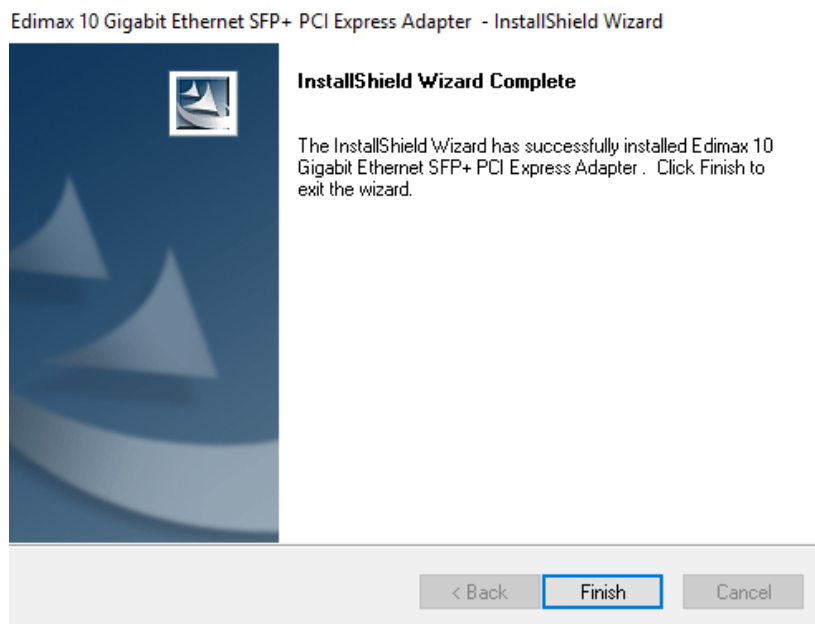
8. Pulse “Instalar” para iniciar la instalación.



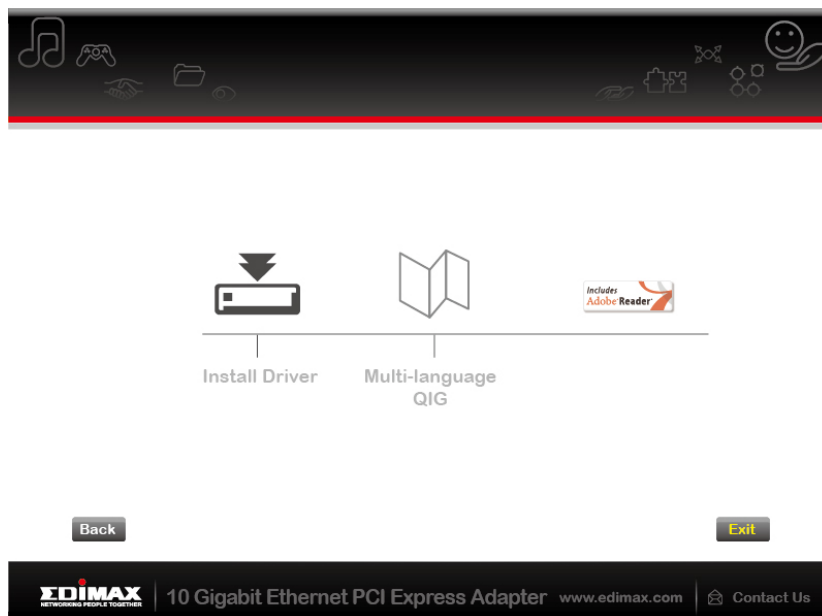
9. Espere a que se instale el controlador.



10. Una vez terminada la instalación, pulse “Finalizar” para salir.



11. Pulse "Salir" para cerrar el asistente de instalación.



En el CD-ROM también está incluida la guía de instalación rápida multilingüe. Para abrirla, haga clic en “Guía de instalación rápida multilingüe”.

III-2. Desinstalación del controlador

III-2-1. Windows Vista, 7, 8.1 y 10

1. Abra el panel de control usando el menú Inicio o la función Buscar.
2. Seleccione **Desinstalar un programa** en la categoría **Programas**.

Adjust your computer's settings



System and Security

Review your computer's status
Save backup copies of your files with File History
Back up and Restore (Windows 7)
Find and fix problems



Network and Internet

View network status and tasks
Choose homegroup and sharing options



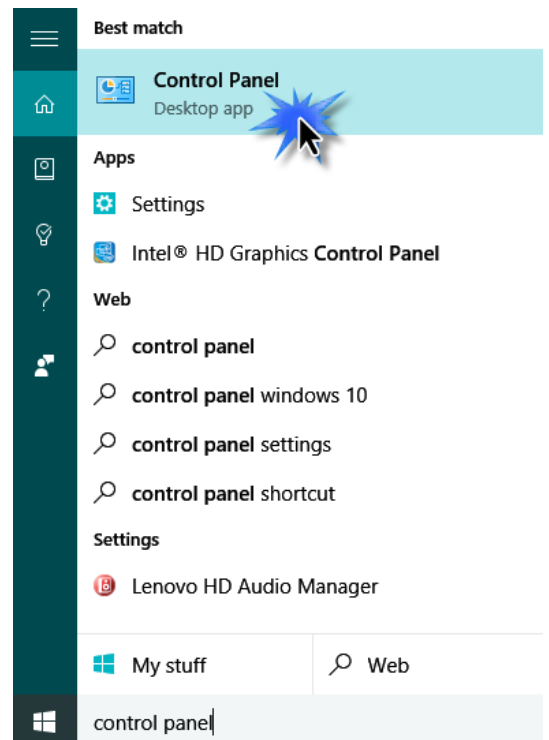
Hardware and Sound

View devices and printers
Add a device



Programs

Uninstall a program



3. Seleccione **Edimax** (o similar) y haga clic en **Desinstalar**.

Name	Publisher	Installed On
Edimax 10 Gigabit Ethernet SFP+ PCI Express Adapter	Edimax	06/05/2017
Microsoft Office 365 Small Business Premium - en-us	Microsoft Corporation	02/05/2017
Lenovo System Interface Foundation	Lenovo	29/04/2017
Mozilla Firefox 52.0.1 (x86 en-US)	Mozilla	29/04/2017

COPYRIGHT

Copyright © Edimax Technology Co., Ltd. all rights reserved. No part of this publication may be reproduced, transmitted, transcribed, stored in a retrieval system, or translated into any language or computer language, in any form or by any means, electronic, mechanical, magnetic, optical, chemical, manual or otherwise, without the prior written permission from Edimax Technology Co., Ltd.

Edimax Technology Co., Ltd. makes no representations or warranties, either expressed or implied, with respect to the contents hereof and specifically disclaims any warranties, merchantability, or fitness for any particular purpose. Any software described in this manual is sold or licensed as is. Should the programs prove defective following their purchase, the buyer (and not this company, its distributor, or its dealer) assumes the entire cost of all necessary servicing, repair, and any incidental or consequential damages resulting from any defect in the software. Edimax Technology Co., Ltd. reserves the right to revise this publication and to make changes from time to time in the contents hereof without the obligation to notify any person of such revision or changes.

The product you have purchased and the setup screen may appear slightly different from those shown in this QIG. The software and specifications are subject to change without notice. Please visit our website www.edimax.com for updates. All brand and product names mentioned in this manual are trademarks and/or registered trademarks of their respective holders.

Federal Communication Commission Interference Statement

This equipment has been tested and found to comply with the limits for a Class B digital device, pursuant to Part 15 of the FCC Rules. These limits are designed to provide reasonable protection against harmful interference in a residential installation. This equipment generates, uses and can radiate radio frequency energy and, if not installed and used in accordance with the instructions, may cause harmful interference to radio communications. However, there is no guarantee that interference will not occur in a particular installation. If this equipment does cause harmful interference to radio or television reception, which can be determined by turning the equipment off and on, the user is encouraged to try to correct the interference by one or more of the following measures:

- Reorient or relocate the receiving antenna.
- Increase the separation between the equipment and receiver.
- Connect the equipment into an outlet on a circuit different from that to which the receiver is connected.
- Consult the dealer or an experienced radio/TV technician for help.

FCC Caution: Any changes or modifications not expressly approved by the party responsible for compliance could void the user's authority to operate this equipment.

This device complies with Part 15 of the FCC Rules. Operation is subject to the following two conditions: (1) This device may not cause harmful interference, and (2) this device must accept any interference received, including interference that may cause undesired operation.

This device and its antenna(s) must not be co-located or operating in conjunction with any other antenna or transmitter.

EU Declaration of Conformity

- English:** This equipment is in compliance with the essential requirements and other relevant provisions of Directive 2014/30/EU.
- Français:** Cet équipement est conforme aux exigences essentielles et autres dispositions de la directive 2014/30/EU.
- Čeština:** Toto zařízení je v souladu se základními požadavky a ostatními příslušnými ustanoveními směrnice 2014/30/EU.
- Polski:** Urządzenie jest zgodne z ogólnymi wymaganiami oraz szczególnymi warunkami określonymi Dyrektywą UE 2014/30/EU.
- Română:** Acest echipament este în conformitate cu cerințele esențiale și alte prevederi relevante ale Directivei 2014/30/EU.
- Русский:** Это оборудование соответствует основным требованиям и положениям Директивы 2014/30/EU.
- Magyar:** Ez a berendezés megfelel az alapvető követelményeknek és más vonatkozó irányelveknek (2014/30/EU).
- Türkçe:** Bu cihaz 2014/30/EU. direktifleri zorunlu istekler ve diğer hükümlerle ile uyumludur.
- Українська:** Обладнання відповідає вимогам і умовам директиви 2014/30/EU.
- Slovenčina:** Toto zariadenie spĺňa základné požiadavky a ďalšie príslušné ustanovenia smerníc 2014/30/EU.
- Deutsch:** Dieses Gerät erfüllt die Voraussetzungen gemäß den Richtlinien 2014/30/EU.
- Español:** El presente equipo cumple los requisitos esenciales de la Directiva 2014/30/EU.
- Italiano:** Questo apparecchio è conforme ai requisiti essenziali e alle altre disposizioni applicabili della Direttiva 2014/30/EU.
- Nederlands:** Dit apparaat voldoet aan de essentiële eisen en andere van toepassing zijnde bepalingen van richtlijn 2014/30/EU.
- Português:** Este equipamento cumpre os requisitos essenciais da Directiva 2014/30/EU.
- Norsk:** Dette utstyret er i samsvar med de viktigste kravene og andre relevante regler i Direktiv 2014/30/EU.
- Svenska:** Denna utrustning är i överensstämmelse med de väsentliga kraven och övriga relevanta bestämmelser i direktiv 2014/30/EU.
- Dansk:** Dette udstyr er i overensstemmelse med de væsentligste krav og andre relevante forordninger i direktiv 2014/30/EU.
- suomen kieli:** Tämä laite täyttää direktiivien 2014/30/EU. oleelliset vaatimukset ja muut asiaankuuluvat määräykset.

FOR USE IN 



WEEE Directive & Product Disposal



At the end of its serviceable life, this product should not be treated as household or general waste. It should be handed over to the applicable collection point for the recycling of electrical and electronic equipment, or returned to the supplier for disposal.

Declaration of Conformity

We, Edimax Technology Co., Ltd., declare under our sole responsibility, that the equipment described below complies with the requirements of the European R&TTE directives.

Equipment: 10GbE SFP+ / 10GbE Network Adapter Card

Model No.: EN-9320SFP+ / EN-9320TX-E

The following European standards for essential requirements have been followed:

Directives 2014/30/EU

EN 55032:2012/AC:2013 Class B

EN 61000-3-2:2014

EN 61000-3-3:2013

EN 55024:2010

EN 61000-4-2:2009 (ESD)

EN 61000-4-3:2006/A1:2008/A2:2010 (RS)

EN 61000-4-4:2012 (EFT)

EN 61000-4-5:2014 (Surge)

EN 61000-4-6:2014 (CS)

EN 61000-4-8:2010 (PFMF)

EN 61000-4-11:2004 (DIP)

Edimax Technology Europe B.V.

Fijenhof 2,

5652 AE Eindhoven,

The Netherlands

Signature:

Printed Name: Vivian Ma

Title: Director

Edimax Technology Europe B.V.

a company of :

Edimax Technology Co., Ltd.

No. 278, Xinhua 1st Rd., Neihu

Dist., Taipei City, Taiwan



Date of Signature: April, 2017

Signature:

A handwritten signature in black ink, appearing to read 'Albert Chang', written over a horizontal line.

Printed Name:

Albert Chang

Title:

Director

Edimax Technology Co., Ltd.



EDIMAX
NETWORKING PEOPLE TOGETHER

The logo features the Greek letter sigma (Σ) as the first letter of 'EDIMAX'. A red dot is positioned above the 'I'. The background is a dark grey band filled with various white line-art icons representing technology, networking, and human interaction, such as a handshake, musical notes, a smiley face, a game controller, and a laptop. Below the dark band is a solid dark purple horizontal bar.