

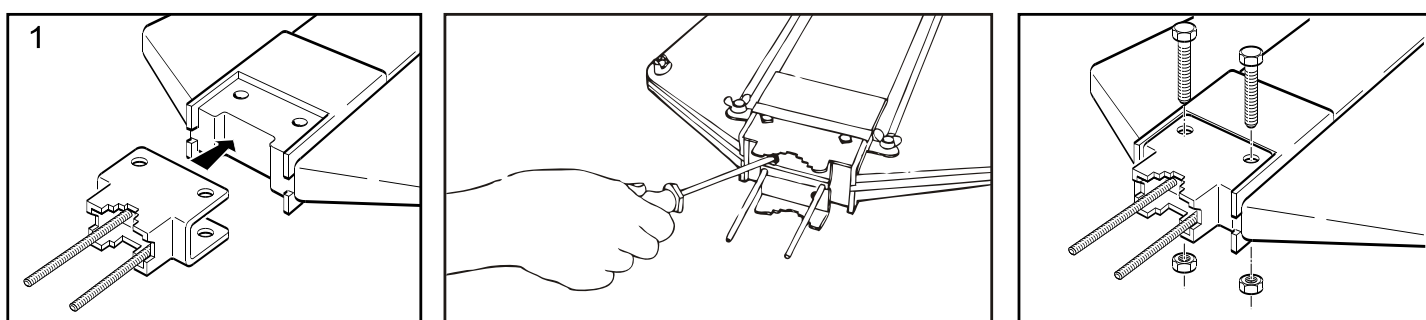
UHF/VHF/FM ACTIVE COLOR ANTENNA INSTALLATION AND OPERATING INSTRUCTIONS

SPECIFICATIONS

- Frequency range: 40~890MHz
- Insertion loss: VHF:1~2.3dB, UHF:1~2.8dB
- Rated primary voltage: 12VDC
- Rated secondary voltage: 12VDC (Max. 100mA)
- Input impedance: 75
- Output impedance: 75
- Working temperature range: -20°C~+50°C
- Major dimensions: (H)22mmx(W)68mmx(D)60mm
- Weight: 0.05kg

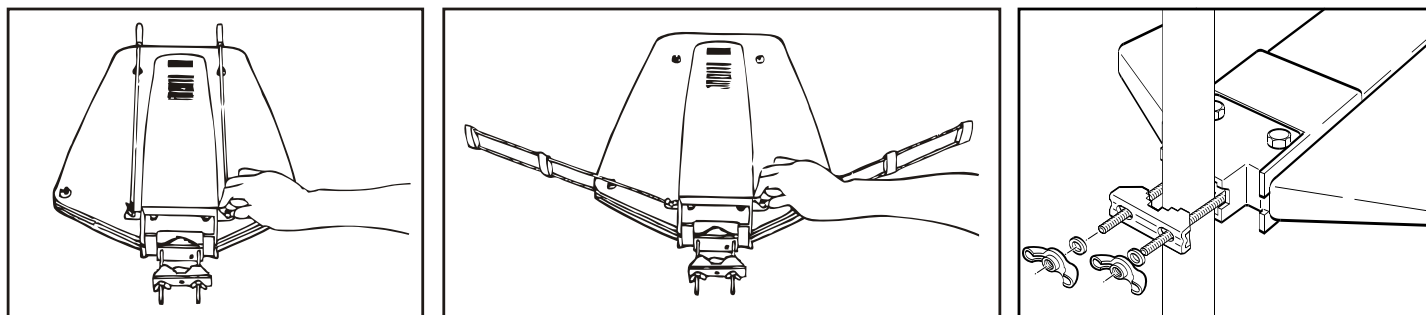
1. Connecting the Mast Fixture to the Antenna

Using the 2 screws, connect the mast fixture to the antenna body. Tighten securely after matching up the green marks of the fixture with the green marks on the body.



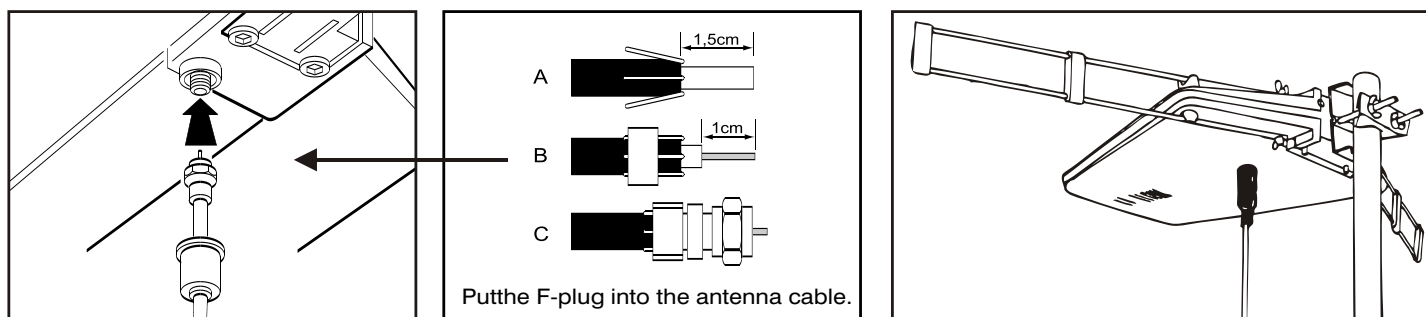
2. Setting the VHF Element

Loosen the wing nuts (4 places) of the VHF element section and spread open. After adjusting for reception, tighten the nuts.



3. Coaxial Cable Connection

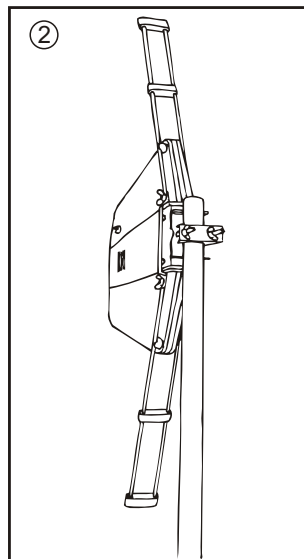
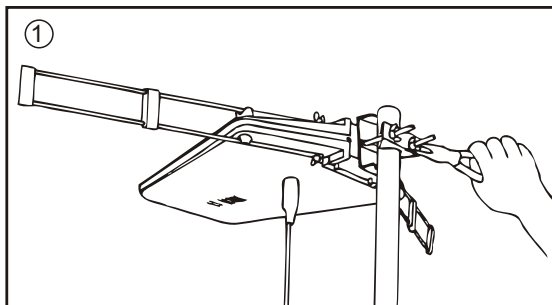
The antenna body connected by the coaxial cable to the power supply. Plug in securely to the socket on the underside of the antenna body placing the waterproof cover over the top.



4. Installing on the Mast

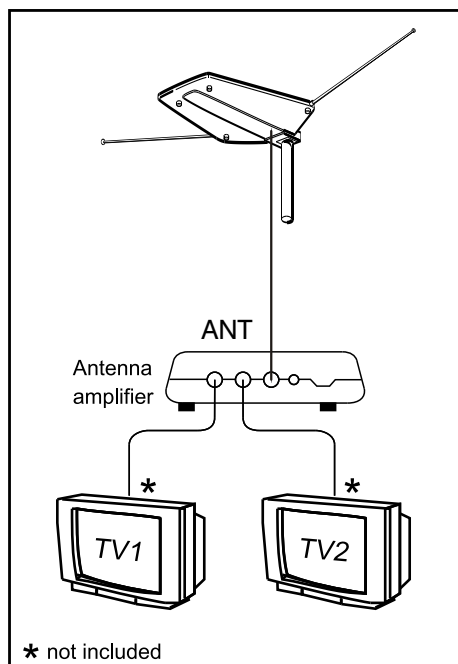
Install the antenna on the mast; when the received wave is horizontally, follow **(Fig. 1)**; when vertically polarized, install as in **(Fig. 2)** Now, adjust the antenna direction for the best possible picture and fix in position. For UHF (Bands IV, V), especially, not only antenna direction but also the height must be adjusted.

When using this antenna on a camper etc., heavy wind pressure is placed on the antenna while moving. Therefore, before driving either remove the antenna temporarily or position it out of the wind.

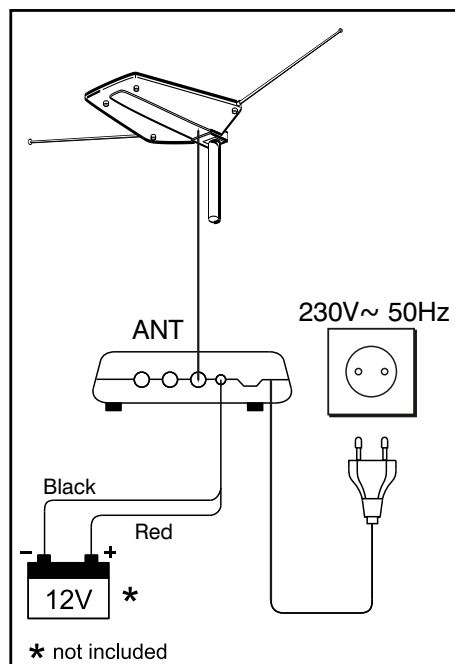


5. Connection to Power Source and TV Receiver

A variety commercial 12VDC power sources can be used for the power supply unit. An optional AC Adaptor as well as other accessories are available. Select the method suited to your special needs. Follow TV operating instructions when connecting TV receiver and power source.



Connect your antenna to the amplifier, and the amplifier to one or two TVs.



Plug the amplifier into a wall outlet or use the red and black cable for the power supply of the amplifier by a car battery*.