



## Klam-Klip (KK)

### Features and Benefits

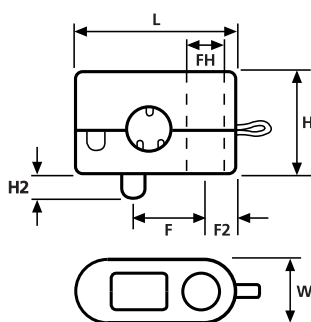
Klam-Klips guide and secure leads with a simple one screw fixing. The two halves of the clip are linked to ensure that parts are not lost during any re-wiring and an anti-rotation pin ensures that the leads do not become twisted during installation.



Klam-Klip KK1-4.



Klam-Klip KK1-4.



Klam-Klip Cable Restraints

### Material Data

Material	Polyamide 6.6 (PA66)
Operating Temperature	-40 °C to +85 °C Continuous, (+105 °C for 500 h)
Flammability	UL94 V2



### Technical Table

Article-No.	Type	Length (L)	Width (W)	Height (H)	Height (H2)	Fixing Hole Ø (FH)	Bundle Ø min.	Bundle Ø max.	Fixing Hole Centres (F2)	Fixing Hole Centres (F3)	Material	Colour
234-10100	KK1	22.0	8.8	14.0	3.5	5.0	4.5	5.7	10.0	4.5	PA66	Black (BK)
234-10200	KK2	22.0	8.8	14.0	3.5	5.0	5.5	6.7	10.0	4.5	PA66	Black (BK)
234-10300	KK3	22.0	8.8	14.0	3.5	5.0	6.5	7.7	10.0	4.5	PA66	Black (BK)
234-10400	KK4	22.0	8.8	14.0	3.5	5.0	7.5	8.5	10.0	4.5	PA66	Black (BK)

All dimensions in mm. Subject to technical changes.