

MINI CAM USER MANUAL

MODEL 460668



BRINGING COMPUTERS TO LIFE

MAN-460668-UM-0806-02

Congratulations on purchasing the MANHATTAN® Mini Cam, Model 460668.

This new-generation mini cam, which works with a USB port that connects to your PC, features the convenience and enjoyment of Plug and Play and real-time transmission. Its mini size allows for tremendous versatility in positioning and use, and its high resolution and speed make life more colorful while making your long-distance communications wonderfully fresh and vivid.

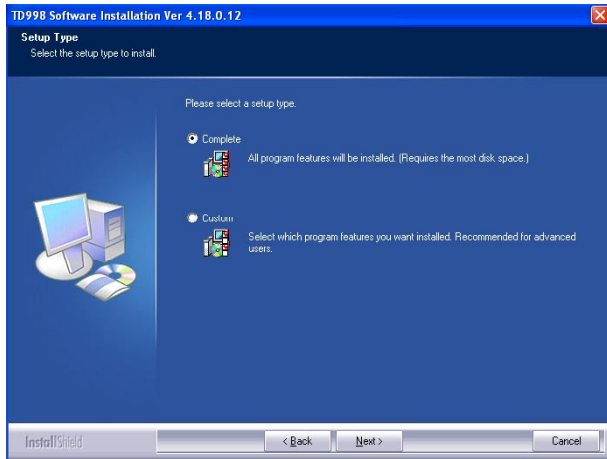
CAUTION: As with any electronic equipment, avoid dropping, jostling or otherwise mishandling your Mini Cam, as this can affect its performance. Do not place your Mini Cam in extremely hot, cold or dusty environments. A soft cotton cloth is recommended for cleaning the lens and/or any other optical components — prevent camera contact with sharp items (such as long fingernails) or coarse or wet materials.

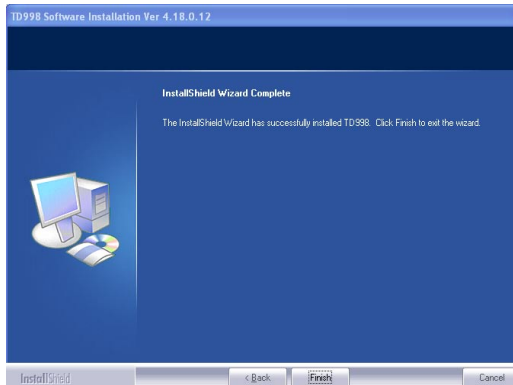
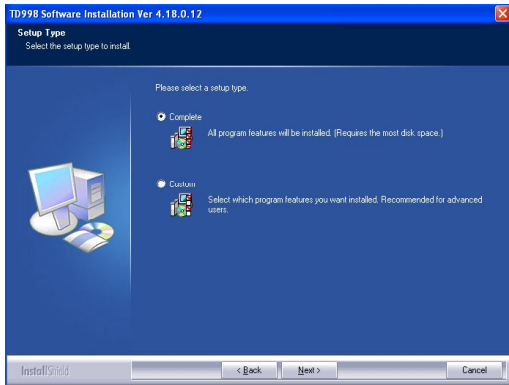
SYSTEM REQUIREMENTS

- IBM PC-compatible computer (or notebook) with USB port
- Pentium 200 or higher CPU
- Windows 98SE/Me/2000/XP operating system
- Minimum of 20 MB of available hard-drive space
- CD-ROM drive
- Minimum of 32 MB of available memory
- VGA display card available for DirectX

DRIVER INSTALLATION

1. Place the "CD Driver" disk in the CD-ROM of your computer.
2. When presented with the prompt shown below-left, click "Driver."
3. Follow the on-screen prompts and click "Next" to progress through the driver installation procedure.



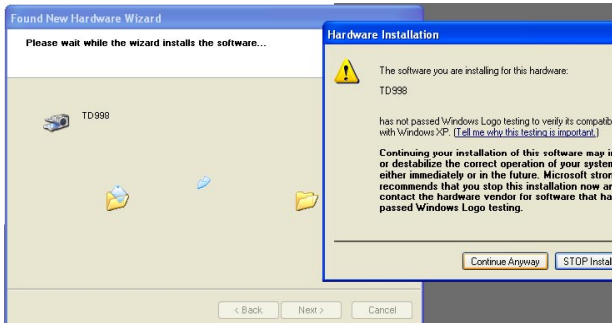


4. When prompted, select "Complete."
5. When prompted, click "Finish."

SOFTWARE INSTALLATION

1. Connect the Mini Cam to the PC via the computer's USB port. The system will find the new hardware and will automatically install the software, as shown at right.

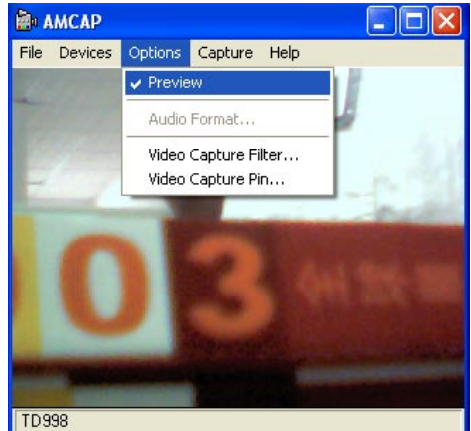
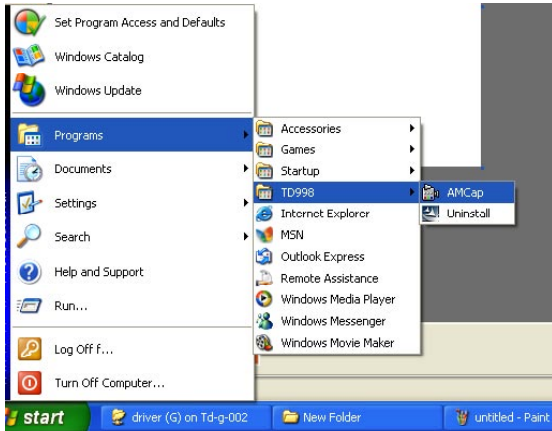




2. When the new hardware appears, click "Continue Anyway."

3. Click "Finish."

NOTE: At this point of the installation, your computer may be required to be re-booted.



4. On your main-screen menu, click "Start."

5. Click on "Programs," then "TD998" and, finally, "AMCap." Your MANHATTAN Mini Cam is now ready for you to use and enjoy.

SPECIFICATIONS

- CIF CMOS color sensor
- Resolution: 300k pixels (software-interpolated)
- Video format: 24-bit true color
- Interface: USB1.1
- Transmission speed: 320 x 240 @ 30 frames/second; 640 x 480 @ 15 frames/second
- Imaging distance: 5 cm to infinity
- Built-in image compression
- Automatic white balance
- Automatic color compensation
- Manual adjusting focus
- Manual snapshot



www.manhattan-products.com

Are you completely satisfied with this product?
Please contact your MANHATTAN® dealer with comments or questions.

Copyright © MANHATTAN

All products mentioned are trademarks or registered trademarks of their respective owners.