

# Magnet Contacts

MK-2000 Series

**VANDERBILT**



The new EN50131-2-6 approved magnetic contacts series MK-2000 offers a wide variety of products with the following features:

- Self-locking screw housing with torx profile
- Good long-term stability
- Can be used for steel doors and gates
- Protection to IP67 for applications inside and outside
- Convenient mounting

# Magnet Contacts

MK-2000 Series

**VANDERBILT**

## Functionalities

### ■ Application

The magnetic contacts of the MK-2000 series are used in alarm signalling systems and security access control systems to protect doors, gates and windows against unauthorized opening. The extensive assortment of installation accessories permit the use of these contacts in almost any inside or outside application.

### ■ Function

The magnetic contact consists of two parts, i.e. the reed contact and a permanent magnet. The reed contact and the magnet are mounted at a defined distance on the fixed and the movable

parts of the object to be protected. The reed contact remains closed by the force field of the permanent magnet. If the distance between the reed contact and the magnet increases, the magnetic field becomes weaker in the reed contact and causes the reed contact to open and interrupt the electric circuit.

### ■ Installation

The installer must ensure that the air gap between the fixed and the moveable parts does not permit sabotage. The MK-2000 series have a self-cutting and self-locking thread, which permits direct sunk installation in wood and plastic objects

without any additional accessories. For installation a hole has to be drilled. The reed contact is screwed into the fixed part of the object to be protected, and the magnetic part is screwed into the moveable part of the object. Because of the very flexible connection cable to the contact installation is easy, even if the cables have to be bent. For use in other materials or in locations where direct use of contacts and magnets is not possible, a plastic adapter set is available, the contact can be screwed to one side and the magnet to the other.

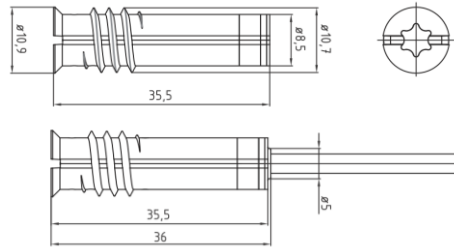
**VANDERBILT**

# Magnet Contacts

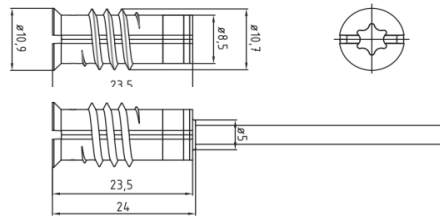
MK-2000 Series

VANDERBILT

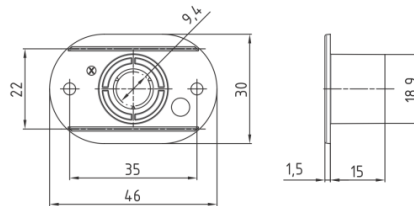
MK-2400; MK-2700



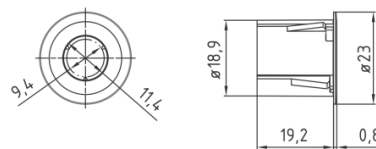
MK-2500



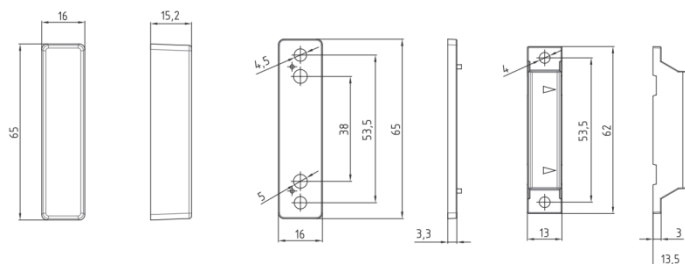
MK-2000-1; MK-2000-2



MK-2000-31; MK-2000-32 – 19mm Ø  
MK-2000-21; MK-2000-22 – 25mm Ø



MK-2000-3; MK-2000-4



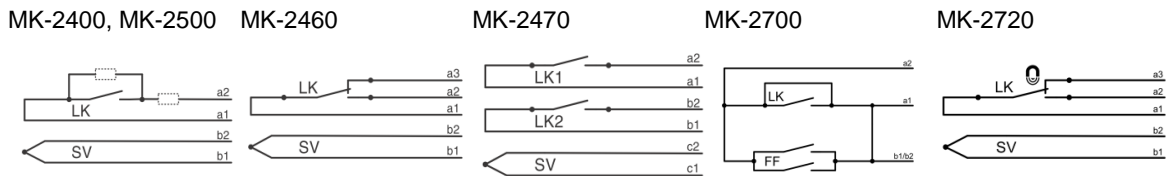
VANDERBILT

# Magnet Contacts

MK-2000 Series

VANDERBILT

## ■ Technical data



Approvals (pending)	VdS Klasse B, Gxxxxxx, EN 50131-2-6, Grade 2 SBSC, Larmklass 1/2	EN 50131-2-6, Grade 2 SBSC, Larmklass 1/2	EN 50131-2-6, Grade 2 SBSC, Larmklass 1/2	VdS Klasse C, Gxxxxxx EN 50131-2-6, Grade 3 SBSC, Larmklass 3/4	EN 50131-2-6, Grade 3 SBSC, Larmklass 3/4
---------------------	---	--	--	--	--

Contact type	N/C contact	Change-over contact	N/C contact	N/C contact	Change-over contact
Switching capacity	≤ 10 W / VA	≤ 3 W / VA	≤ 10 W / VA	≤ 10 W / VA	≤ 3 W / VA
Switching voltage	≤ 100 V DC; ≤ 70 VAC	≤ 30 VDC; ≤ 30 VAC	≤ 100 V DC; ≤ 70 VAC	≤ 100 V DC; ≤ 70 VAC	≤ 30 VDC; ≤ 30 VAC
DC switching current	≤ 500 mA	≤ 500 mA	≤ 500 mA	≤ 500 mA	≤ 500 mA
Permanent current	≤ 500 mA		≤ 500 mA	≤ 500 mA	
Operating temperature	-40 °C to +70 °C				
Magnet	AlNiCo 5, NdFeB				
Protection category	IP67				
Environmental class	III / IIIA				

VANDERBILT

# Magnet Contacts

## MK-2000 Series

VANDERBILT

### ■ Ordering Informations

Type	Order No.	Description	Weight
MK-2000-1	V54536-M101-A100	Plastic adapter	0.012 kg
MK-2000-2	V54536-M101-A200	Plastic adapter with strong magnet	0.015 kg
MK-2000-3	V54536-H101-A100	Housing for surface mounting	0.026 kg
MK-2000-4	V54536-H101-A200	Housing for surface mounting with strong magnet	0.04 kg
MK-2000-21	V54536-M102-A300	Plastic adapter round 25mm	0.008 kg
MK-2000-22	V54536-M102-A400	Plastic adapter, round 25 mm, with strong magnet	0.011 kg
MK-2000-31	V54536-M102-A100	Plastic adapter, round 19mm	0.008 kg
MK-2000-32	V54536-M102-A200	Plastic adapter, round 19mm, with strong magnet	0.011 kg
MK-2400-2	V54536-F102-A100	Magnetic contact, 2 m cable	0.054 kg
MK-2400-6	V54536-F102-A200	Magnetic contact, 6 m cable	0.114 kg
MK-2400-10	V54536-F102-A300	Magnetic contact, 10 m cable	0.174 kg
MK-2400-20	V54536-F102-A400	Magnetic contact, 20 m cable	0.324 kg
MK-2400-2-1K	V54536-F103-A100	Magnetic contact, 2 m cable, 1k ohm resistor	0.054 kg
MK-2400-2-2K2	V54536-F103-A200	Magnetic contact, 2 m cable, 2 x 2k2 ohm resistor	0.054 kg
MK-2460-6	V54536-F105-A100	Magnetic contact, 6 m cable, change-over contact	0.06 kg
MK-2470-2	V54536-F106-A100	Magnetic contact, 2 m cable, two reed contacts	0.08 kg
MK-2500-2	V54536-F107-A100	Magnetic contact, short-version, 2 m cable	0.043 kg
MK-2500-6	V54536-F107-A200	Magnetic contact, short-version, 6 m cable	0.103 kg
MK-2500-10	V54536-F107-A300	Magnetic contact, short-version, 10 m cable	0.163 kg
MK-2500-25	V54536-F107-A400	Magnetic contact, short-version, 25 m cable	0.388 kg
MK-2700-2	V54536-F108-A100	High security magnetic contact, 2 m cable	0.047 kg
MK-2700-6	V54536-F108-A200	High security magnetic contact, 6 m cable	0.107 kg
MK-2700-20	V54536-F108-A300	High security magnetic contact, 20 m cable	0.317 kg
MK-2720-6	V54536-F109-A100	High security magnetic contact, 6 m cable, change-over contact	0.06 kg

VANDERBILT