

● RADIAL TYPE

● SPECIFICATION

Lead taping is designed for automatic insertion equipment. Capacitor with case size of 18mm x 35.5mm or smaller are available in taping type.

■ DIMENSIONS ($\phi 4 \sim \phi 10$)

(mm)

Item	Symbol	Case Size													Tolerance	Remark	
		4x5	5x5	6.3x5	8x5	4x7	5x7	6.3x7	8x7	5x11	6.3x11	8x11.5	10x12.5	10x16			10x18
Lead wire diameter	d	0.45					0.5				0.6				± 0.05		
Body height	A	6.0			8.0				12.5	13	14	17.5	19.5	21.5	max		
Intervals of bodies	P	12.7													± 1.0		
Intervals of punched holes	P ⁰	12.7													± 0.2		
Distance between holes and lead wire	P ₁	3.85													± 0.7	Fig 1. Fig 4.	
		5.35	5.1	5.1			5.35	5.1	5.1		5.1						Fig 2.
		5.6	5.35	5.1	5.1	5.6	5.35	5.1	4.6	5.35	5.1	4.6					Fig 3.
Distance between holes and bodies	P ₂	6.35													± 1.0		
Distance between lead and lead	F	5.0													$+0.8$ -0.2	Fig 1. Fig 4.	
		2.0	2.5	2.5			2.0	2.5	2.5		2.5						Fig 2.F1:5.0 $+0.5$ -1.0
		1.5	2.0	2.5	2.5	1.5	2.0	2.5	3.5	2.0	2.5	3.5					Fig 3.F1:5.0 $+0.5$ -1.0
Base tape width	W	18.0													± 0.5		
Adhesive tape width	W ⁰	12.5													min		
Deviation between holes and base tape	W ¹	9.0													± 0.5		
Deviation between adhesive and base tape	W ²	1.5													max		
Distance between body bottom and tape center	H	17.5					18.5				20.0	18.5				± 0.5	Fig 1. Fig 4.
		17.5					18.5				18.5						Fig 2. Fig 3.
Lead wire clinched height	H ⁰	16.0													± 0.5		
Distance between body top and tape center	H ₁	24.5			27.5				32.5			33.0	36.0	38.0	41.0	max	
Punched hole diameter	D ⁰	4.0													± 0.3		
Length of not good lead slit	L	11.0													max		
Base and adhesive tape thickness	t	0.6													± 0.3		
Deviation of body alignment	Δh	0													± 2.0		
Deviation of body alignment	Δh_1	0													± 1.0		

Fig 1. ($\phi 4 \sim \phi 8$)

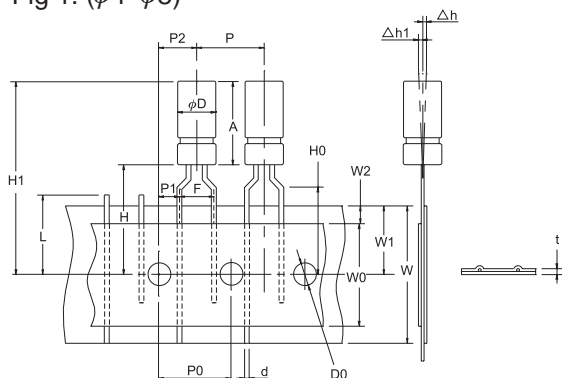
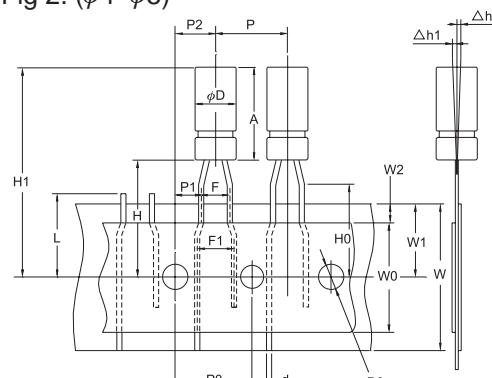
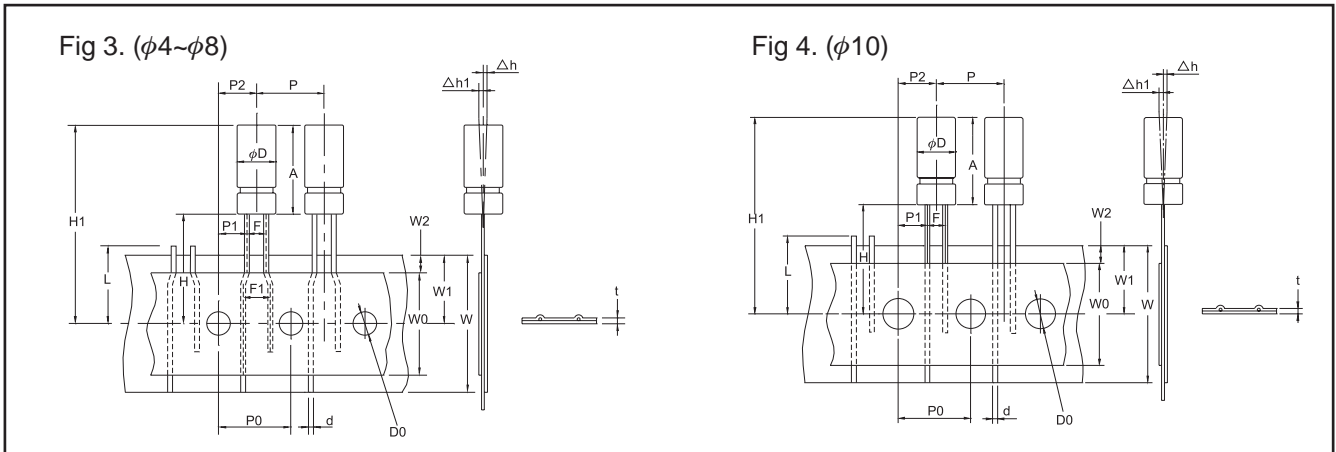


Fig 2. ($\phi 4 \sim \phi 5$)





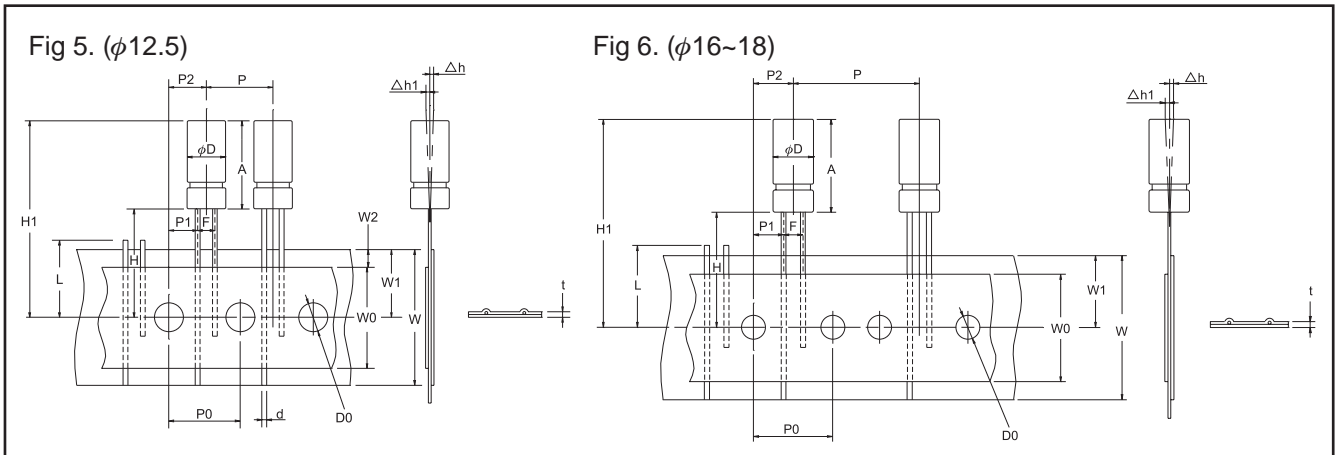
■ TAPING CODE (φ4~φ18)

Case Size (D x L)									Lead Space	CODE	
									F	14th	15th
φ4 x 5	φ4 x 7								1.5mm	E	1
φ4 x 5	φ5 x 5	φ4 x 7	φ5 x 7	φ5 x 11					2.0mm	E	4
φ4 x 5	φ5 x 5	φ6.3 x 5	φ8 x 5	φ4 x 7	φ5 x 7	φ6.3 x 7	φ5 x 11	φ6.3 x 11	2.5mm	E	2
φ8 x 7	φ8 x 11 (11.5)								3.5mm	E	3
φ4 x 5 ~ φ12.5 x 30									5.0mm	—	—
φ16 x 25 ~ φ18 x 35.5									7.5mm	—	—

■ DIMENSIONS (φ12.5~φ18)

(mm)

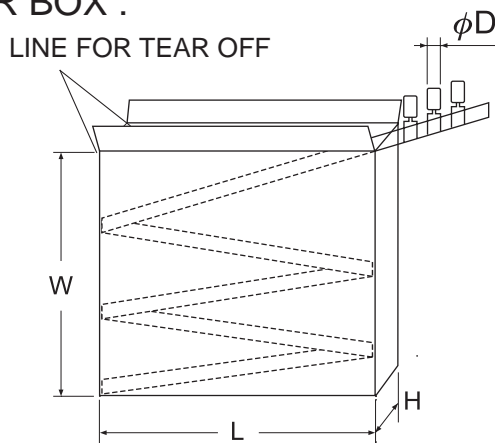
Item	Symbol	Case Size							Tolerance	Remark
		12.5 x 20	12.5 x 25	12.5 x 30	16 x 25	16 x 31.5	16 x 35.5	18 x 35.5		
Lead wire diameter	d	0.6			0.8				±0.05	
Body height	A	21.5	26.5	31.5	26.5	33	37.0	37.0	max	
Intervals of bodies	P	15.0			30.0				±1.0	Fig 5. Fig 6.
Intervals of punched holes	P ⁰	15.0							±0.2	
Distance between holes and lead wire	P ₁	5.0			3.75				±0.7	
Distance between holes and bodies	P ₂	7.5							±1.0	
Distance between lead and lead	F	5.0			7.5				+0.8 -0.2	
Base tape width	W	18.0							±0.5	
Adhesive tape width	W ₀	15.0							min	
Deviation between holes and base tape	W ₁	9.0							±0.5	
Deviation between adhesive and base tape	W ₂	1.5							max	
Distance between body bottom and tape center	H	16.5			18.5				±0.5	Fig 5. Fig 6.
Distance between body top and tape center	H ₁	40.5	45.5	50.5	46.5	53.5	56.5	56.5	max	
Punched hole diameter	D ⁰	4.0							±0.3	
Length of not good lead slit	L	11.0							max	
Base and adhesive tape thickness	t	0.6							±0.3	
Deviation of body alignment	Δh	0							±2.0	
Deviation of body alignment	Δh ₁	0							±1.0	



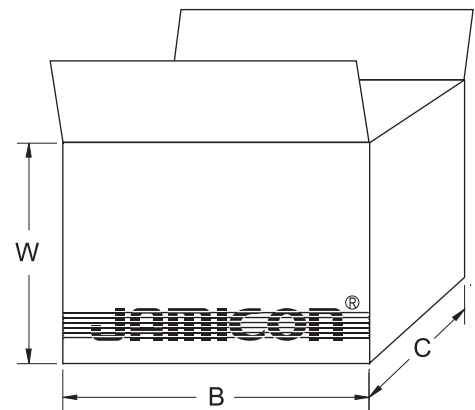
● PACKING (SYMBOL : P)

Available for various automatic equipment. Choosing the ordinal the polarity of capacitor's lead depends on customer's request.

■ INNER BOX :



■ PACKING CARTON :



D×L	INNER BOX				PACKING CARTON			Inner Box	Quantity(Pcs)
	W±10(mm)	L±10(mm)	H±10(mm)	Quantity(Pcs)	A±10(mm)	B±10(mm)	C±10(mm)		
4×5,4×7	175	335	45	2000	240	355	185	5	10000
5×5,5×7	235	335	50	2000	270	355	250	5	10000
6.3×5,6.3×7	280	335	50	2000	270	355	300	5	10000
5×11	235	335	50	2000	270	355	250	5	10000
6.3×11	280	335	50	2000	270	355	300	5	10000
5×15,6.3×15	295	320	55	2000	320	345	320	5	10000
8×5,8×7,8×9,8×11.5	235	335	50	1000	270	355	250	5	5000
8×14, 8×15,8×16	295	320	55	1000	320	345	320	5	5000
8×20	295	320	60	1000	340	345	320	5	5000
10×12.5,10×16	295	320	55	800	320	345	320	5	4000
10×20	295	320	60	800	340	345	320	5	4000
10×23,10×25,10×26,10×30	295	320	65	800	320	345	320	4	3200
12.5×15	295	320	55	500	320	345	320	5	2500
12.5×18,12.5×20	295	320	60	500	340	345	320	5	2500
12.5×25,12.5×26	295	320	65	500	320	345	320	4	2000
12.5×30	295	320	70	500	320	345	320	4	2000
12.5×35,12.5×40	300	320	75	500	340	345	320	4	2000
16×15	295	320	55	300	320	345	320	5	1500
16×20	295	320	60	300	340	345	320	5	1500
16×25	295	320	65	300	320	345	320	4	1200
16×31.5	295	320	70	300	320	345	320	4	1200
16×35.5,16×40	300	320	75	300	340	345	320	4	1200
18×15,18×20,18×25	295	320	65	240	320	345	320	4	960
18×31.5	295	320	70	240	320	345	320	4	960
18×35.5,18×40	300	320	75	240	340	345	320	4	960