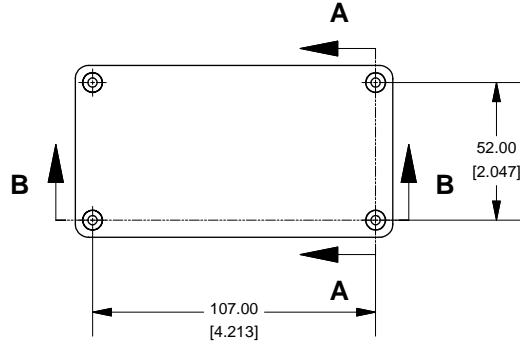
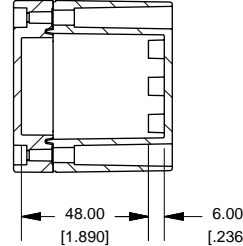


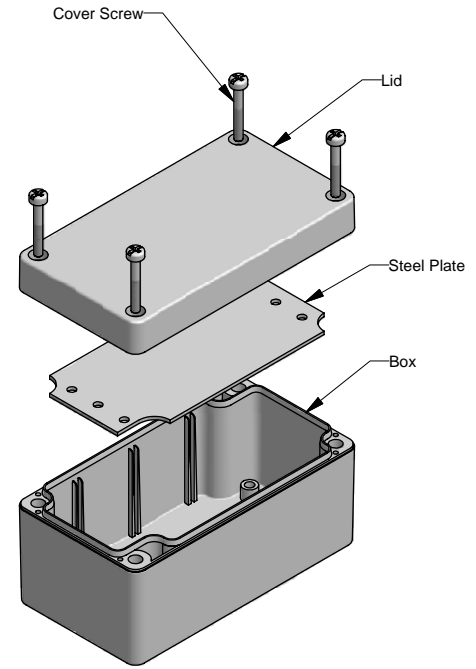
Top View of Assembly



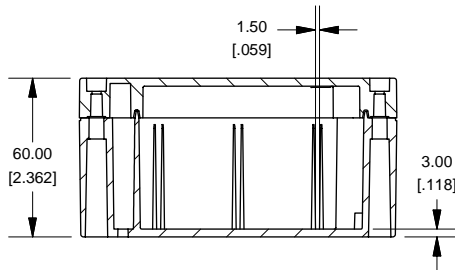
SECTION A-A End View of Assembly



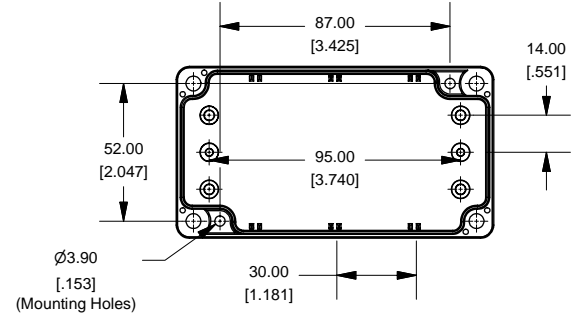
1554D



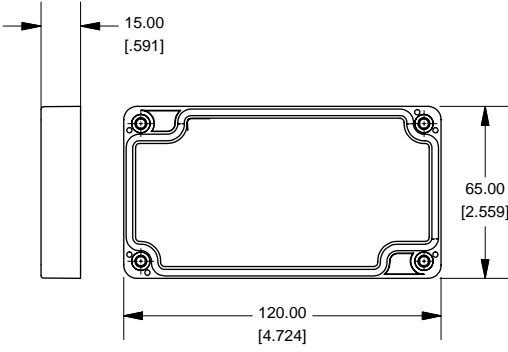
SECTION B-B Side View of Assembly



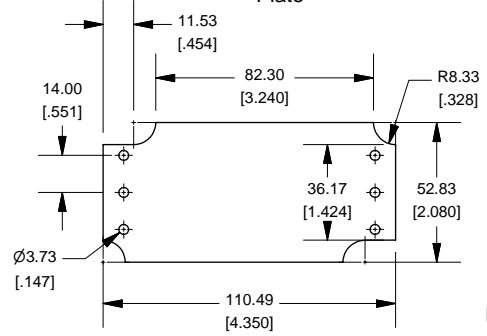
Top View Looking Inside Box



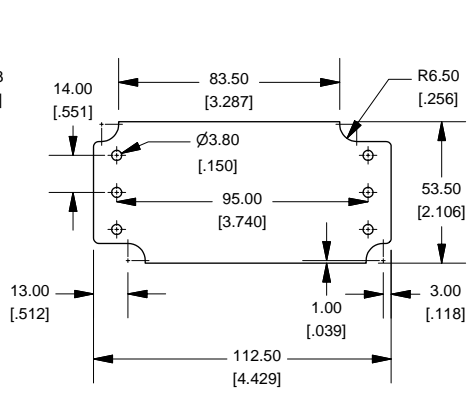
Lid



Available 16 Gauge Steel Plate



Maximum P.C. Board Size



NOTE
 Purchased assembly includes box, lid and 4 cover screws.
 Cover screws should be torqued to 2.5 lbf-in (30 cN-m)
 Polycarbonate version is 508 approved
 Enclosure Type 4X, 4, 12 File# E65324

| 1554D | |
|---|------------|
| 1554D Regular Enclosure | |
| General Purpose ABS | 1554DGY |
| Polycarbonate | 1554D2GY |
| 1554D Clear Lid Enclosure | |
| Polycarbonate | 1554D2GYCL |
| ACCESSORIES | |
| Heavy Duty 16 Gauge Galvanized Steel Panels | 1554CPL |
| Steel Panel / P.C. Board Machine Screw [M3 X 8mm Nickel Plated] | 1591MM100 |
| Steel Panel / P.C. Board Self Tapping Screw [#6 X 1/4" (6.4mm) Nickel Plated] | 1598ATS100 |
| Cover Screws (Pkg 4) | SC1554 |
| [M4 X 20mm Stainless Steel] | |

