





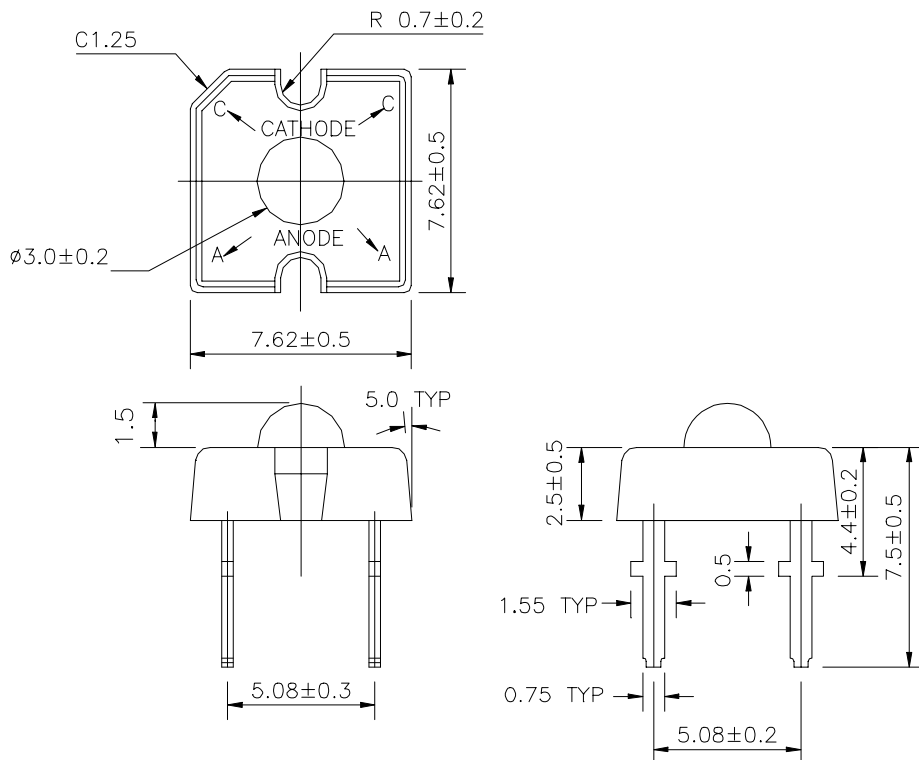
# EVERLIGHT ELECTRONICS CO.,LTD.

Device Number : DLE-300-006 REV: 1.3  
PART NO : 30-01SUGC ECN : \_\_\_\_\_ Page: 2/4

## ■ Absolute Maximum Ratings at $T_a = 25^\circ\text{C}$

Parameter	Symbol	Rating	Unit
Forward Current	$I_F$	30	mA
Operating Temperature	$T_{opr}$	-20 to +80	$^\circ\text{C}$
Storage Temperature	$T_{opr}$	-30 to +100	$^\circ\text{C}$
Soldering Temperature	$T_{sol}$	$260 \pm 5$	$^\circ\text{C}$
Electrostatic Discharge	ESD	150	V
Power Dissipation	$P_d$	120	mW
Peak Forward Current(Duty 1/10 @ 1KHz)	$I_F(\text{Peak})$	100	mA
Reverse Voltage	$V_R$	5	V

## ■ Package Dimensions:



### Notes :

- 1.All dimensions are millimeter.(inch)
- 2.An epoxy meniscus may extend about 1.5mm(0.059") down the lead.



# EVERLIGHT ELECTRONICS CO.,LTD.

Device Number : DLE-300-006 REV: 1.3  
 PART NO : 30-01SUGC ECN : \_\_\_\_\_ Page: 3/4

## ■ Electro-Optical Characteristics :

Parameter	Symbol	Min.	Typ.	Max.	Condition	Unit
Total Flux	$\Phi_v$	250	400	----	IF=20mA	mlm
Viewing Angle	$2\theta_{1/2}$	----	60	----	IF=20mA	deg
Peak Wavelength	$\lambda_p$	----	525	----	IF=20mA	nm
Dominant Wavelength	$\lambda_d$	----	530	----	IF=20mA	nm
Spectrum Radiation Bandwidth	$\Delta\lambda$	----	35	----	IF=20mA	nm
Forward Voltage	V <sub>F</sub>	----	3.5	4.3	IF=20mA	V
Reverse Current	I <sub>R</sub>	----	----	50	V <sub>R</sub> =5V	$\mu A$
Recommended Operating Current	I <sub>F</sub> (Rec)	----	----	20		mA
DC Forward Current	I <sub>F</sub> (mA)	----	----	30		mA

## ■ Reliability test items and conditions

NO	Item	Test Conditions	Test Hours/Cycle	Sample Size	Ac/Re
1	Solder Heat	TEMP:260°C ± 5 °C	5 SEC	76 PCS	0/1
2	Temperature Cycle	H : +85°C 30min ∩ 5 min L : -55°C 30min	50 CYCLES	76 PCS	0/1
3	Thermal Shock	H : +100°C 5min ∩ 10 sec L : -10°C 5min	50 CYCLES	76 PCS	0/1
4	High Temperature Storage	TEMP : 100°C	1000 HRS	76 PCS	0/1
5	Low Temperature Storage	TEMP : -55°C	1000 HRS	76 PCS	0/1
6	DC Operating Life	I <sub>F</sub> (max) mA	1000 HRS	76 PCS	0/1
7	High Temperature / High Humidity	85°C/85% RH	1000 HRS	76 PCS	0/1

