

ATTiny23U / ATTiny43U Routing&Socket card

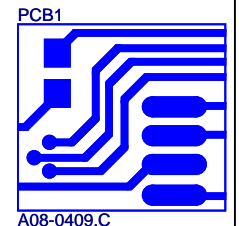
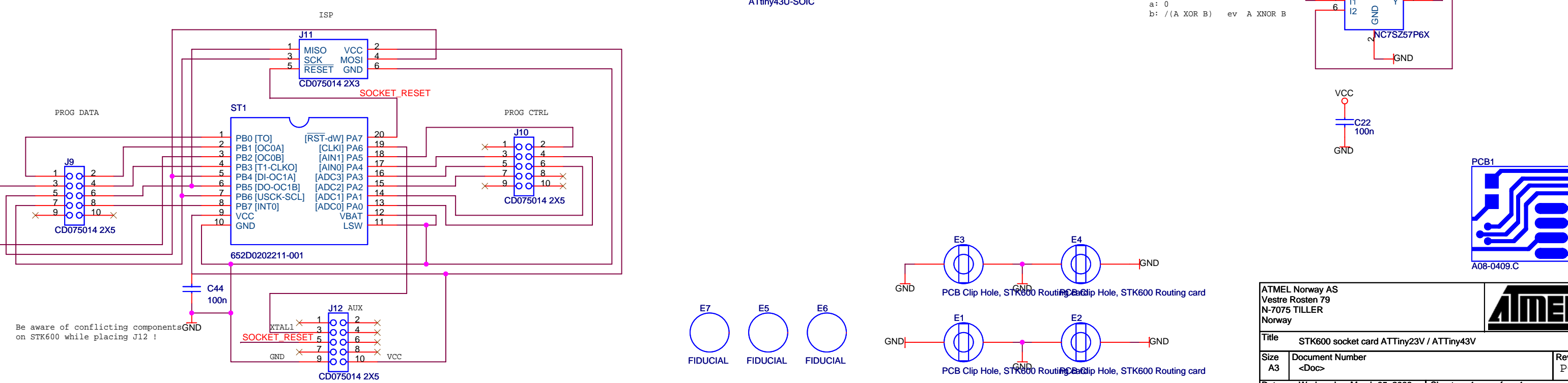
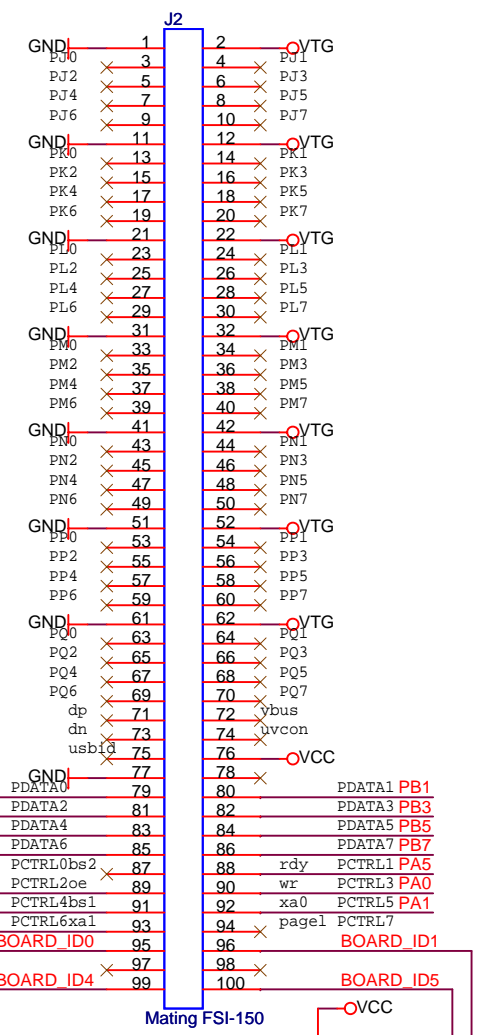
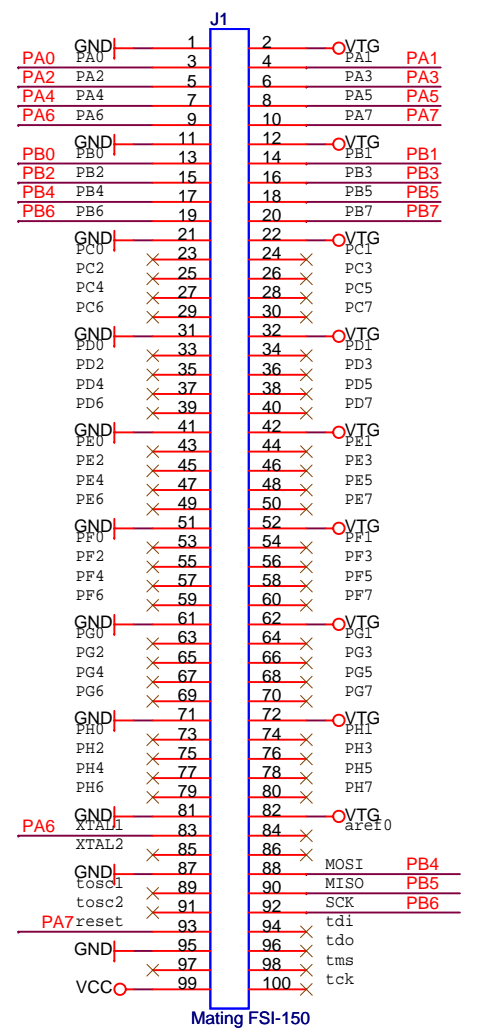
See layout guidelines for floorplan
Keep capacitors close to IC pins

J1 and J2 goes down to the mother board.

SILK: USAGE:
BOOST regulator:
open Vtarget jumper on mainboard
short J8
strap wire from mainboard Vtarget pin1 to J3 (Vbat) pin 1
w/o BOOST regulator
short J3 (Vbat)
open J8
short Vtarget jumper on mainboard

Silk: "J3 (Vbat)"
"pin1 +" and "pin2 -"
NOTE: When connecting external power to J3
- open Vtarget on mainboard
- short J8

Silk: J8
Short J8 to connect Boost to VCC / VTG



| | | |
|--|------------------------|----------|
| ATMEL Norway AS Vestre Rosten 79 N-7075 TILLER Norway | | |
| Title: STK600 socket card ATTiny23V / ATTiny43V | | |
| Size: A3 | Document Number: <Doc> | Rev: PC2 |
| Date: Wednesday, March 05, 2008 | Sheet: 1 of 1 | |

Be aware of conflicting components on STK600 while placing J12 !

