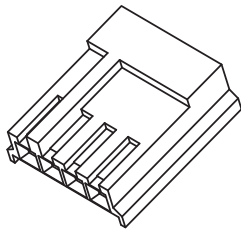


Crimphousing

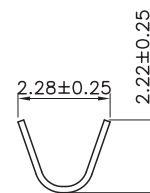
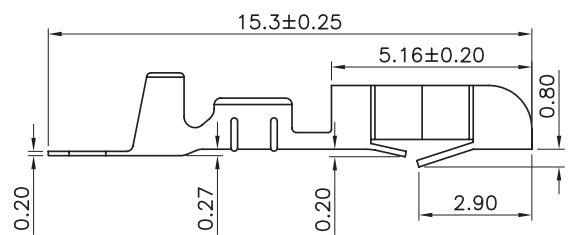
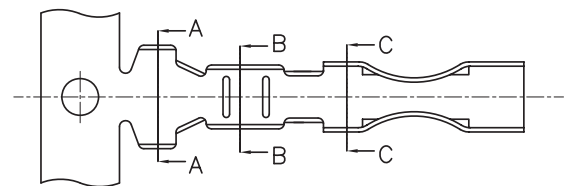
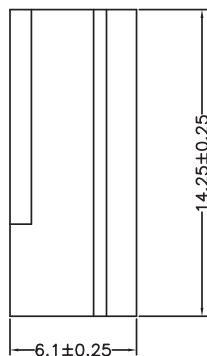
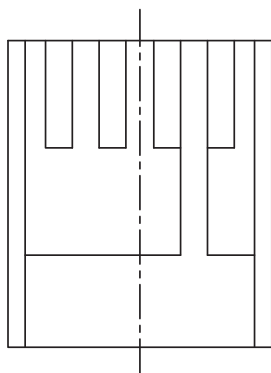
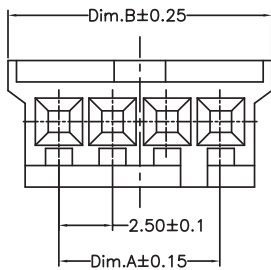


Technical data:

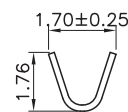
Insulating material: Thermoplast UL94V-0
 Contact material: Copper alloy
 Rated current: 3 Amp.
 Rated voltage: 250 VRMS/VDC
 Breakdown voltage: 600 VRMS for one minute
 Operating temperature: -40°C to +105°C

RoHS-compliant

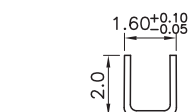
pitch	rows	row distance	orientation	termination
2,50	1		straight	crimp



SEC: A-A



SEC: B-B



SEC: C-C

Dimension:

Pincount	Dimension:		Pincount	Dimension:	
	A	B		A	B
002	2.50	7.30	007	15.00	19.80
003	5.00	9.80	008	17.50	22.30
004	7.50	12.30	009	20.00	24.80
005	10.00	14.80	010	22.50	27.30
006	12.50	17.30			

Crimpcontact

CC25-22/28-TT-RL

Plating: Tin

Packsize: 10.000 per Reel

Pincount: 002-010

Specification code: BLC15-1425G-XXXL