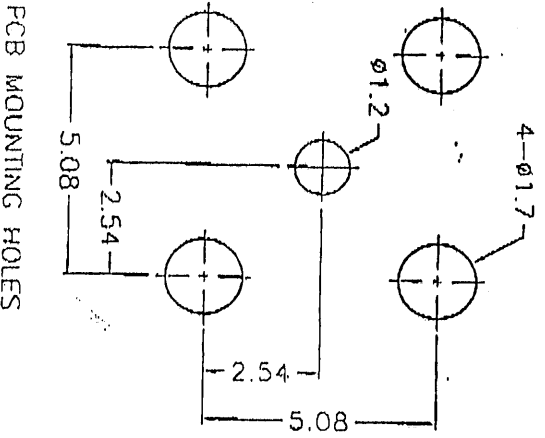


REV	DESCRIPTION	DATE
1		

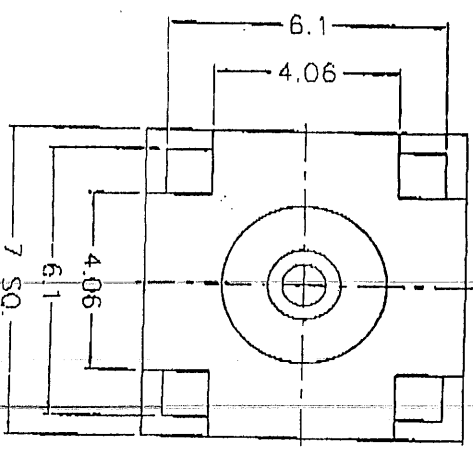
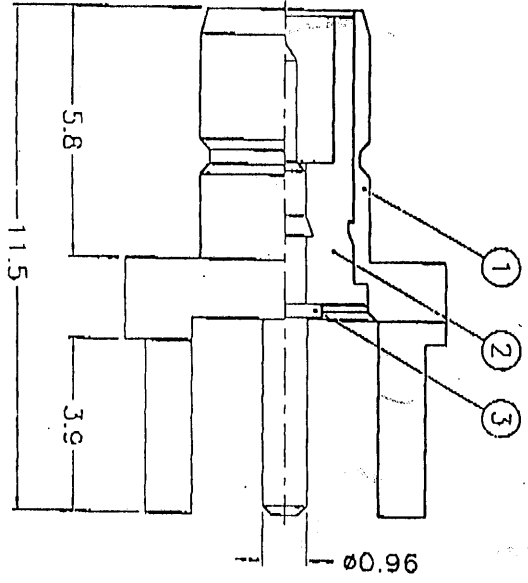
REVISIONS

DESCRIPTION PER REQUEST/DATE

SMB-PCB



PCB MOUNTING HOLES



- NOTES: FINISH (PLATING THICKNESS IN MICRO-INCHES)
1. BRASS PER QQ-B-676
 2. GOLD PL. 3 MIN. THICK OVER NICKEL PL. 100 MIN. THICK OVER COPPER STRIKE
 3. GOLD PL. 50 MIN. THICK OVER NICKEL PL. 100 MIN. THICK OVER COPPER STRIKE
 4. JEFLOW MIL-P-19468

NO.	DESCRIPTION	MATERIAL	FINISH	QTY
1	BODY	NOTE 1	NOTE 2	1
2	INSULATOR	NOTE 4	NATURAL	1
3	CONTACT PIN	NOTE 1	NOTE 3	1

DIMENSIONS ARE IN MILLIMETERS	
UNLESS OTHERWISE SPECIFIED TOLERANCES	
0.5- ϕ	\pm 0.2
6-3C	\pm 0.4
3C-12C	\pm 0.6
12C-315	\pm 1
315-1000	\pm 1.6
1000-2000	\pm 2.4
SCALE	6/1
ISSUE	A