

SLIDE SWITCH FOR P.C.B. ESP-SPDT SERIES



EXP10XX



EXP20XX



EXP30XX



EXP40XX

■ FEATURES

- The distance of 2 adjacent pins or stacked devices is 2.54 mm pitch
- All plastics are UL 94V-O grade fire retardant
- Low contact resistance and long mechanical life, suitable for signal switching and communication equipments.

■ APPLICATIONS

- Measuring point changeover switches
- Service switch
- Controls for consumer devices

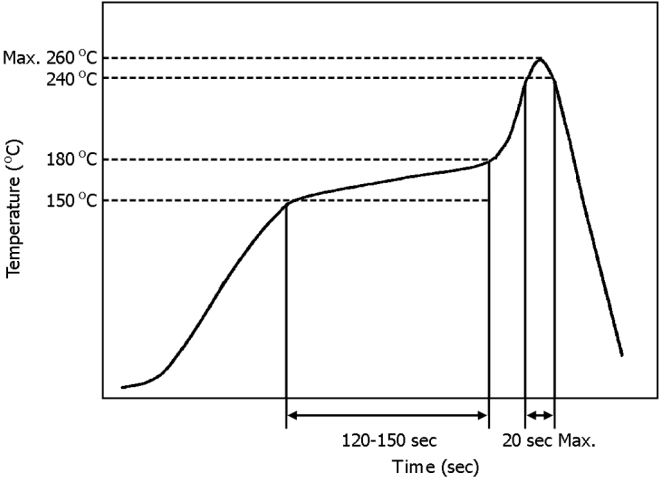
■ SPECIFICATIONS

◆ SPDT TYPE (ESP10,20,30,40 Series)

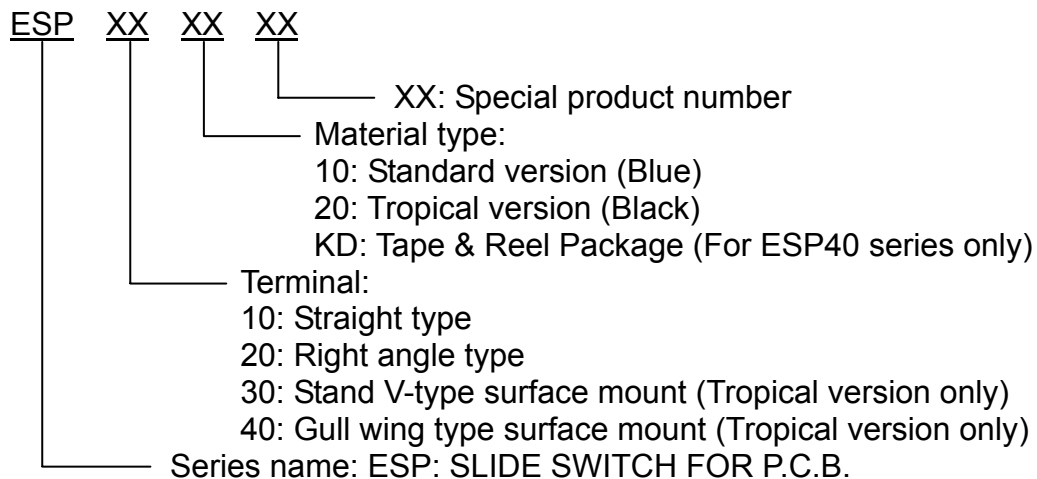
1. ELECTRICAL CHARACTERISTICS

| | |
|--------------------------|---------------------------|
| ● Contact rating | 0.2A, 24VDC; 0.5A, 12VDC |
| ● Minimum contact rating | 1mA, 10mV |
| ● Contact resistance | 30mΩ Max. |
| ● Dielectric strength | 2mA, 500VDC for 60sec. |
| ● Capacitance | 1.5pF Max. |
| ● Insulation resistance | 10000MΩ Min. under 500VDC |
| ● Mechanical life | 10000 operations |

2. GENERAL CHARACTERISTICS

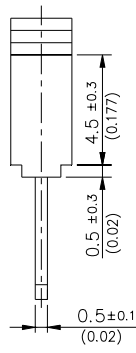
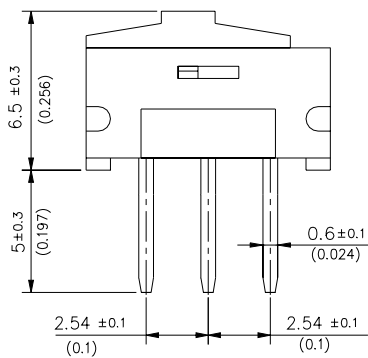
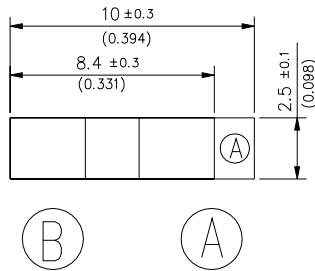
| | | |
|--|---|---------------|
| ● Temperature range | operating | -25°C ~ +70°C |
| | storage | -40°C ~ +85°C |
| ● Solder temperature | 230°C for 3 sec. | |
| ● Vibration | normal operation at 10Hz to 60Hz, 1.5mm movement | |
| ● Salt spray | 35°C, 5% for 24hours | |
| ● Reflow soldering heat for SMT type (reference) |  | |

■ PART NUMBERING SYSTEM

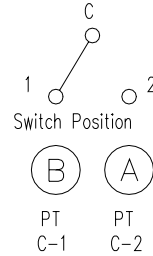


■ DIMENSIONS AND CIRCUITRY

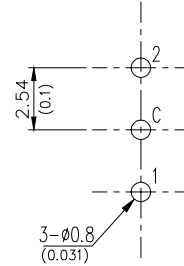
DIMENSIONS Unit: mm(inch)
P/N.: ESP10XX



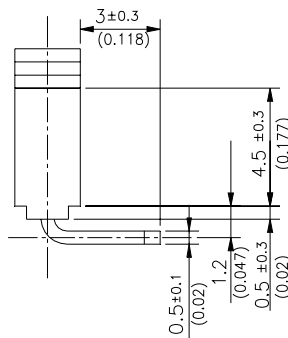
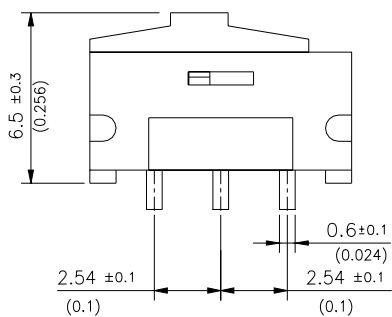
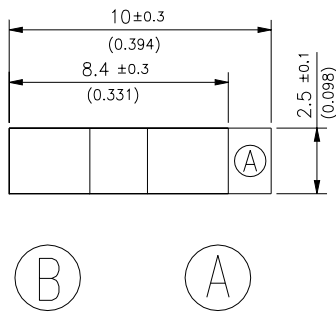
CIRCUIT DIAGRAM



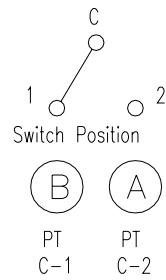
P.C.B. LAY OUT



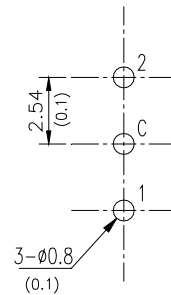
DIMENSIONS Unit: mm(inch)
P/N.: ESP20XX



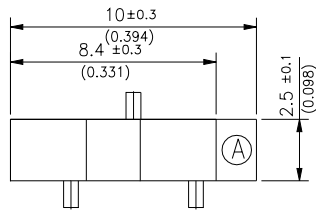
CIRCUIT DIAGRAM



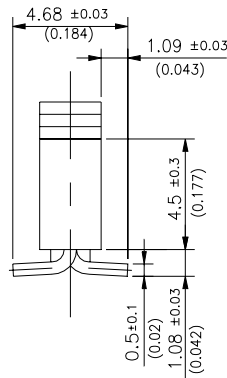
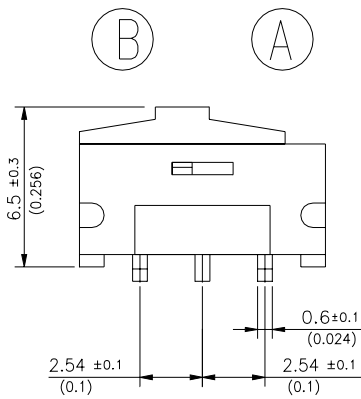
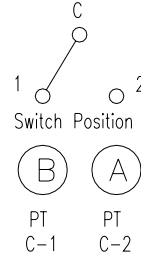
P.C.B. LAY OUT



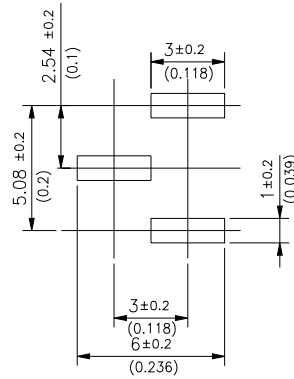
DIMENSIONS Unit: mm(inch)
P/N.: ESP30XX



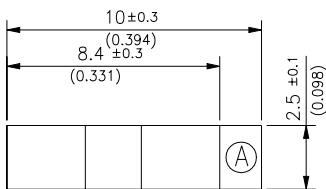
CIRCUIT DIAGRAM



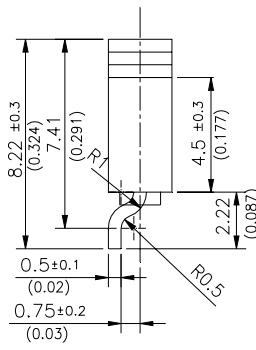
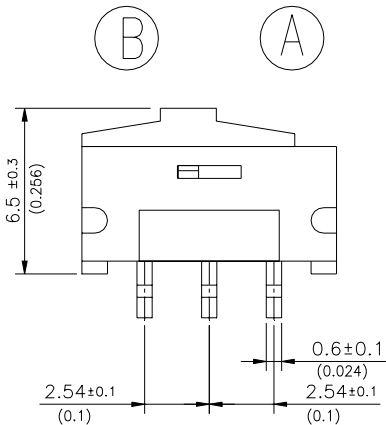
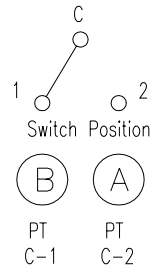
P.C.B. LAY OUT



DIMENSIONS Unit: mm(inch)
P/N.: ESP40XX



CIRCUIT DIAGRAM



P.C.B. LAY OUT

