

Connettori femmina a carrello


Female connectors rising clamp





Connecteurs femelle étrier remontant

Buchsensteckblock Liftprinzip

B1

Passo Pas	Pitch Rastermaß	mm
Tensione nominale Tension nominale	Rated Voltage Bemessungsspannung	V
Corrente nominale Intensité nominale	Rated Current Bemessungsstrom	A

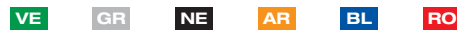
Tipo cavi Type du conducteur	Types of cables Leitungstypen	
Sezione nominale Section nominale	Nominal cross section Nennquerschnitt	mm² AWG
Lunghezza spelatura Longueur de dénudage	Stripping length Abisolierlänge	mm
Coppia di torsione Couple de serrage	Torque Drehmoment	Nm Lb-in
Temperatura Température	Temperature Temperatur	°C
Corpo isolante Corps isolant	Housing Isolierkörper	
Vite imperdibile Vis imperdable	Captive screw Unverlierbare Schraube	
		mm

	IMQ	EN60998
	VDE	EN61984
	UL	UL1059
	cUL	UL1059 + C22.2 n°158

Poli Pôles	Poles Polzahl	X →
Colore standard Coloris standard	Standard colour Standardfarbe	Y →
Altri dati Autres données	Other information Weitere Informationen	pag. Seite

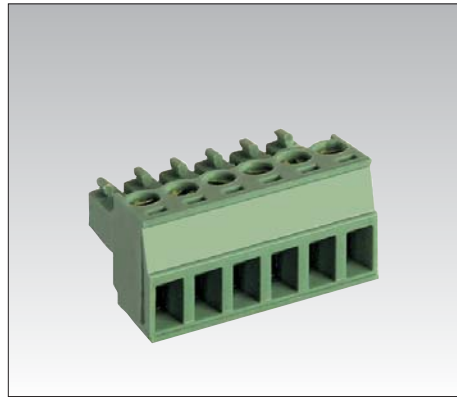
Ordinazione Référence de commande		How to order Bestellschlüssel			
MRT8	P3,5 / X	...	Y	...	
Tipo Type	Passo Pitch	Poli Poles	Versione Version	Colori Couleurs	Numerazione Marquage
Type	Pas	Pôles	Version	Farben	Bedruckung
Typ	Rastermaß	Polzahl	Version	Farben	Bedruckung

Altri colori a richiesta. Other colours on demand.
Autres couleurs sur demande. Andere Farben bei Bedarf.





MRT8

Blocco unico Monobloc	Single block Einzelblock	
Poli Pôles	Poles Polzahl	2/20

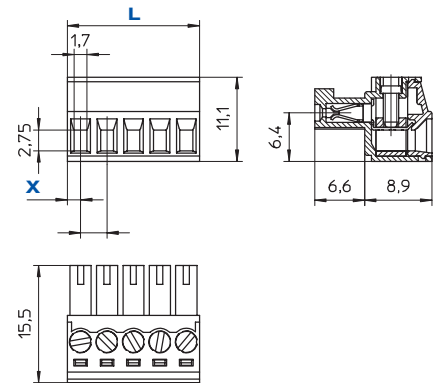


3,5	3,81
200	
10	

		
0,2 ÷ 1,0 30 ÷ 16	0,2 ÷ 1,0 30 ÷ 16	0,2 ÷ 1,0 30 ÷ 16
5		
0,3	2,5	
110		
PA - UL 94 V0		
M2		
	0,5 x 3	

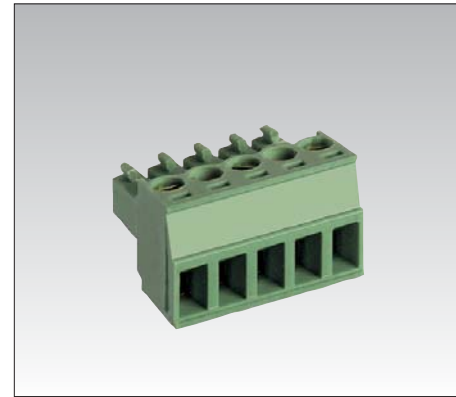
V	A	mm²/AWG
130	10	0,2 ÷ 1,0
300	8	30 ÷ 16

min 2 - max 20		
VE		
80		



Versione Version	...	
		
P	L (mm)	X
3,5	3,5 x p	1,75
3,81	(3,81 x p)+0,79	2,3

MRT8

Blocco unico Monobloc	Single block Einzelblock	
Poli Pôles	Poles Polzahl	2/10

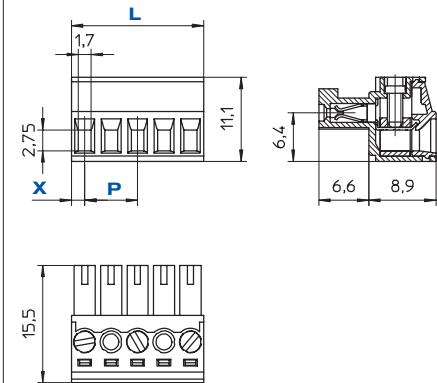


7	7,62
400	500
10	

		
0,2 ÷ 1,0 30 ÷ 16	0,2 ÷ 1,0 30 ÷ 16	0,2 ÷ 1,0 30 ÷ 16
5		
0,3	2,5	
110		
PA - UL 94 V0		
M2		
	0,5 x 3	

V	A	mm²/AWG
450	10	0,2 ÷ 1,0
300	8	30 ÷ 16

min 2 - max 10		
VE		
80		

Versione Version	...	
		
P	L (mm)	X
7	(7 x p)-3,5	1,75
7,62	(7,62 x p)-3,02	2,3