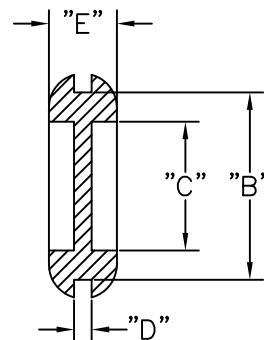
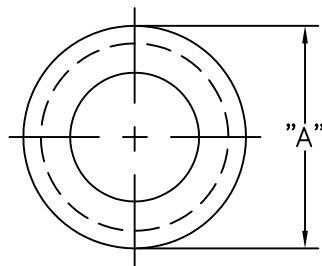


PART NO.	"A"	PANEL HOLE DIA. "B"	"C" REF.	PANEL THICKNESS "D"	"E"
DG-19426	.75 (19.0)	.63 (16.0)	.43 (11.0)	.06 (1.5)	.23 (5.8)
DG-19427	.87 (22.0)		.49 (12.5)	.09 (2.4)	.32 (8.0)
DG-19428	1.00 (25.5)	.75 (19.0)	.61 (15.5)	.06 (1.5)	.32 (8.0)
DG-15512			.63 (15.9)	.08 (2.0)	.31 (7.9)
DG-10134			.61 (15.5)	.09 (2.4)	.35 (8.8)
DG-19429			.12 (3.0)	.37 (9.5)	
DG-10187			.06 (1.5)	.32 (8.0)	
DG-10806	1.44 (36.5)	1.00 (25.5)	.75 (19.0)	.09 (2.4)	.33 (8.4)
DG-19430	1.50 (38.0)	1.26 (32.0)	1.00 (25.5)	.16 (4.0)	.32 (8.0)
DG-19431					.37 (9.5)
DG-19442					1.93 (49.0)



NOTES:

1. MATERIAL: PVC FLEXIBLE, (RMS-25).
2. COLOR: BLACK.

B	REMOVED TOP VIEW AND SECTION LINE	SM 01.02.02
A	4 DIM. "C" REVISED FROM 14.0 TO 15.5 MM	SM 12.06.01
REV	DESCRIPTION	ENGR DATE

TITLE: DIAPHRAGM GROMMETS		DWG IN IN (MM) FINAL			
TOLERANCES UNLESS NOTED .XX=±.010 .XXX=±.005 FRAC=±1/64 ANG=±1°	FILE # DG SERIES	DWN: S.M.	APP:	PART #	
	MAT'L: SEE NOTES	DT: 08/31/01	DT:	PRINT TYPE	
	RE: RICHCO, INC.	RICHCO INC. PO BOX 804238, CHICAGO, 60680 (773) 539-4060		SEE TABLE CA	