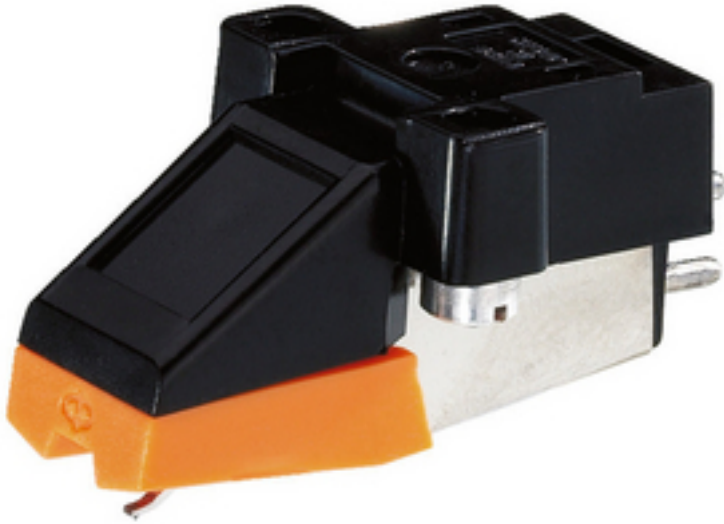


EN-24 - Magnetic Cartridge



Stereo magnetic phono cartridge system, (moving magnet).

- Diamond stylus and 1.3 cm (1/2") fixing
- Matching turntables of our programme (DJP-...) and as a replacement for other hi-fi turntables
- Stylus pressure: approx. 1.5 g

Technical data:

Frequency range	: 20-20,000 Hz
Output voltage	: 5 mV/1 kHz, 5 cm/s
Terminal impedance	: 47 kOhm/200 pF
Impedance	: 1.2 kOhm
DC resistance	: 300 Ohm
Channel balance	: < 2.5 dB/1 kHz
Channel separation	: ? 24 dB/1 kHz
Dyn. compliance	: 5 μ m/mN
Recom. stylus pressure	: 3 g (2.5-3.5 g)
Stylus tip	: conical 0.6 μ m
Weight	: 4.5 g