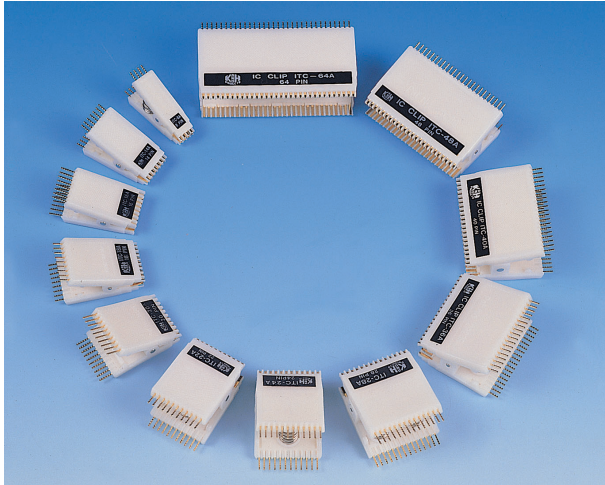
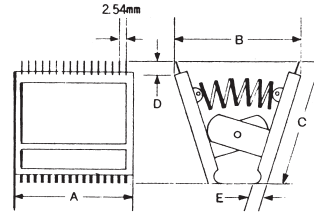




# IC TEST CLIPS



- Easier, faster, hand-free testing.
- Easy attachment on high density PC boards
- Lead channel makes probe steady without sliding off.
- With gold-plated pin for best contact.
- Compatible with connector
- Simplifying prototyping, production test, field service work and quality control inspection.



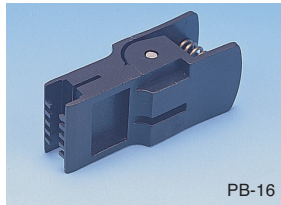
## IC TOOL



ICP-20

### ICP-20 IC PULLER

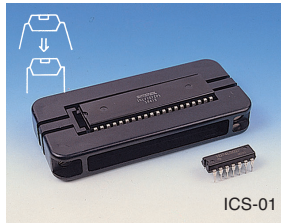
- Ideally for hobbyist.
- Anti-Static.
- Suitable for IC from 8~20 pin
- Weight: 25 g



PB-16

### PB-16 DIP IC EXTRACTOR

- It is specially used for solderless breadboard.
- Weight: 10 g



ICS-01

### ICS-01 IC STRAIGHTENER

- Ideally for breadboard
- Anti-Static
- Suitable for IC from 8 pin ~ 20 pin and 24 ~ 48pin
- Weight: 25 g



GX-8

### GX-8 PLCC EXTRACTOR

- Suitable for 18pin - 124pin PLCC using
- Weight: 22 g

| MODEL   | (INCH)<br>ROW TO ROW<br>DIMENSIONS | NUMBER<br>OF PIN | SPECIFICATION (mm) |        |      |     |     | WEIGHT<br>(g) |
|---------|------------------------------------|------------------|--------------------|--------|------|-----|-----|---------------|
|         |                                    |                  | A                  | B(MAX) | C    | D   | E   |               |
| ITC-8A  | 0.3"                               | 8                | 13                 | 27     | 44.5 | 6   | 5.5 | 20            |
| ITC-14A | 0.3"                               | 14               | 20.5               | 25     | 44.5 | 6   | 5.5 | 25            |
| ITC-16A | 0.3"                               | 16               | 23                 | 23     | 44.5 | 8   | 5   | 25            |
| ITC-18A | 0.3"                               | 18               | 25.5               | 26     | 44.5 | 6   | 5.5 | 30            |
| ITC-20A | 0.3"                               | 20               | 28                 | 25     | 44.5 | 8   | 5   | 30            |
| ITC-22A | 0.6"                               | 22               | 30.5               | 27     | 44.5 | 6   | 5.5 | 35            |
| ITC-24A | 0.6"                               | 24               | 32                 | 30     | 44.5 | 7   | 5   | 35            |
| ITC-28A | 0.6"                               | 28               | 37                 | 29     | 44.5 | 7   | 5.5 | 40            |
| ITC-36A | 0.6"                               | 36               | 48                 | 29     | 44.5 | 6   | 5.5 | 55            |
| ITC-40A | 0.6"                               | 40               | 52.5               | 29     | 44.5 | 6.5 | 5.5 | 55            |
| ITC-48A | 0.6"                               | 48               | 63                 | 29     | 44.5 | 6   | 5.5 | 70            |
| ITC-64A | 0.9"                               | 64               | 83                 | 33     | 44.5 | 6   | 5.5 | 105           |