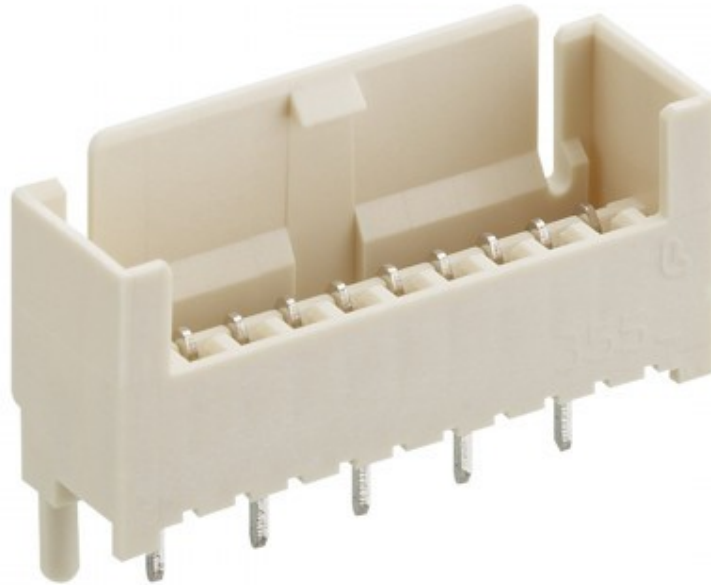
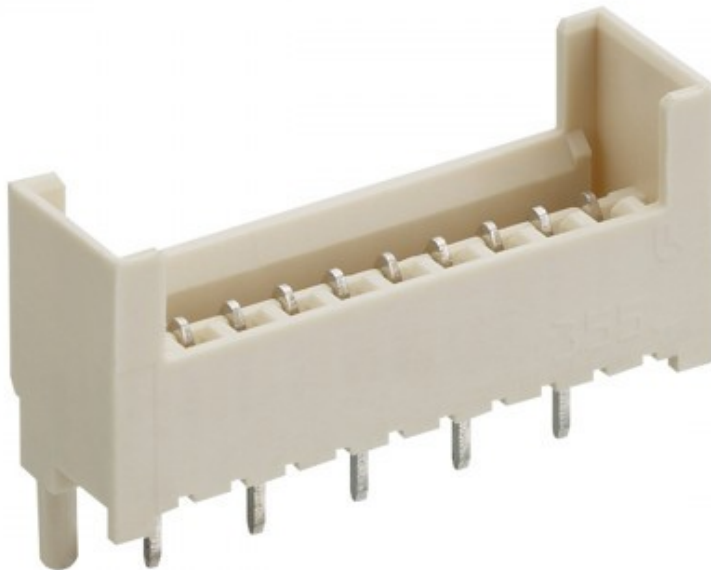


3550 / 3552 (not illustrated)

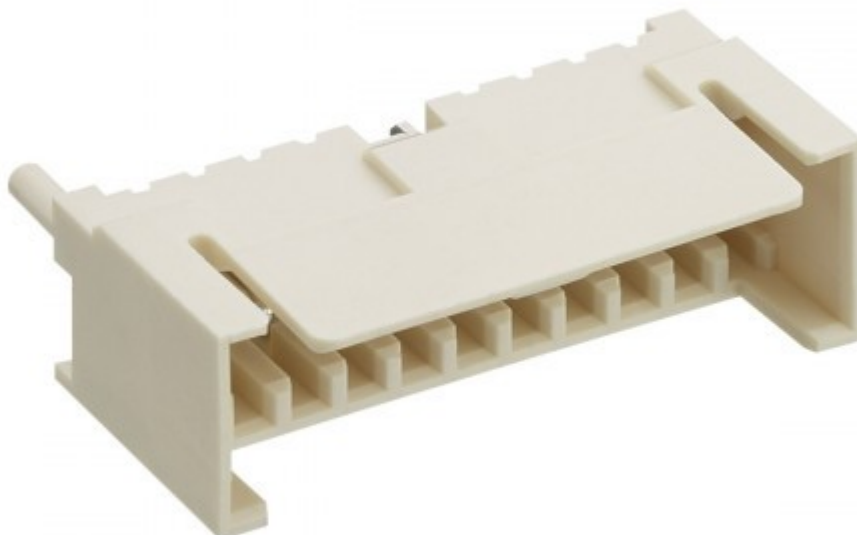


3551 / 3553 (not illustrated)

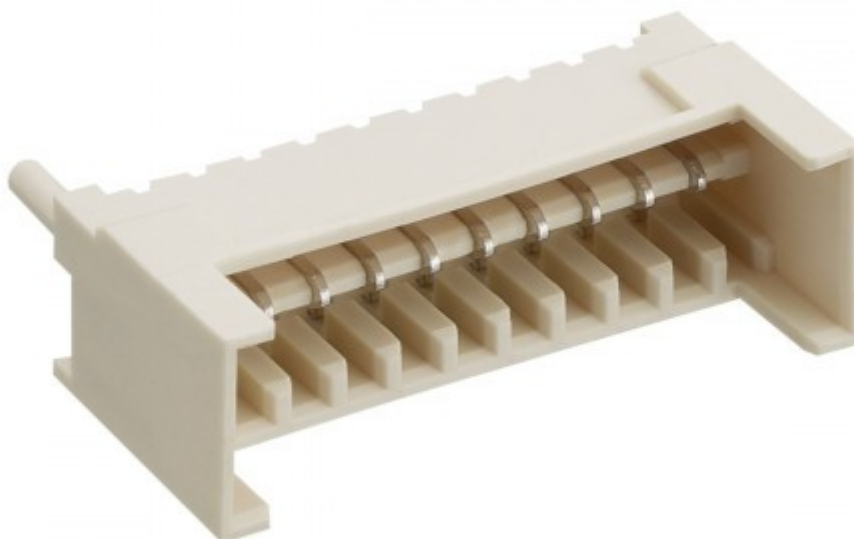


	Date	Name	Edition	1	2	3	4	5	6
Author	15.01.13	sve	Name	fs					
Checked	09.07.21	ritsch	Date	30.06.21					

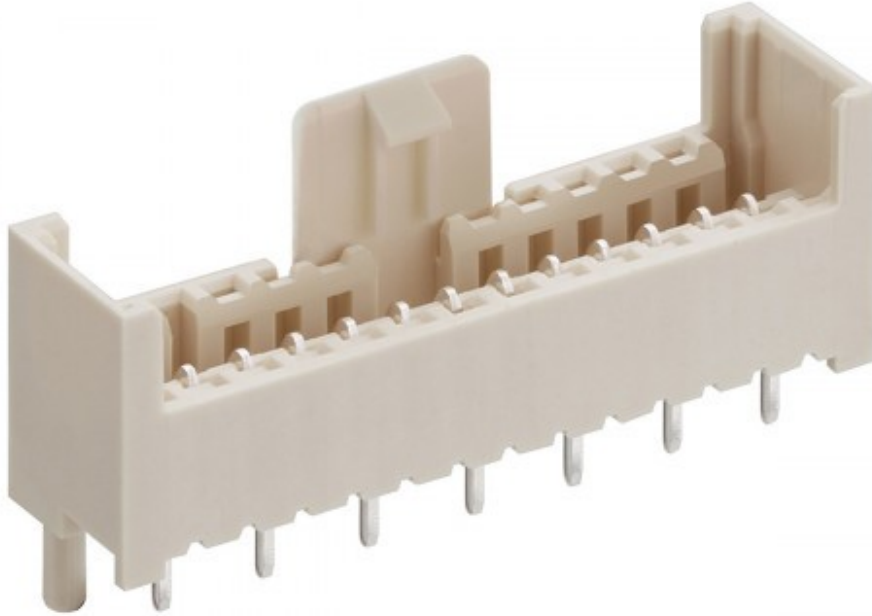
3554 / 3556 (not illustrated)



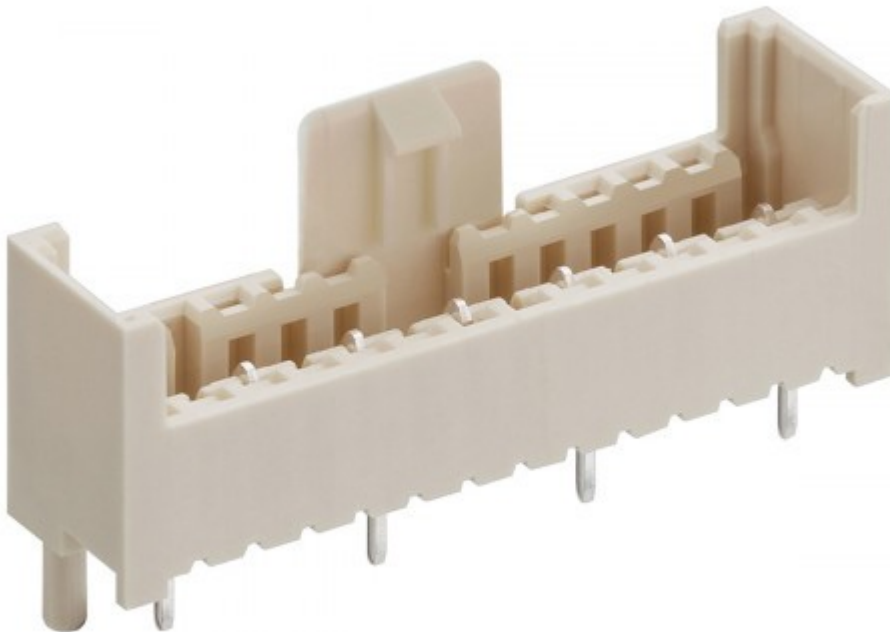
3555 / 3557 (not illustrated)



355099



355299



Contents

1. Product description.....	6
1.1. Product types.....	6
Pin header 3550.....	6
Pin header 3552.....	6
Pin header 3551.....	7
Pin header 3553.....	7
Pin header 3554.....	8
Pin header 3556.....	8
Pin header 3555.....	9
Pin header 3557.....	9
Pin header 355099.....	10
Pin header 355299.....	10
2. System features.....	11
3. Principle of contact.....	13
4. Coding.....	14
4.1. Coding according to RAST 2.5.....	14
4.2. Double-side coding.....	14
5. Processing.....	15
5.1. Soldering profile.....	15
5.2. Delivery.....	15
5.3. Hold-down plate.....	15
5.4. Clinching.....	15
5.5. Housing.....	15
6. Quality assurance measures.....	16
6.1. Quality characteristics.....	16
6.2. Press-in depth of contacts.....	16
6.3. Holding force of the contact pin in the contact carrier.....	16
7. Storage.....	17

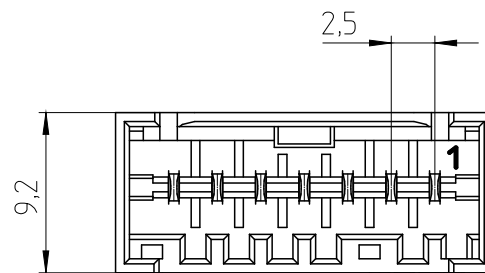
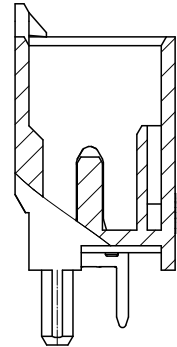
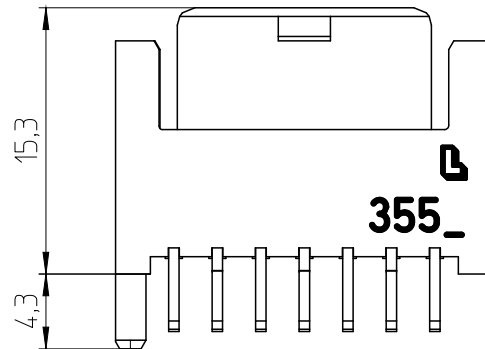
1. Product description

1.1. Product types

Pin header according to RAST 2.5 – Standard

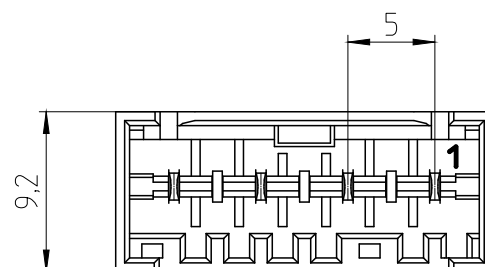
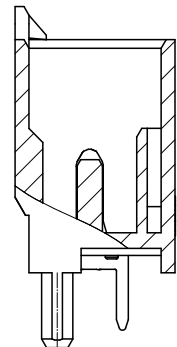
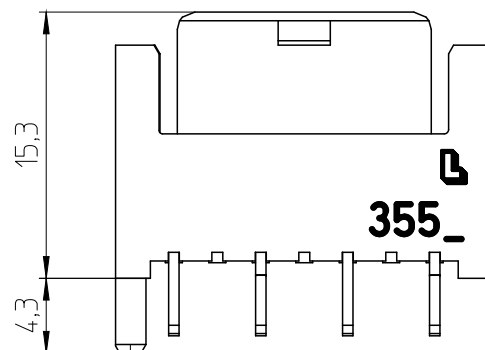
Pin header 3550

Pitch 2,5 mm
acc. to data sheet 3550 01



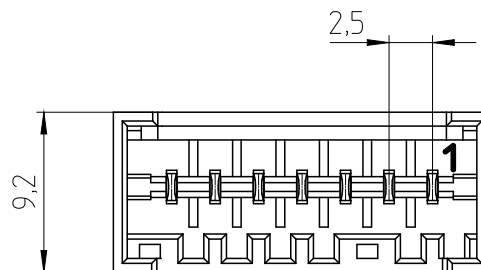
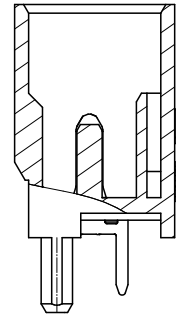
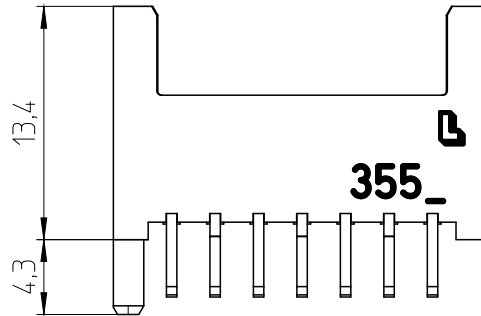
Pin header 3552

Pitch 5,0 mm
acc. to data sheet 3552 01



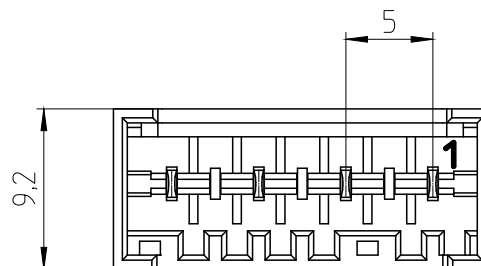
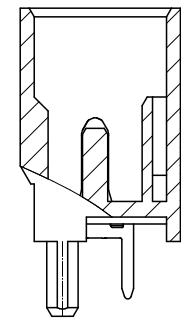
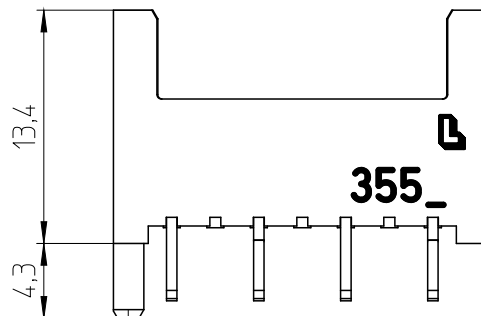
Pin header 3551

Pitch 2,5 mm
acc. to data sheet 3551 01



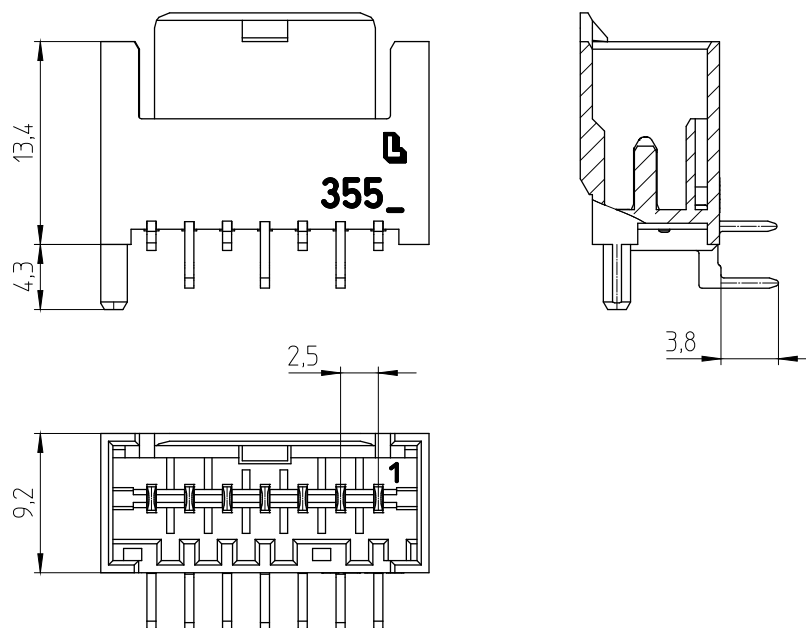
Pin header 3553

Pitch 5,0 mm
acc. to data sheet 3553 01



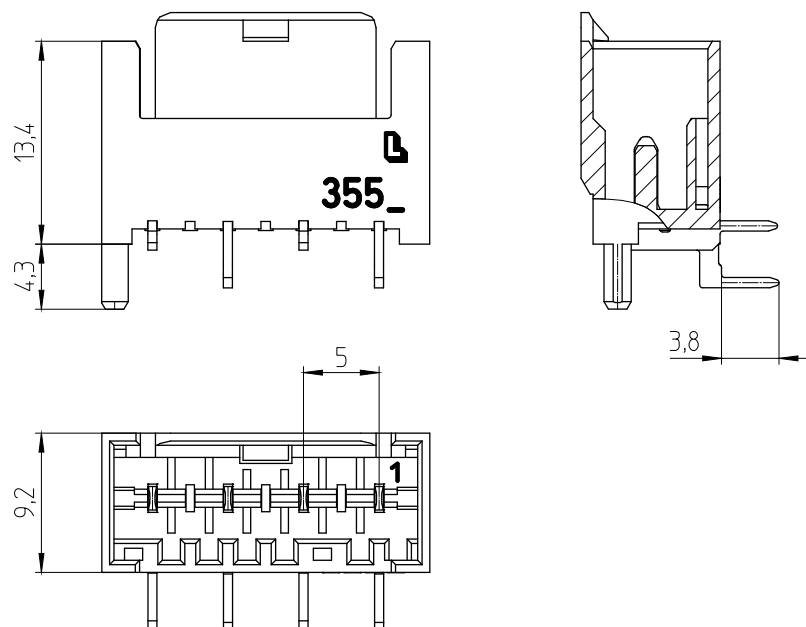
Pin header 3554

Pitch 2,5 mm
acc. to data sheet 3554 01



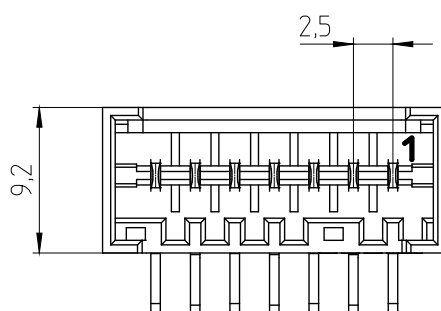
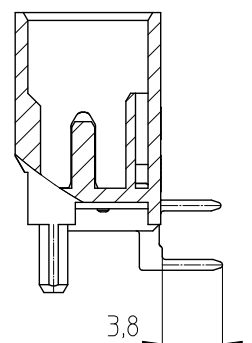
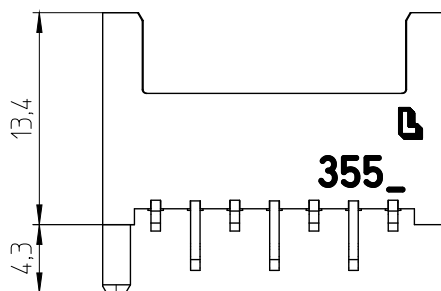
Pin header 3556

Pitch 5,0 mm
acc. to data sheet 3556 01



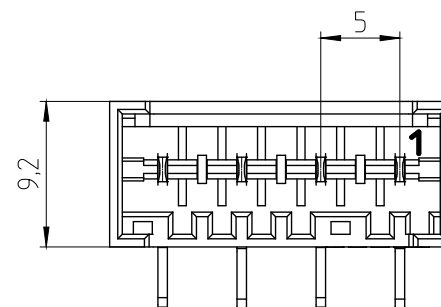
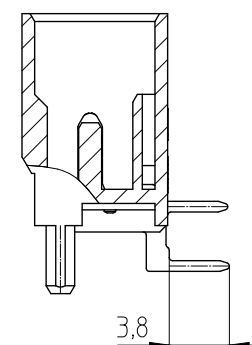
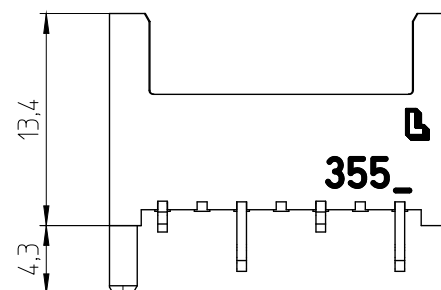
Pin header 3555

Pitch 2,5 mm
acc. to data sheet 3555 01



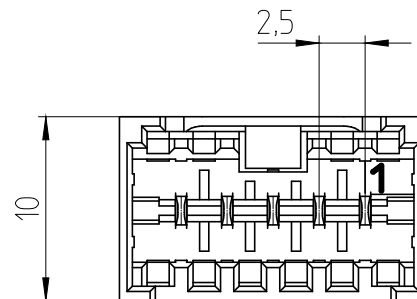
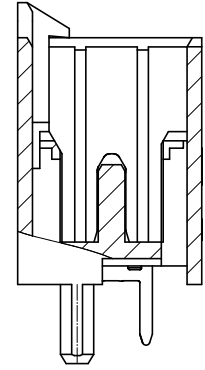
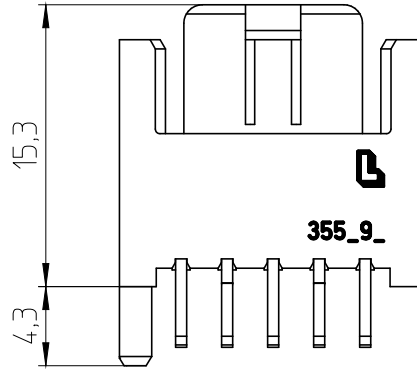
Pin header 3557

Pitch 5,0 mm
acc. to data sheet 3557 01



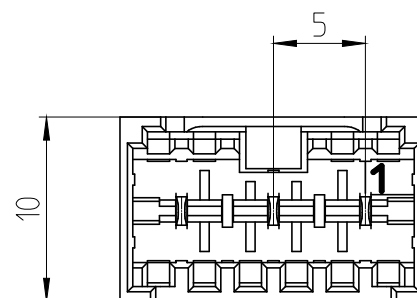
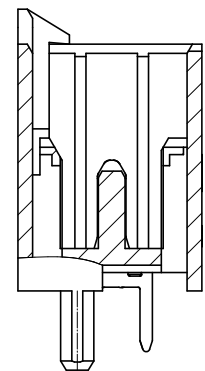
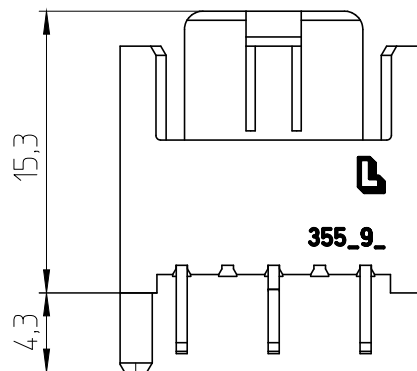
Pin header 355099

Pitch 2,5 mm
acc. to data sheet 355099 01
double-side coding

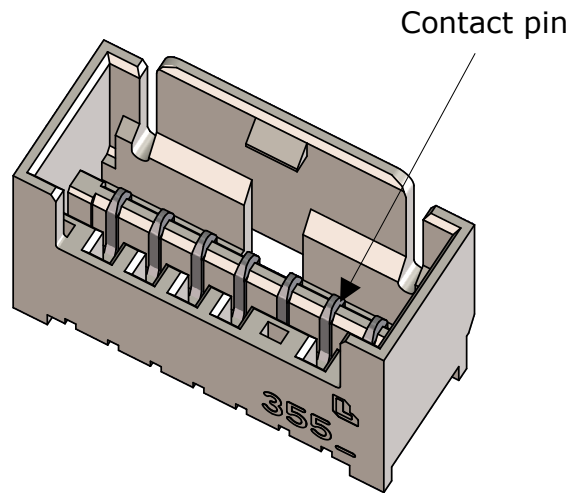


Pin header 355299

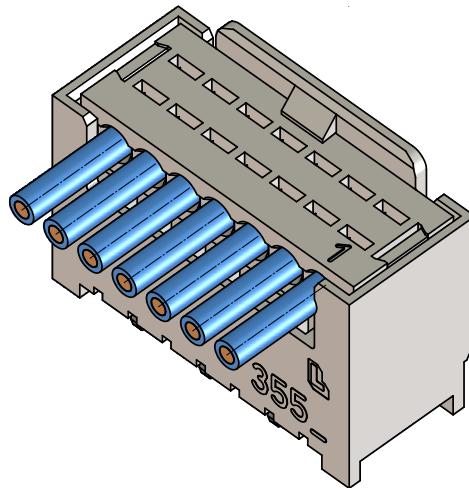
Pitch 5,0 mm
acc. to data sheet 355299 01
double-side coding



2. System features

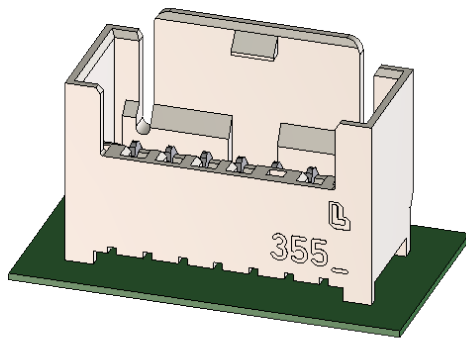
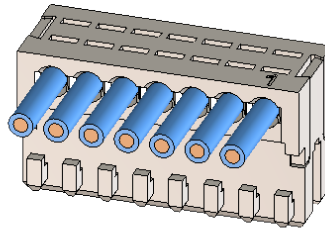


RAST 2.5 – plug inserted in pin header

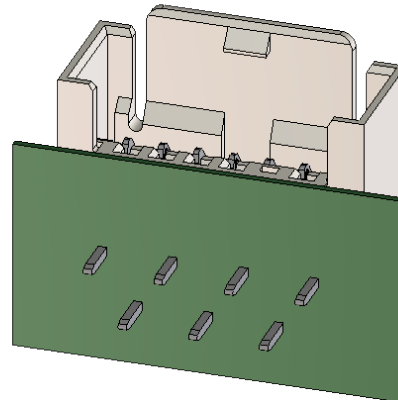


The plugs are used together with pin headers as indirect connectors or with guide frames as direct connectors (edge plugs).

Plug, according to RAST 2.5

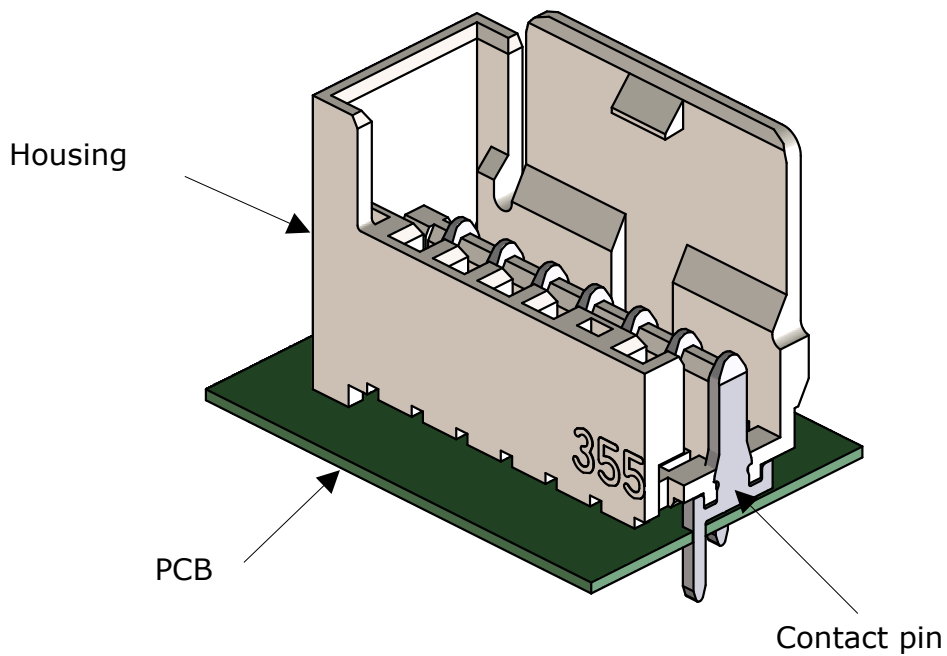


Type 3550



Type 3554

3. Principle of contact

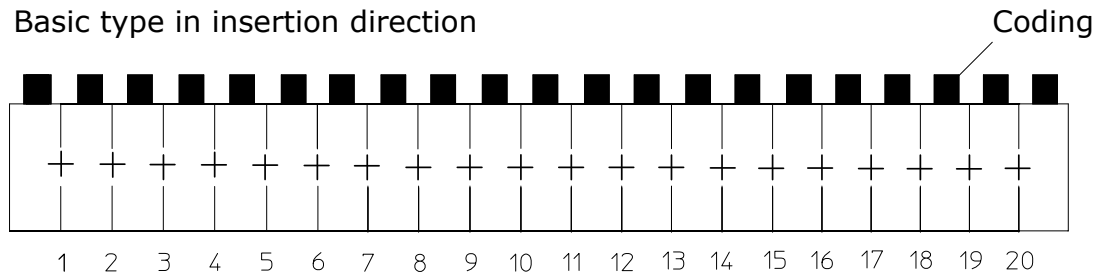


4. Coding

The coding is implemented according to the RAST 2.5 Standard.

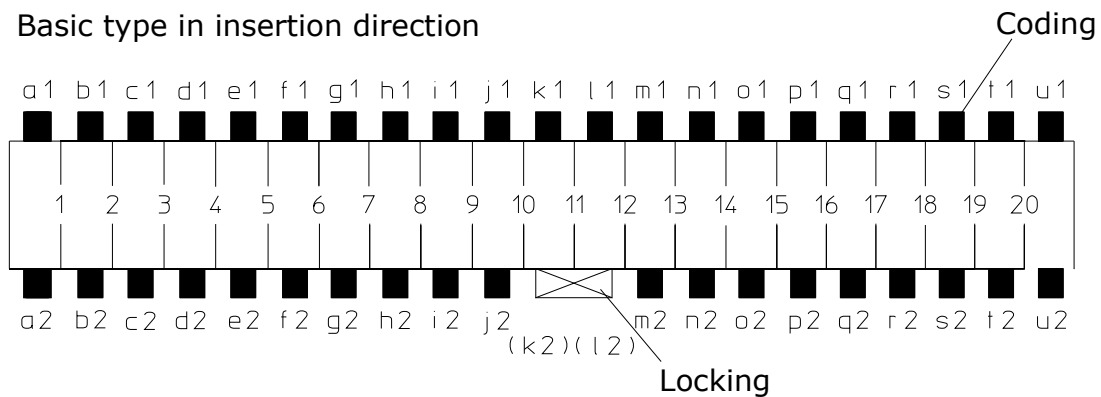
4.1. Coding according to RAST 2.5

Basic type in insertion direction



4.2. Double-side coding

Basic type in insertion direction



5. Processing

The pole count, pin-out assignment and PCB layout (see technical data sheet) must all match.

5.1. Soldering profile

The soldering profiles are available on our website at www.lumberg.com/main/download/special/Loetprofile_DE_EN.pdf.

5.2. Delivery

The pin headers are delivered in bulk packaging or, optionally, in loading tubes.

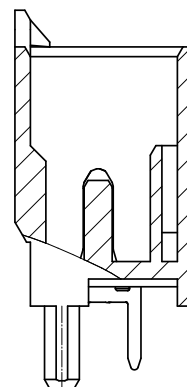
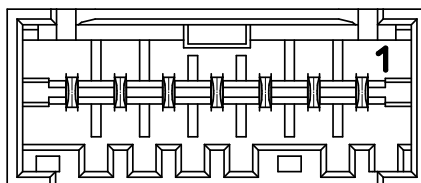
5.3. Hold-down plate

We recommend using a hold-down plate with the components so that they do not rise up. When using lubricants, no residues (impurities) may be left on the pin headers (especially not on the contact pins).

5.4. Clinching

We recommend in principle not to clinch our contacts. If, in case of disregard, clinching is executed it is at the processing organization's responsibility to ensure correct function of the components.

5.5. Housing



The housing should not show any visible signs of damage following the assembly or soldering process (using a visual inspection).

The plug-in function must be confirmed (we recommend a test of function).

The contact blade must be correctly positioned in the housing (using a visual inspection, for example).

6. Quality assurance measures

All work and process steps or changes (for example, product introduction, cabling changes, tool or machine changes etc.) that can influence product quality must be in accordance with the requirements of the relevant testing authority for that work step. Implementation of such steps or measures must be done with due care and attention.

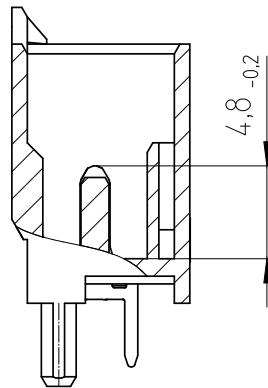
6.1. Quality characteristics

The following quality characteristics should be considered:

Lumberg will ensure that there is compliance with the RAST 2.5 directive.

6.2. Press-in depth of contacts

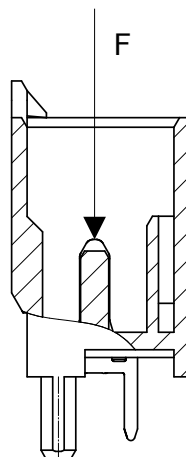
The insertion depth of the contacts is determined by the height of the contact carrier.



6.3. Holding force of the contact pin in the contact carrier

Minimum push-out force for the contact pin out of the contact carrier

$F > 20\text{N}$ / contact pin



7. Storage

Tin-plated and silver-plated surfaces can undergo a physical aging process that may negatively affect their ability to be soldered. In order to maintain the best connection characteristics, make sure that the following instructions are closely followed during additional processing steps:

Storage conditions:

The parts should ideally be stored in the original packaging, at a constant temperature of 21-25°C, with a relative humidity of no more than 55%. The components should not be exposed to direct light. They should also be protected from any extreme ambient conditions (such as air pollution).

The storage time should be kept as short as possible, especially for silver-plated components and for solder connections in general. Our experience is that tin-plated components can be soldered for about a year after delivery when using the proper conventional flux. Silver-plated components, owing to their physical characteristics, should be processed within about six months of delivery.

These specifications are based on experience using components stored under optimal conditions. They do not constitute a binding commitment for the fulfillment of any characteristics.

Ask Lumberg for more information about alternative packaging options for other temperatures and environmental conditions.