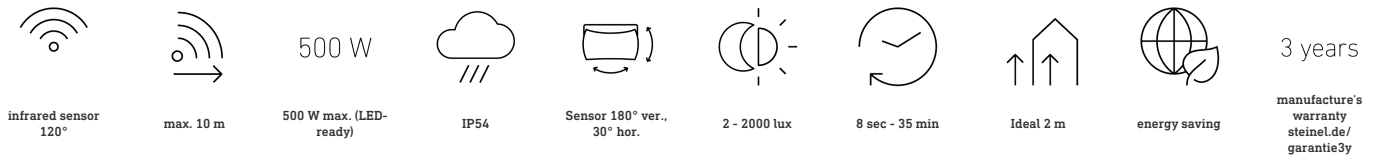
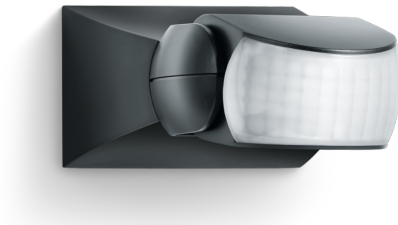


Motion detector

IS 1

black
EAN 4007841 600419
Article number 600419



Function description

Targeted detection and attractive price. Infrared motion detector IS 1, for indoors and out, ideal for targeted coverage of small areas, 120° angle of coverage, reach up to 10 m, selectable time and twilight threshold, sensor turns through 30° and tilts through 180° for exact adjustment of the detection zone.

Technical specifications

Dimensions (L x W x H)	120 x 80 x 50 mm	LED lamps < 2 W	16 W
Manufacturer's Warranty	3 years	LED lamps > 2 W < 8 W	64 W
Settings via	Potentiometers	LED lamps > 8 W	64 W
With remote control	No	Capacitive load in µF	88 µF
Version	black	Sensor Technology	Passive infrared
PU1, EAN	4007841600419	Mounting height	1,80 – 3,00 m
Type	Motion detectors	Mounting height max.	3,00 m
Application, place	Indoors, Outdoors	Optimum mounting height	2 m
Application, room	outdoors, front door, all round the building, terrace / balcony, courtyard & driveway	Detection angle	120 °
Colour	black	Angle of aperture	40 °
Colour, RAL	9005	Sneak-by guard	No
Includes corner wall mount	No	Capability of masking out individual segments	Yes
Installation site	wall, ceiling	Electronic scalability	No
Installation	Surface wiring, Wall, Ceiling	Mechanical scalability	No
IP-rating	IP54	Reach, radial	r = 3 m (9 m ²)
		Reach, tangential	r = 10 m (105 m ²)

<https://www.steinel.de>

Subject to technical modifications

12.2022 Page 1 from 3

Motion detector

IS 1

black
EAN 4007841 600419
Article number 600419



Technical specifications

Protection class	II
Ambient temperature	-20 – 50 °C
Material	Plastic
Mains power supply	230 – 240 V / 50 Hz
Switching output 1, resistive	500 W
Switching output 1, number of LEDs / fluorescent lamps	4 pcs.
Fluorescent lamps, electronic ballast	430 W
Fluorescent lamps, uncorrected	500 VA
Fluorescent lamps, series-corrected	500 VA
Fluorescent lamps, parallel-corrected	500 VA
Switching output 1, low-voltage halogen lamps	500 VA

Switching zones	260 switching zones
Twilight setting	2 – 2000 lx
Time setting	8 s – 35 Min.
Basic light level function	No
Main light adjustable	No
Twilight setting TEACH	No
Constant-lighting control	No
Interconnection	Yes
Type of interconnection	Master/master
Interconnection via	Cable

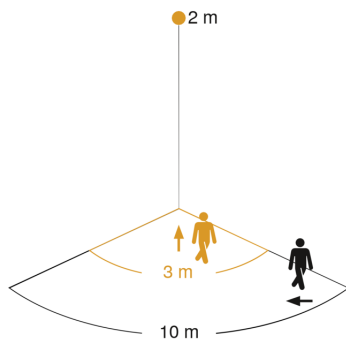
Motion detector

IS 1

black
EAN 4007841 600419
Article number 600419

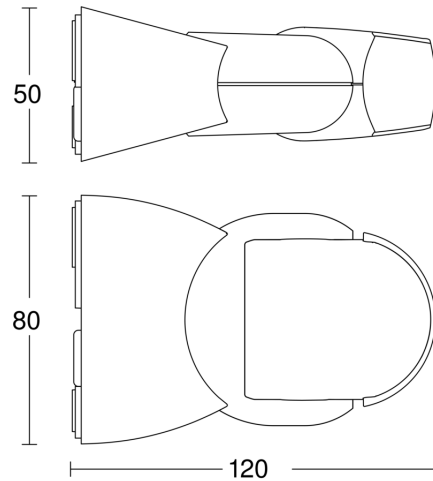


Detection Zone

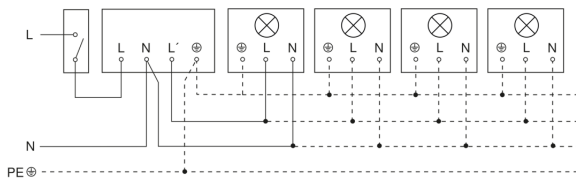


Mögliche Montagehöhe: 1,80 m – 3,00 m
Orange: radial
Schwarz: tangential

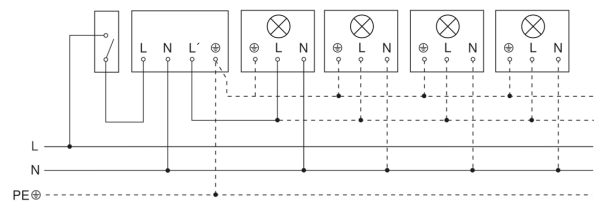
Dimension Drawing



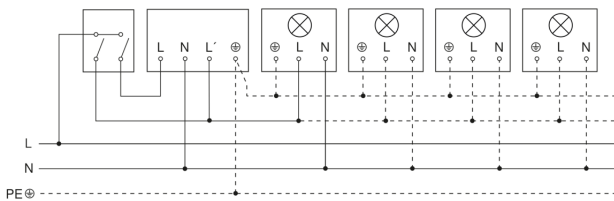
Light without neutral conductor



Light with neutral conductor



Connection using two-circuit switch for manual and automatic operation



Circuit diagram Connection via a changeover switch for continuous and automatic operation

